

WAAS CH 86935 W01A	APP CRS 009°	Rwy Idg TDZE 499 Apt Elev 499	5007
--	------------------------	---	-------------

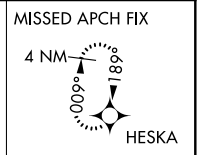
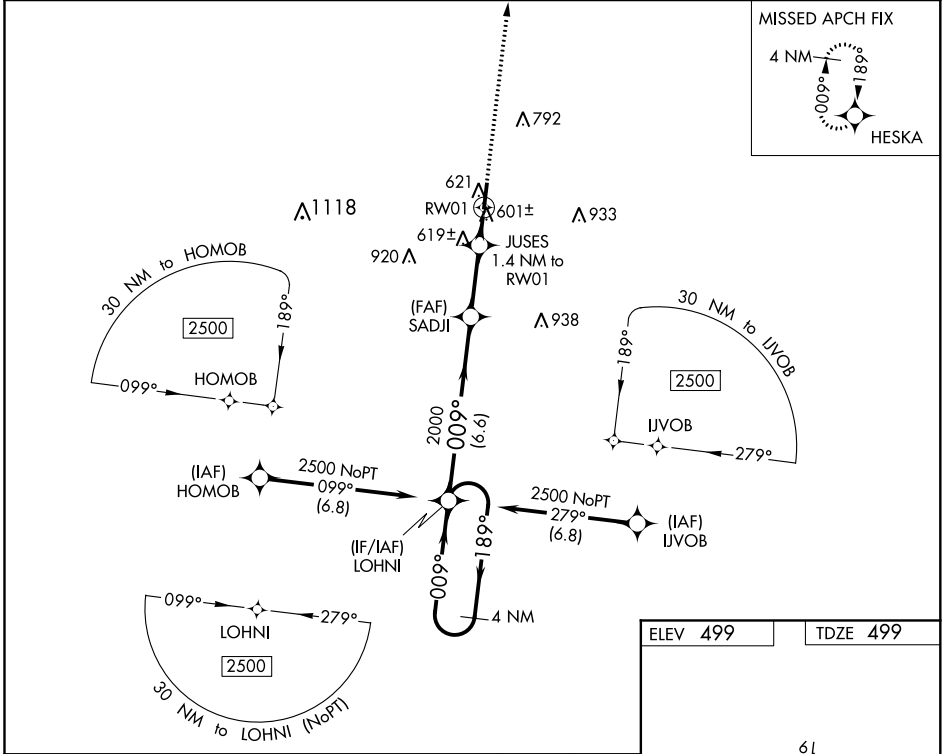
RNAV (GPS) RWY 1

WILLIAM L WHITEHURST FLD (M08)

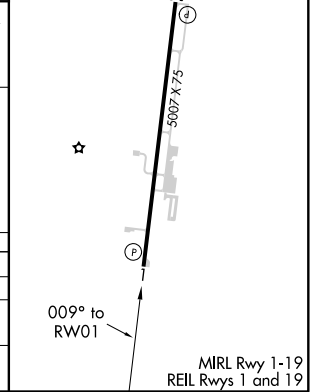
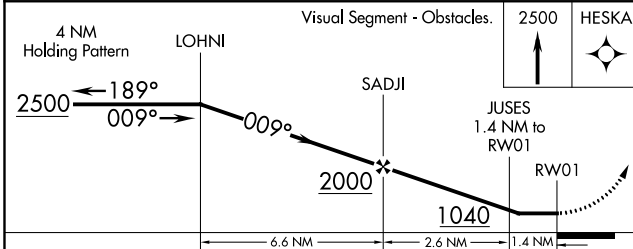
NA DME/DME RNP-0.3 NA. When local altimeter setting not received, use Jackson altimeter setting and increase all MDA 80 feet, increase LP Cats C/D visibilities $\frac{3}{8}$ mile, and LNAV Cats C/D and Circling Cats C/D visibilities $\frac{1}{4}$ mile. Rwy 1 helicopter visibility reduction below 1 SM NA.

MISSED APPROACH: Climb to 2500 direct HESKA and hold.

AWOS-3 121.125	MEMPHIS CENTER 124.35 239.3	UNICOM 123.0 (CTAF)
--------------------------	---------------------------------------	-------------------------------



ELEV 499	TDZE 499
----------	----------



CATEGORY	A	B	C	D
LP MDA	860-1 361 (400-1)			
LNAV MDA	880-1	381 (400-1)	880-1 $\frac{1}{8}$	381 (400-1 $\frac{1}{8}$)
C CIRCLING	980-1	481 (500-1)	1100-1 $\frac{3}{4}$ 601 (700-1 $\frac{3}{4}$)	1360-2 $\frac{3}{4}$ 861 (900-2 $\frac{3}{4}$)

SE-1, 17 JUN 2021 to 15 JUL 2021

SE-1, 17 JUN 2021 to 15 JUL 2021

MIRL Rwy 1-19
REIL Rwys 1 and 19

WAAS CH 63035 W19A	APP CRS 189°	Rwy Idg TDZE 497 Apt Elev 499	5007
--	------------------------	---	-------------

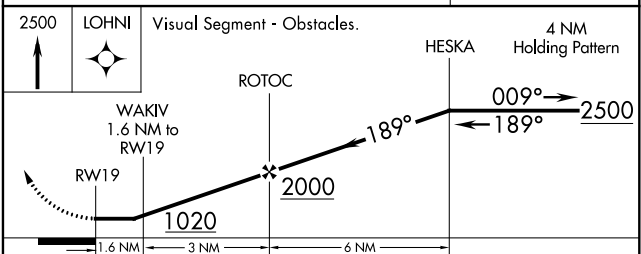
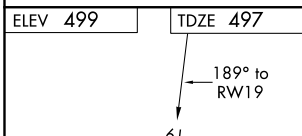
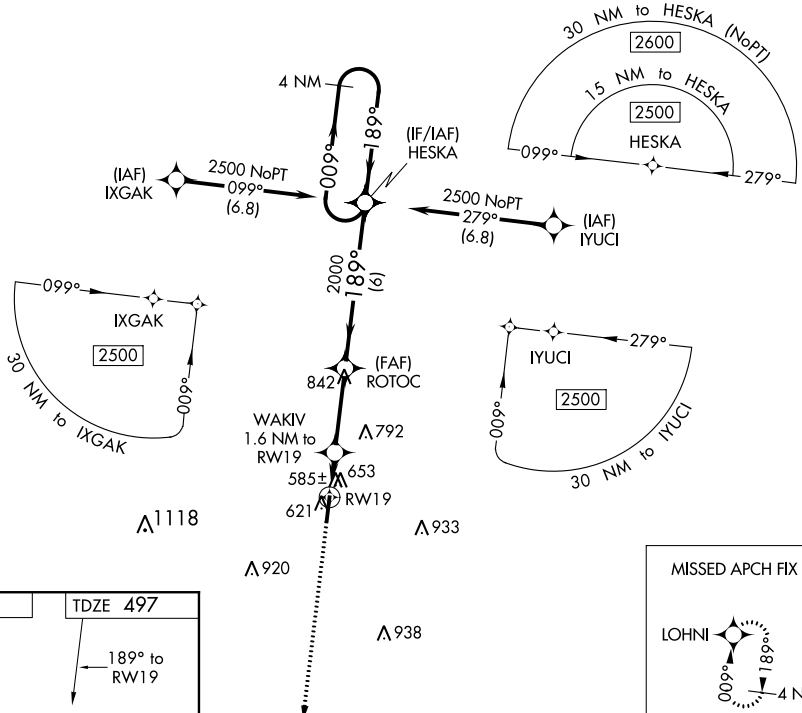
RNAV (GPS) RWY 19

WILLIAM L WHITEHURST FLD (M08)

NA DME/DME RNP-0.3 NA. When local altimeter setting not received, use Jackson altimeter setting and increase all MDA 80 feet, increase LP Cats C/D visibilities ¼ mile, increase LNAV Cats C/D visibilities ½ mile and Circling Cats C/D visibilities ¼ mile. Rwy 19 helicopter visibility reduction below ¾ SM NA. Rwy 1 helicopter visibility reduction below 1 SM NA.

MISSED APPROACH: Climb to 2500 direct LOHNI and hold.

AWOS-3 121.125	MEMPHIS CENTER 124.35 239.3	UNICOM 123.0 (CTAF)
--------------------------	---------------------------------------	-------------------------------



CATEGORY	A	B	C	D
LP MDA	840-1 343 (400-1)			
LNAV MDA	920-1	423 (500-1)	920-1¼	423 (500-1¼)
CIRCLING	980-1	481 (500-1)	1100-1¾ 601 (700-1¾)	1360-2¾ 861 (900-2¾)

SE-1, 17 JUN 2021 to 15 JUL 2021

SE-1, 17 JUN 2021 to 15 JUL 2021