

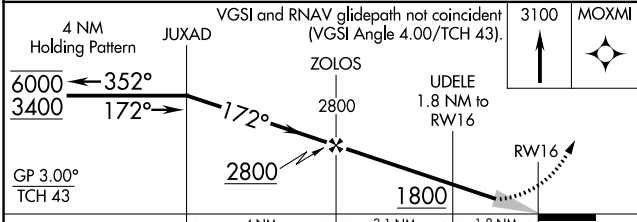
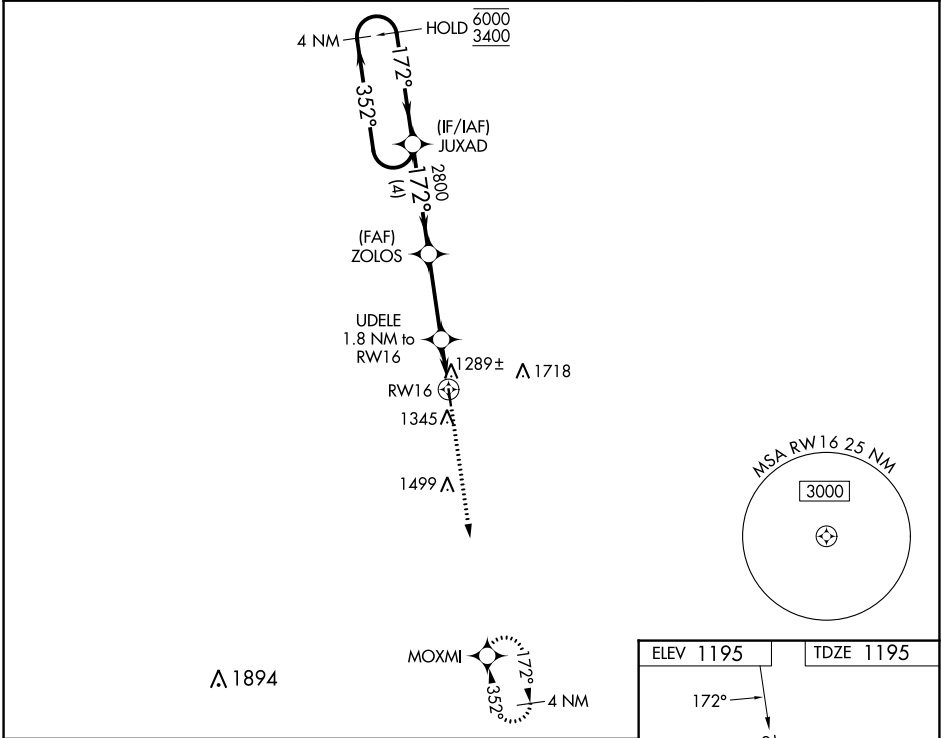
WAAS CH <b>97329</b> <b>W16A</b>	APP CRS <b>172°</b>	Rwy Idg <b>3500</b>
		TDZE <b>1195</b>
		Apt Elev <b>1195</b>

# RNAV (GPS) RWY 16

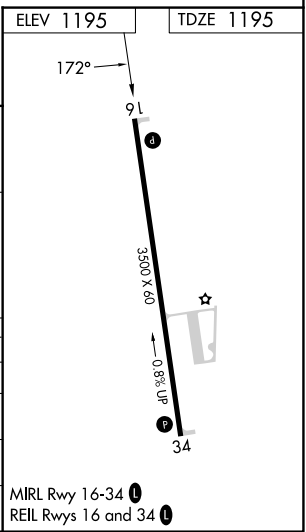
HOUSTON MEML (M48)

RNP APCH-GPS.	MISSED APPROACH: Climb to 3100 direct MOXMI and hold.
<p>▼ Baro-VNAV NA. Use Fort Leonard Wood altimeter setting, when not received use West Plains altimeter setting.</p> <p>▲ NA</p>	

TBN ASOS <b>118.7 229.4</b>	KANSAS CITY CENTER <b>128.35 284.675</b>	CTAF <b>122.90</b>
--------------------------------	---	-----------------------



CATEGORY	A	B	C	D
LPV DA	1513-1	318 (400-1)		NA
LNAV/VNAV DA	1513-1	318 (400-1)		NA
LNAV MDA	1620-1	425 (500-1)		NA
CIRCLING	1760-1 565 (600-1)	1880-1 685 (700-1)		NA



NC-3, 22 FEB 2024 to 21 MAR 2024

NC-3, 22 FEB 2024 to 21 MAR 2024

MIRL Rwy 16-34  
REIL Rws 16 and 34

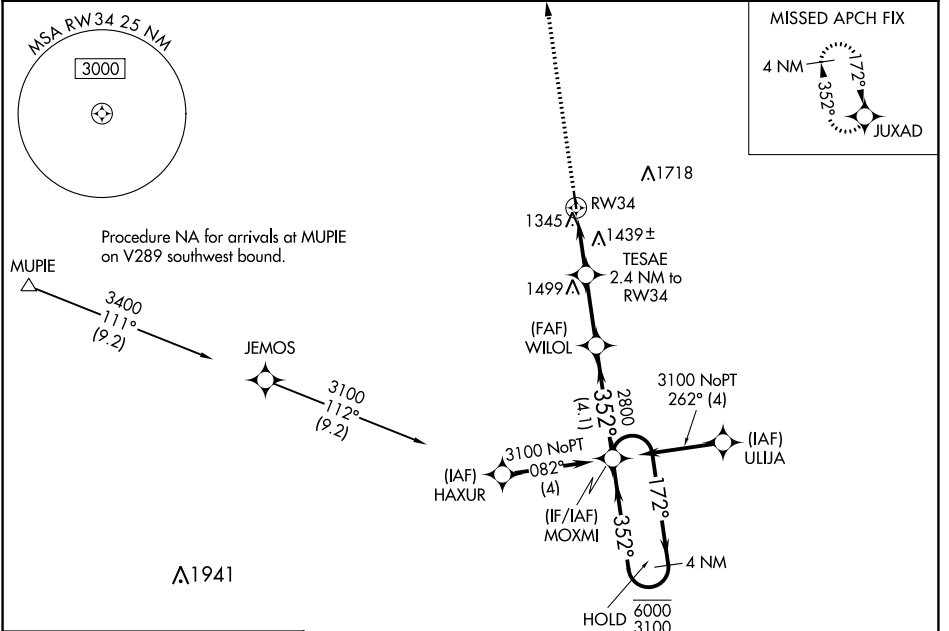
WAAS CH <b>72728</b> <b>W34A</b>	APP CRS <b>352°</b>	Rwy Idg TDZE Apt Elev	<b>3500</b> <b>1191</b> <b>1195</b>
--	------------------------	-----------------------------	---

# RNAV (GPS) RWY 34

HOUSTON MEML (M48)

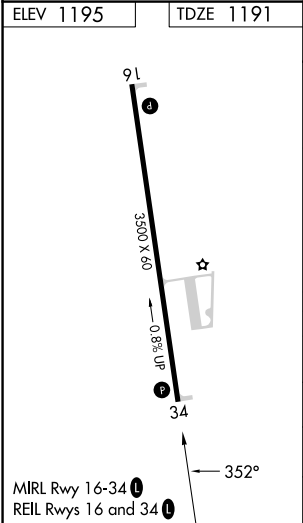
RNP APCH-GPS.	MISSED APPROACH: Climb to 3400 direct JUXAD and hold.
<p>Baro-VNAV NA. Use Fort Leonard Wood altimeter setting, when not received use West Plains altimeter setting.</p>	

TBN ASOS <b>118.7 229.4</b>	KANSAS CITY CENTER <b>128.35 284.675</b>	CTAF <b>122.9 0</b>
--------------------------------	---	------------------------



NC-3, 22 FEB 2024 to 21 MAR 2024

NC-3, 22 FEB 2024 to 21 MAR 2024



ELEV 1195	TDZE 1191	3400 JUXAD VGSF and RNAV glidepath not coincident (VGSF Angle 4.00/TCH 39).																		
		MOXMI 4 NM Holding Pattern																		
<table border="1"> <tr> <td>3400</td> <td>JUXAD</td> <td>2800</td> <td>MOXMI</td> </tr> <tr> <td>↑</td> <td>✧</td> <td>✧</td> <td>✧</td> </tr> </table>		3400	JUXAD	2800	MOXMI	↑	✧	✧	✧	<table border="1"> <tr> <td>TESAE 2.4 NM to RWY 34</td> <td>WILOL 2800</td> <td>MOXMI 4 NM Holding Pattern</td> </tr> <tr> <td>1980</td> <td>2800</td> <td>6000 / 3100</td> </tr> <tr> <td>2.4 NM</td> <td>2.6 NM</td> <td>4.1 NM</td> </tr> </table>		TESAE 2.4 NM to RWY 34	WILOL 2800	MOXMI 4 NM Holding Pattern	1980	2800	6000 / 3100	2.4 NM	2.6 NM	4.1 NM
3400	JUXAD	2800	MOXMI																	
↑	✧	✧	✧																	
TESAE 2.4 NM to RWY 34	WILOL 2800	MOXMI 4 NM Holding Pattern																		
1980	2800	6000 / 3100																		
2.4 NM	2.6 NM	4.1 NM																		
<table border="1"> <tr> <td>GP 3.00°</td> <td>TCH 40</td> </tr> </table>		GP 3.00°	TCH 40																	
GP 3.00°	TCH 40																			
CATEGORY	A	B	C																	
LPV DA	1509-1	318 (400-1)	NA																	
LNAV/VNAV DA	1740-1 5/8	549 (600-1 5/8)	NA																	
LNAV MDA	1740-1	549 (600-1)	NA																	
CIRCLING	1760-1	1880-1	NA																	
	565 (600-1)	685 (700-1)																		