

APP CRS	Rwy Idg	<b>3460</b>
<b>180°</b>	TDZE	<b>205</b>
	Apt Elev	<b>205</b>

# RNAV (GPS) RWY 18

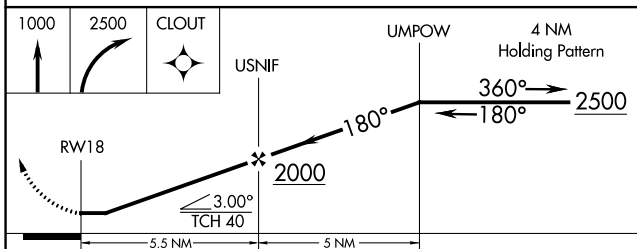
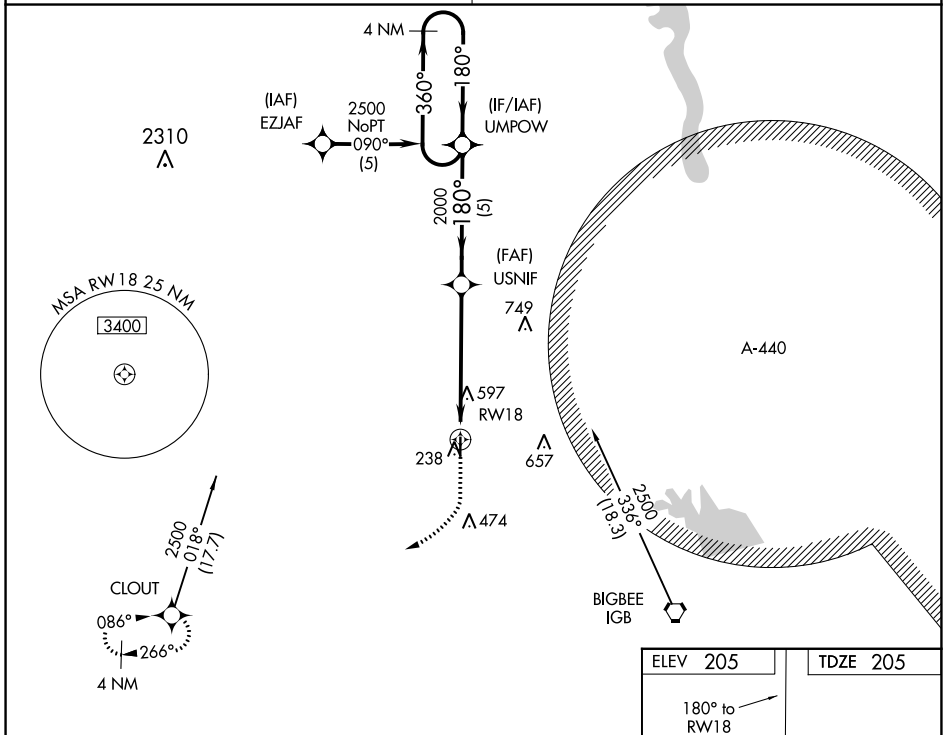
MCCHAREN FLD (M83)

**▽** Use Golden Triangle Rgnl altimeter setting, when not received, use Columbus AFB altimeter setting. DME/DME RNP-0.3 NA. Helicopter visibility reduction below 1 SM NA. Procedure NA at night.

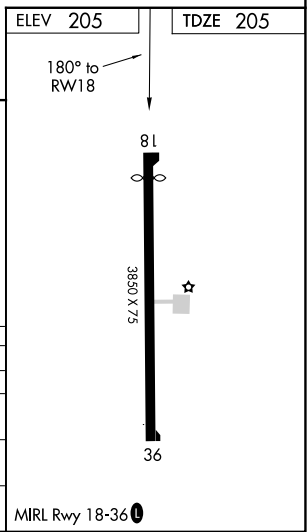
**△ NA** MISSED APPROACH: Climb to 1000 then climbing right turn to 2500 direct CLOUT and hold.

**COLUMBUS APP CON\***  
**135.6 323.275**

**CTAF**  
**122.9**



CATEGORY	A	B	C	D
GLS DA		NA		
LNAV/VNAV DA		NA		
LNAV MDA	980-1 775 (800-1)	980-1¼ 775 (800-1¼)	980-2½ 775 (800-2½)	NA
<b>C</b> CIRCLING	980-1 775 (800-1)	1020-1¼ 815 (900-1¼)	1020-2½ 815 (900-2½)	NA



SC-4, 22 FEB 2024 to 21 MAR 2024

SC-4, 22 FEB 2024 to 21 MAR 2024