

## CHIEF NINE DEPARTURE

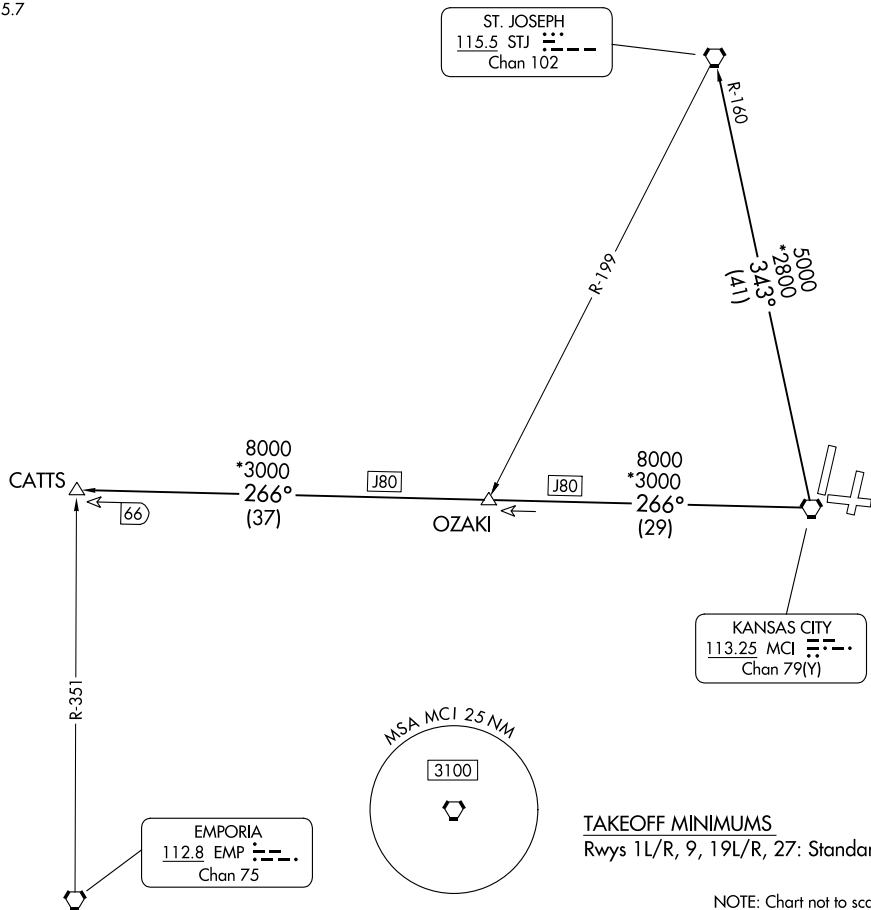
AL-780 (FAA)

KANSAS CITY INTL (MCI)  
KANSAS CITY, MISSOURI

KANSAS CITY DEP CON  
124.7 284.7  
D-ATIS  
128.375  
CLNC DEL  
135.7

RADAR required.

**TOP ALTITUDE:**  
10000



NOTE: Chart not to scale.

## DEPARTURE ROUTE DESCRIPTION

**TAKEOFF ALL RUNWAYS:** Climb on assigned heading for RADAR vectors to appropriate route. Maintain 10000 or as assigned by ATC, expect filed altitude 10 minutes after departure.

CATTS TRANSITION (CHIEF9.CATTS): From over MCI VORTAC on MCI R-266 to CATTS.

ST. JOSEPH TRANSITION (CHIEF9.STJ): From over MCI VORTAC on MCI R-343 and STJ R-160 to STJ VORTAC.

## CHIEF NINE DEPARTURE

(CHIEF9.MCI) 05OCT23

KANSAS CITY, MISSOURI  
KANSAS CITY INTL (MCI)

NC-3, 22 FEB 2024 to 21 MAR 2024