

WAAS CH 58321 W33A	APP CRS 330°	Rwy Idg 5000 TDZE 1713 Apt Elev 1718
--	------------------------	---

RNAV (GPS) RWY 33

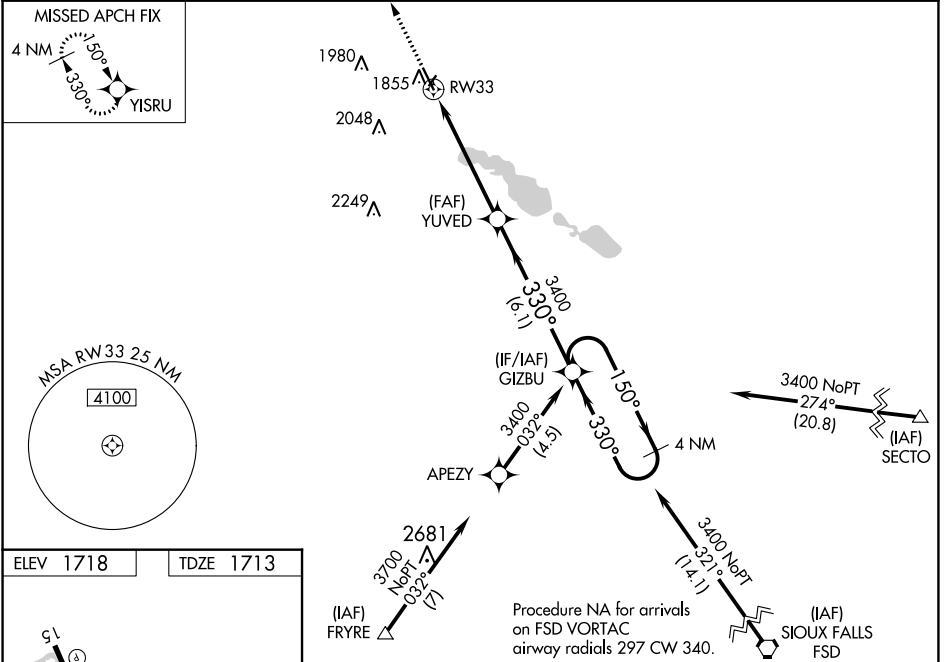
MADISON MUNI (MDS)

RNP APCH - GPS.

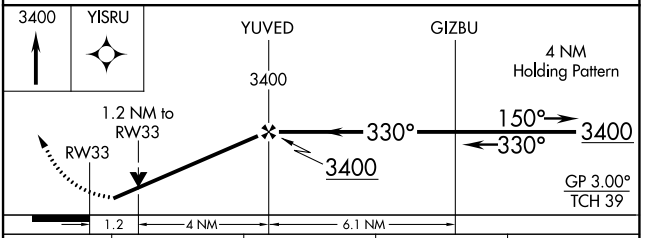
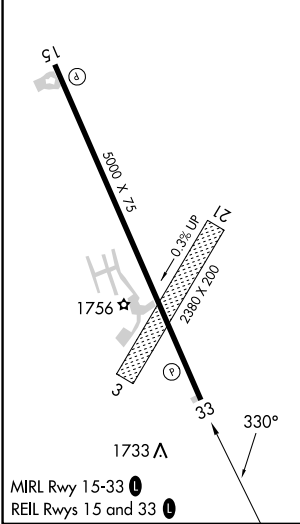
⚠ For uncompensated Baro-VNAV systems, LNAV/VNAV NA below -18°C or above 33°C. Rwy 33
 ⚠ helicopter visibility reduction below 3/4 SM NA. When local altimeter setting not received, use Brookings altimeter setting: increase LPV DA to 2021 feet; increase LNAV/VNAV DA to 2071 feet and all visibilities 1/4 SM; increase all MDAs 60 feet and visibility LNAV and Circling Cats C and D 1/4 SM. Circling NA to Rwy's 3 and 21. Baro-VNAV NA when using Brookings altimeter setting.

MISSED APPROACH:
Climb to 3400 direct YISRU and hold.

AWOS-3 118.35	MINNEAPOLIS CENTER 132.05 317.4	GCO 121.725	UNICOM 122.8 (CTAF) 📻
-------------------------	---	-----------------------	---------------------------------



ELEV 1718	TDZE 1713
-----------	-----------



CATEGORY	A	B	C	D
LPV DA	1963-1 250 (300-1)			
LNAV/VNAV DA	2013-1 300 (300-1)			
LNAV MDA	2120-1	407 (500-1)	2120-1 1/8	407 (500-1 1/8)
CIRCLING	2180-1	462 (500-1)	2400-2 682 (700-2)	2400-2 1/4 682 (700-2 1/4)

NC-1, 22 FEB 2024 to 21 MAR 2024

NC-1, 22 FEB 2024 to 21 MAR 2024