

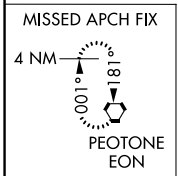
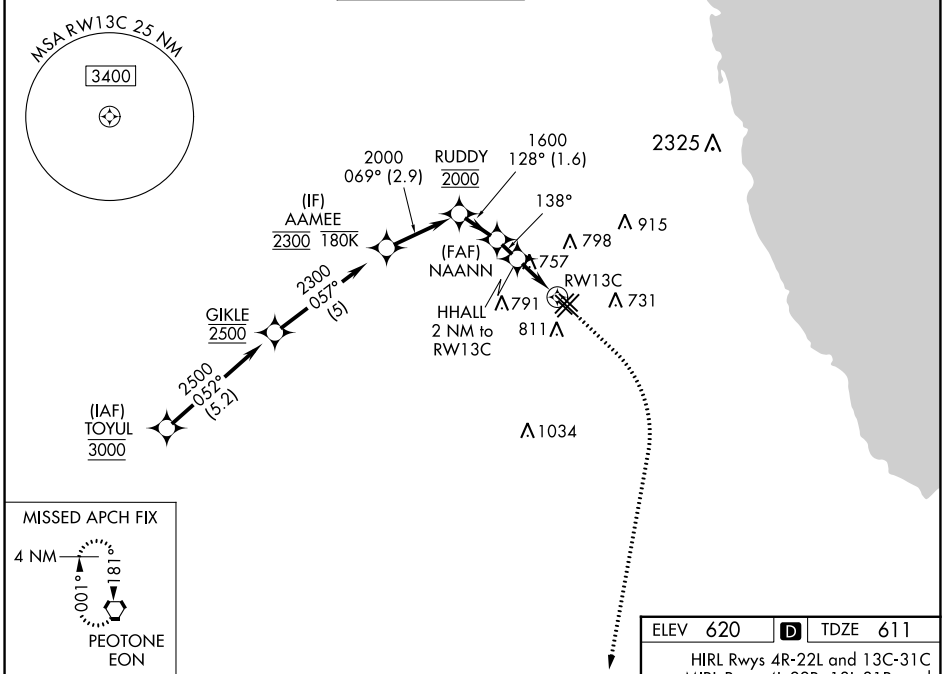
WAAS CH <b>50541</b> <b>W13A</b>	APP CRS <b>138°</b>	Rwy Idg TDZE Apt Elev	<b>6059</b> <b>611</b> <b>620</b>
--	------------------------	-----------------------------	---

# RNAV (GPS) Z RWY 13C

CHICAGO MIDWAY INTL (MDW)

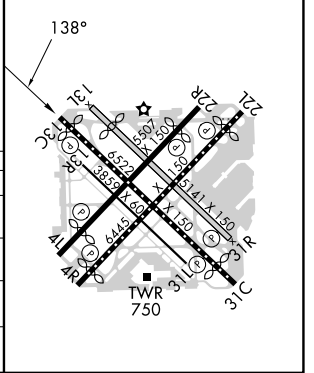
RNP APCH - GPS.		MISSED APPROACH: Climb to 1100 then climbing right turn to 2600 direct EON VORTAC and hold.	
<p><b>▼</b> Rwy 13C helicopter visibility reduction below RVR 4000 NA.</p> <p><b>▲</b> For uncompensated Baro-VNAV systems, LNAV/VNAV NA below -21°C or above 54°C. Circling Rwy 31R NA at night.</p>			

D-ATIS <b>132,75</b>	CHICAGO APP CON <b>128.2 353,875</b>	MIDWAY TOWER <b>135.2 269,125</b>	GND CON <b>118,075</b>	CLNC DEL <b>124,625</b>	CPDLC
-------------------------	---	--------------------------------------	---------------------------	----------------------------	-------



ELEV 620	<b>D</b> TDZE 611
HIRL Rwy 4R-22L and 13C-31C MIRL Rwy 4L-22R, 13L-31R, and 13R-31L REIL Rwy 4R, 22L, and 31C RLLS Rwy 13C and 31C	

	AAMEE	RUDDY	NAANN	HHALL	RW13C
	2300	2000	1600	1280	
		069°	128°	138°	
		2.9 NM	1.6 NM	1 NM	0.9 NM
				1.1 NM to RW13C	
GP 3.00° TCH 46					
CATEGORY	A	B	C	D	
LPV DA		861/40	250 (300-¾)		
LNAV/VNAV DA		1034-1¼	423 (500-1¼)		
LNAV MDA	1020/55	409 (400-1)	1020/60	409 (400-1¼)	
<b>C</b> CIRCLING	1120-1	500 (500-1)	1340-2 720 (800-2)	1340-2¼ 720 (800-2¼)	



EC-3, 22 FEB 2024 to 21 MAR 2024

EC-3, 22 FEB 2024 to 21 MAR 2024