

(ROCKY1.ROCKY) 23334

ROCKY ONE DEPARTURE

AL-6452 (FAA)

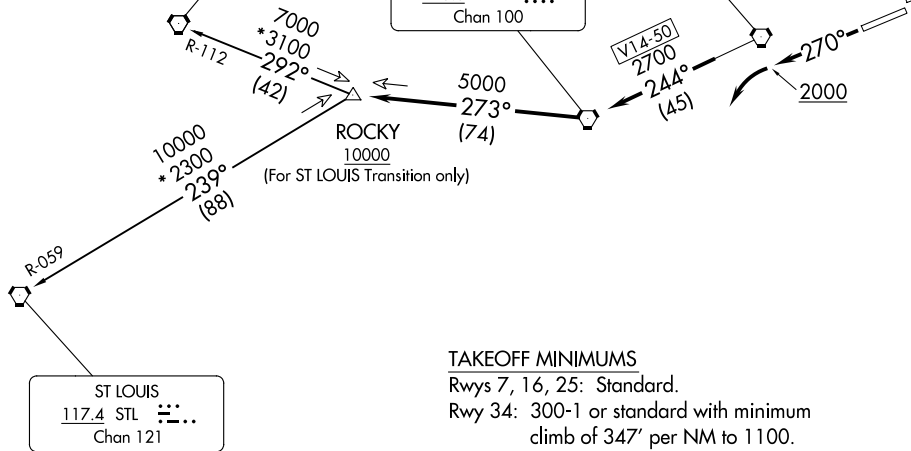
INDIANAPOLIS RGNL (MQJ)
INDIANAPOLIS, INDIANA

AWOS-3PT
124.175
CLNC DEL
119.25
INDIANAPOLIS DEP CON
127.15 317.8

SPINNER
112.7 SPI
Chan 74

TERRE HAUTE
115.3 TTH
Chan 100

BRICKYARD
116.3 VHP
Chan 110



TAKEOFF MINIMUMS

Rwys 7, 16, 25: Standard.

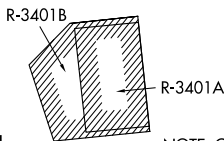
Rwy 34: 300-1 or standard with minimum climb of 347' per NM to 1100.

NOTE: RADAR required.

NOTE: Select appropriate localizer/DME frequency/channel prior to departure.

NOTE: Turbojets accelerate to 250K until reaching 10000, if unable advise ATC.

NOTE: Assigned to aircraft with a requested altitude of 11000 or above.



NOTE: Chart not to scale.

DEPARTURE ROUTE DESCRIPTION

TAKEOFF RWY 25: Climb heading 270° to 2000 before turning left. Then on assigned heading to assigned altitude. Thence

DEPARTING ALL OTHER AUTHORIZED RUNWAYS: Climb on assigned heading to assigned altitude. Thence

. . . . expect RADAR vectors to join VHP R-244 to TTH VORTAC, then via TTH R-273 to ROCKY INT then via transition or assigned route. Expect clearance to requested altitude ten minutes after departure.

SPINNER TRANSITION (ROCKY1.SPI): From over ROCKY INT on SPI R-112 to SPI VORTAC.

ST LOUIS TRANSITION (ROCKY1.STL): From over ROCKY INT on STL R-059 to STL VORTAC.

ROCKY ONE DEPARTURE

(ROCKY1.ROCKY) 01FEB18

INDIANAPOLIS, INDIANA
INDIANAPOLIS RGNL (MQJ)

EC-2, 22 FEB 2024 to 21 MAR 2024

EC-2, 22 FEB 2024 to 21 MAR 2024