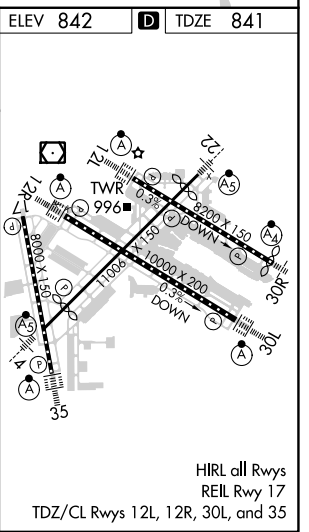
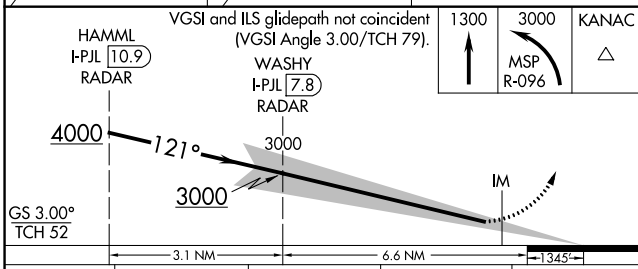
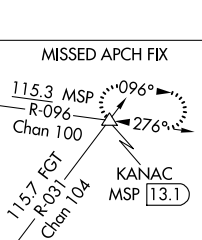
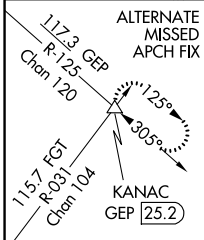
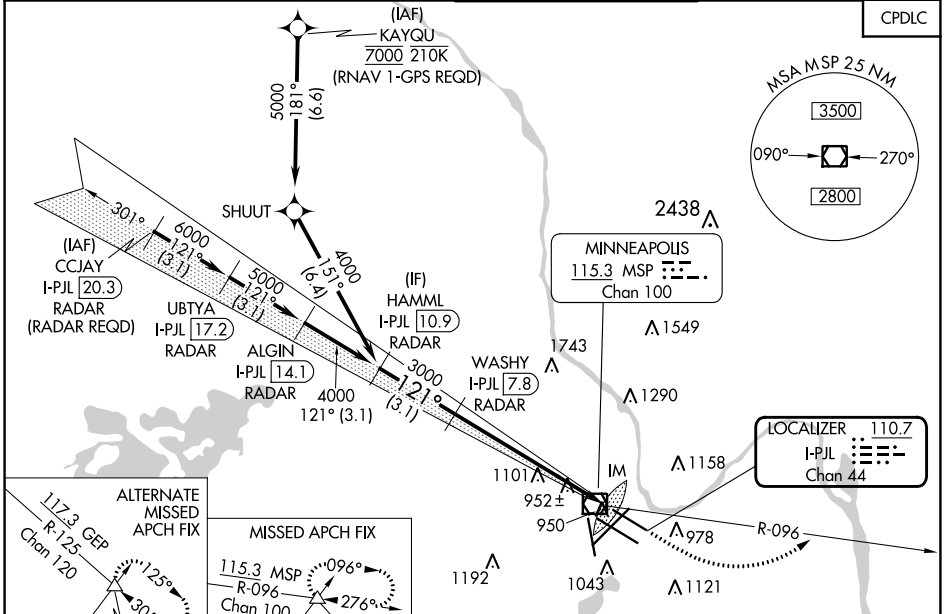


LOC/DME I-PJL 110.7 Chan 44	APP CRS 121°	Rwy Idg TDZE Apt Elev	7620 841 842
---	------------------------	-----------------------------	---

ILS RWY 12L (SA CAT I)

MINNEAPOLIS-ST PAUL INTL/WOLD-CHAMBERLAIN (MSP)

⚠ Simultaneous approach authorized with Rwy 12R. Requires specific OPSPEC, MSPEC, or LOA approval and use of HUD to DH. DME or RADAR required.	⚠ MISSED APPROACH: Climb to 1300, then climbing left turn to 3000 on MSP VOR/DME R-096 to KANAC INT/MSP 13.1 DME and hold.	D-ATIS ARR 135.35 239.275 DEP 120.8		MINNEAPOLIS APP CON 118.725 335.65 (Rwy 35) 119.3 335.65 (12L-30R, 4-22, 17) 126.95 335.65 (12R-30L)	MINNEAPOLIS TOWER 123.675 273.55 (17-35) 123.95 273.55 (12L-30R) 126.7 273.55 (12R-30L, 4-22)	GND CON N 121.8 348.6 S 121.9 348.6 W 127.925 348.6	CLNC DEL 133.2
		CPDLC					



CATEGORY	A	B	C	D
S-ILS 12L	RA 147/14 150 DA 991			

SA CATEGORY I ILS - SPECIAL AIRCREW & AIRCRAFT CERTIFICATION REQUIRED

NC-1, 22 FEB 2024 to 21 MAR 2024

NC-1, 22 FEB 2024 to 21 MAR 2024