

WAAS CH <b>90520</b> <b>W04A</b>	APP CRS <b>038°</b>	Rwy Idg <b>3203</b> TDZE <b>738</b> Apt Elev <b>745</b>
--	------------------------	---

# RNAV (GPS) RWY 4L

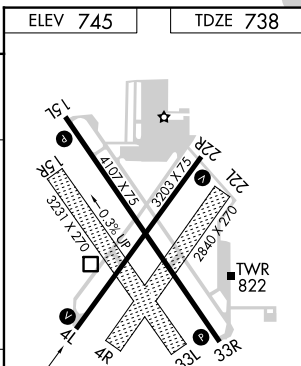
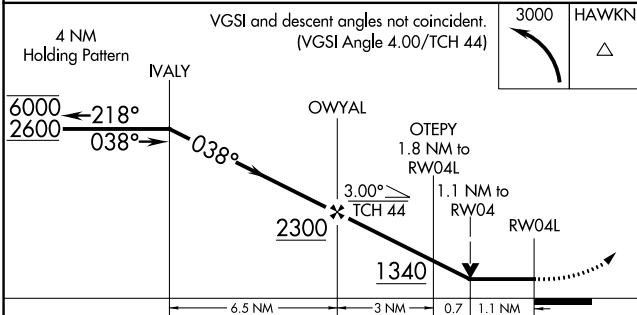
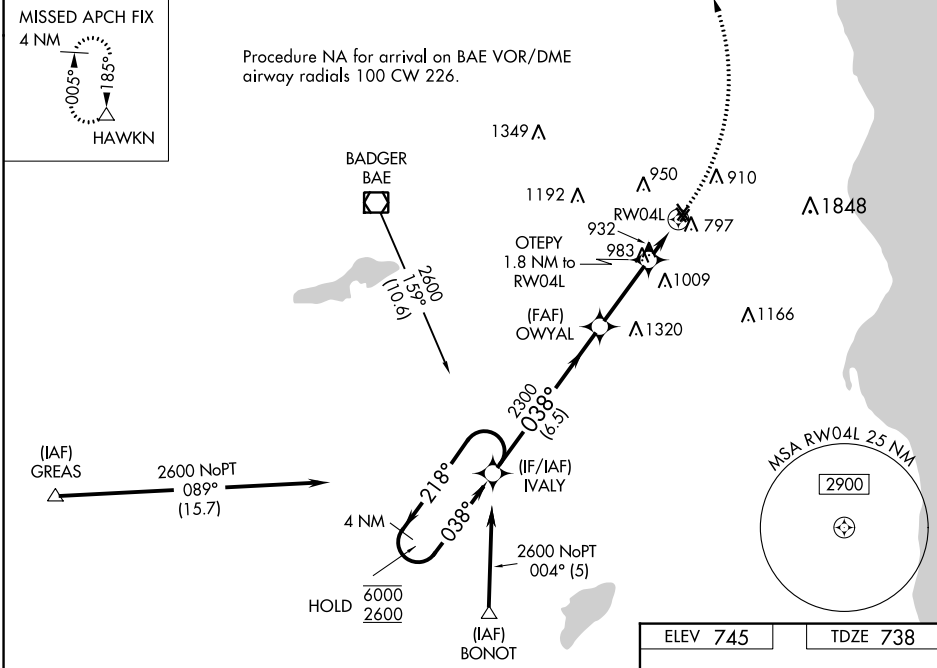
LAWRENCE J TIMMERMAN (MWC)

RNP APCH - GPS.

- ▼ Circling NA to Rwys 4R, 15R, 22L and 33L
- ▲ Rwy 4L helicopter visibility reduction below  $\frac{3}{4}$  SM NA.

MISSED APPROACH:  
Climbing left turn to  
3000 direct HAWKN  
and hold.

ATIS <b>128.3</b>	MILWAUKEE APP CON <b>125.35 307.0</b>	TIMMERMAN TOWER ★ <b>120.5 (CTAF) 0</b>	GND CON <b>121.7</b>	CLNC DEL <b>121.7</b> (When twr closed)	UNICOM <b>122.95</b>
----------------------	--	--	-------------------------	---	-------------------------



CATEGORY	A	B	C	D
LP MDA	1240-1	502 (500-1)	1240-1 $\frac{3}{8}$	502 (500-1 $\frac{3}{8}$ )
LNAV MDA	1300-1	562 (600-1)	1300-1 $\frac{5}{8}$	562 (600-1 $\frac{5}{8}$ )
CIRCLING	1300-1 555 (600-1)	1340-1 595 (600-1)	1360-1 $\frac{3}{4}$ 615 (700-1 $\frac{3}{4}$ )	1560-2 $\frac{3}{4}$ 815 (900-2 $\frac{3}{4}$ )

REIL Rwys 4L, 15L, 22R, and 33R 0  
MIRL Rwys 4L-22R and 15L-33R 0

EC-3, 22 FEB 2024 to 21 MAR 2024

EC-3, 22 FEB 2024 to 21 MAR 2024