

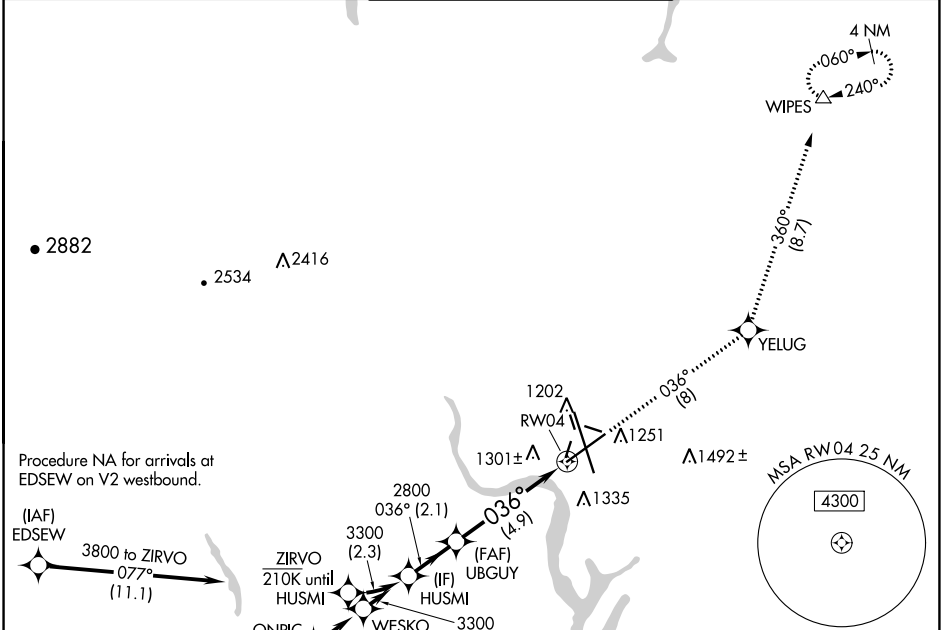
APP CRS	Rwy Idg	<b>10000</b>
<b>036°</b>	TDZE	<b>1189</b>
	Apt Elev	<b>1189</b>

# RNAV (RNP) Z RWY 4

GRANT COUNTY INTL (MWH)

RNP AR APCH-GPS.		MISSED APPROACH: Climb to 4000 on track 036° to YELUG and track 360° to WIPES and hold.	

ATIS <b>119.05</b>	GRANT COUNTY APP CON * <b>126.4 379.95</b>	GRANT COUNTY TOWER * <b>118.25 (CTAF) 0 257.8 (EAST)</b> <b>128.0 257.8 (WEST)</b>	GND CON <b>121.9</b>	UNICOM <b>122.95</b>
-----------------------	---	--	-------------------------	-------------------------



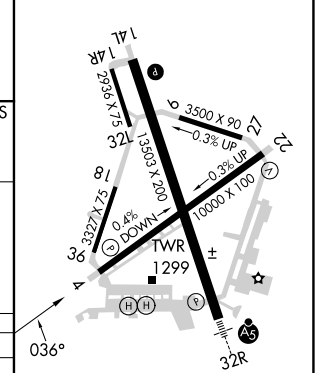
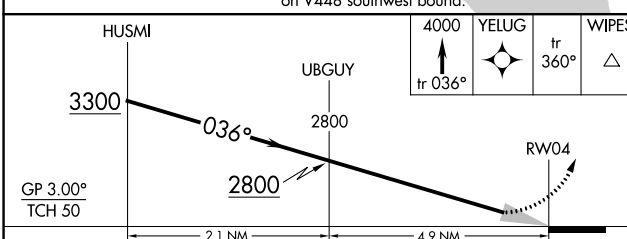
Procedure NA for arrivals at EDSEW on V2 westbound.

(IAF) EDSEW 3800 to ZIRVO 077° (11.1)

(IAF) RUBEL 4300 027° (4.8)

Procedure NA for arrivals at RUBEL on V448 southwest bound.

ELEV 1189	<b>D</b>	TDZE 1189
-----------	----------	-----------



CATEGORY	A	B	C	D
RNP 0.10 DA	1549-1 360 (400-1)			
RNP 0.30 DA	1644-1 3/8 455 (500-1 3/8)			

## AUTHORIZATION REQUIRED

REIL Rwy 4

REIL Rws 14L and 22

HIRL Rwy 14L-32R

MIRL Rws 4-22 and 18-36

NW-1, 22 FEB 2024 to 21 MAR 2024

NW-1, 22 FEB 2024 to 21 MAR 2024