

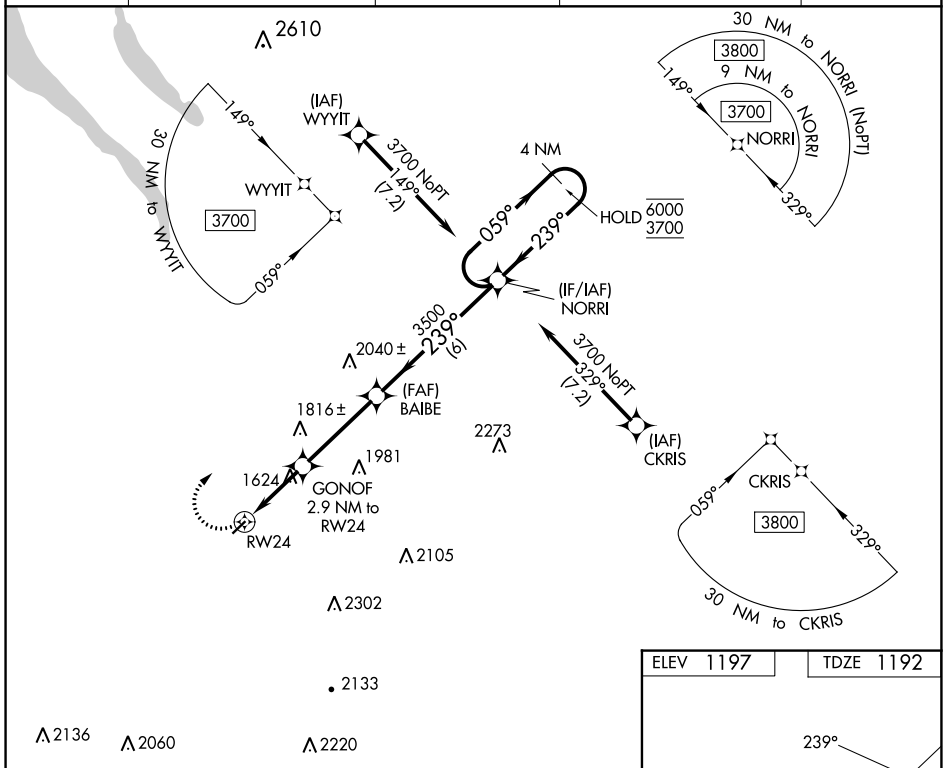
APP CRS	Rwy Idg	<b>3401</b>
<b>239°</b>	TDZE	<b>1192</b>
	Apt Elev	<b>1197</b>

# RNAV (GPS) RWY 24

CORTLAND COUNTY/CHASE FLD (NØ3)

RNP APCH.	MISSED APPROACH: Climbing right turn to 3700 direct NORRI and hold.
▼ ▲	Rwy 24 helicopter visibility reduction below ¾SM NA.

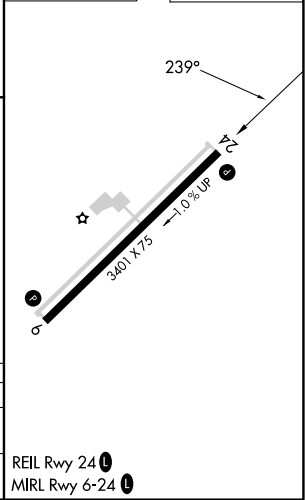
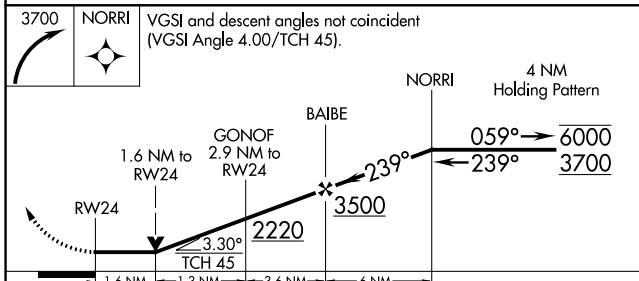
AWOS-3 <b>132.225</b>	BINGHAMTON APP CON ★ <b>118.6 257.625</b> (S-SE)	ELMIRA APP CON ★ <b>124.3 257.8</b> (W)	SYRACUSE APP CON <b>126.125 269.125</b> (N)	UNICOM <b>122.8</b> (CTAF) 📻
--------------------------	---	--	--	---------------------------------



NE-2, 22 FEB 2024 to 21 MAR 2024

NE-2, 22 FEB 2024 to 21 MAR 2024

ELEV 1197	TDZE 1192
-----------	-----------



CATEGORY	A	B	C	D
LNVA MDA	1880-1	688 (700-1)	1880-2 688 (700-2)	NA
CIRCLING	1940-1 743 (800-1)	1980-1 783 (800-1)	2240-3 1043 (1100-3)	NA

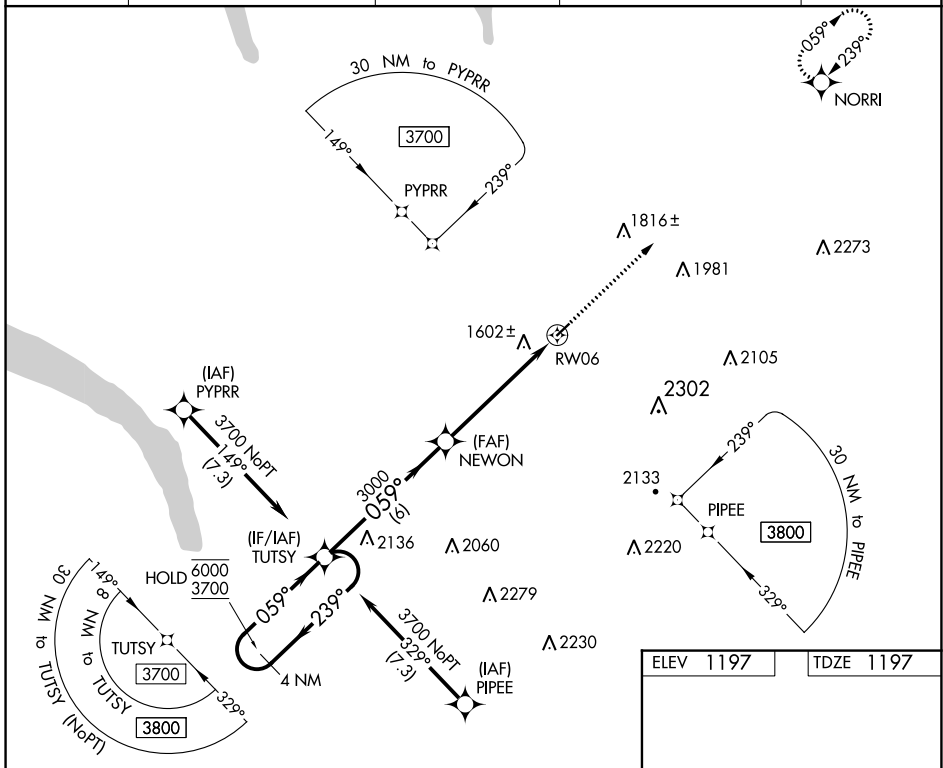
APP CRS	Rwy Idg	<b>3401</b>
<b>059°</b>	TDZE	<b>1197</b>
	Apt Elev	<b>1197</b>

# RNAV (GPS) RWY 6

CORTLAND COUNTY/CHASE FLD (N03)

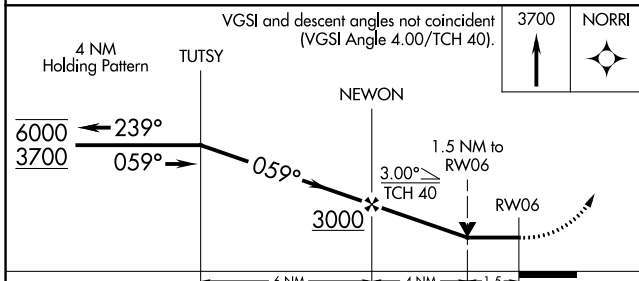
RNP APCH.		MISSED APPROACH: Climb to 3700 direct NORRI and hold.		
Rwy 6 helicopter visibility reduction below 3/4 SM NA.				

AWOS-3 <b>132.225</b>	BINGHAMTON APP CON ★ <b>118.6 257.625 (S-S-E)</b>	ELMIRA APP CON ★ <b>124.3 257.8 (W)</b>	SYRACUSE APP CON <b>126.125 269.125 (N)</b>	UNICOM <b>122.8 (CTAF)</b>
--------------------------	--	--	--	-------------------------------

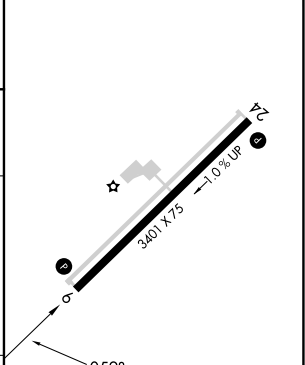


NE-2, 22 FEB 2024 to 21 MAR 2024

NE-2, 22 FEB 2024 to 21 MAR 2024



ELEV 1197	TDZE 1197
-----------	-----------



CATEGORY	A	B	C	D
LNVA MDA	1860-1	663 (700-1)	1860-1 7/8 663 (700-1 7/8)	NA
CIRCLING	1940-1 743 (800-1)	1980-1 783 (800-1)	2240-3 1043 (1100-3)	NA

REIL Rwy 24   
 MRL Rwy 6-24

VOR/DME CFB <b>112.2</b> Chan <b>59</b>	APP CRS <b>002°</b>	Rwy Idg TDZE Apt Elev	<b>N/A</b> <b>N/A</b> <b>1197</b>
---	------------------------	-----------------------------	---

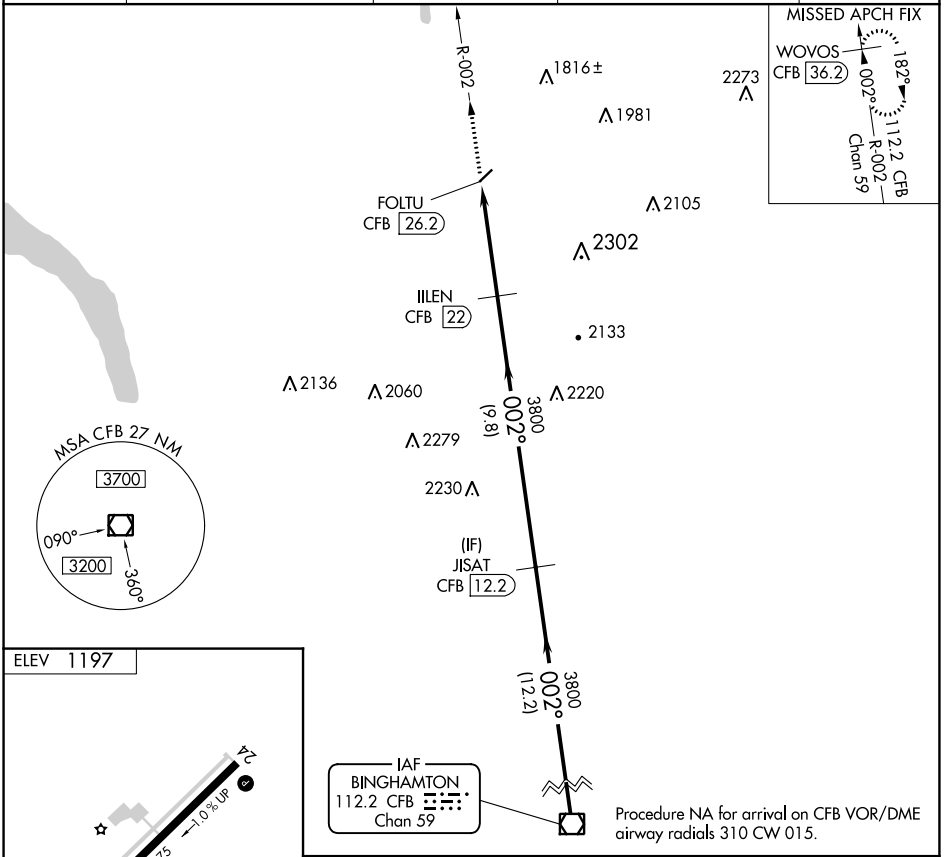
# VOR-A

CORTLAND COUNTY/CHASE FLD (N03)

DME required.

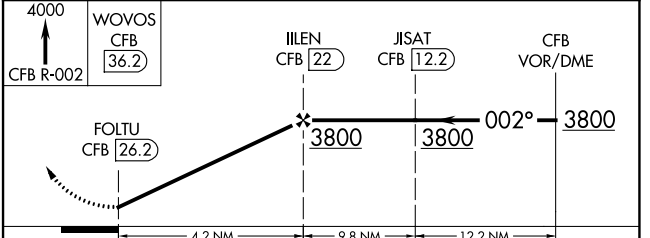
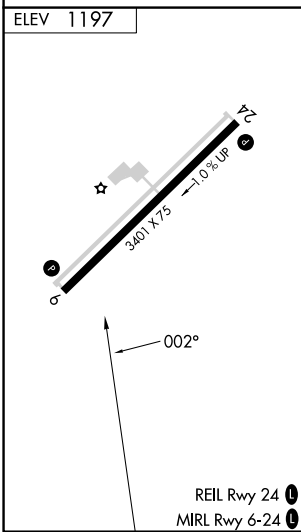
MISSED APPROACH: Climb to 4000 on CFB VOR/DME R-002 to WOVOS/36.2 DME and hold.

AWOS-3 <b>132.225</b>	BINGHAMTON APP CON ★ <b>118.6 257.625</b> (S-SE)	ELMIRA APP CON ★ <b>124.3 257.8</b> (W)	SYRACUSE APP CON <b>126.125 269.125</b> (N)	UNICOM <b>122.8</b> (CTAF)
--------------------------	---	--	--	-------------------------------



NE-2, 22 FEB 2024 to 21 MAR 2024

NE-2, 22 FEB 2024 to 21 MAR 2024



CATEGORY	A	B	C	D
CIRCLING	2380-1¼ 1183 (1200-1¼)	2380-1½ 1183 (1200-1½)	2380-3 1183 (1200-3)	NA

# VOR-A