

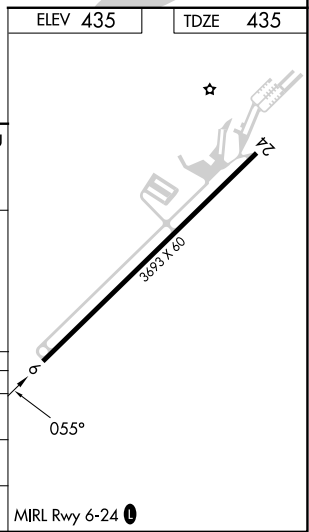
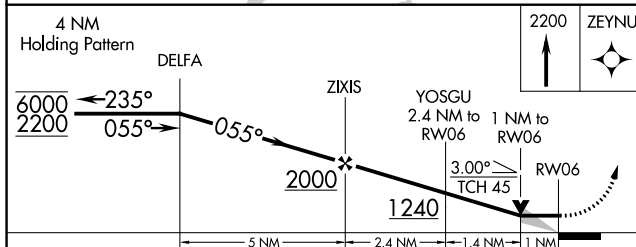
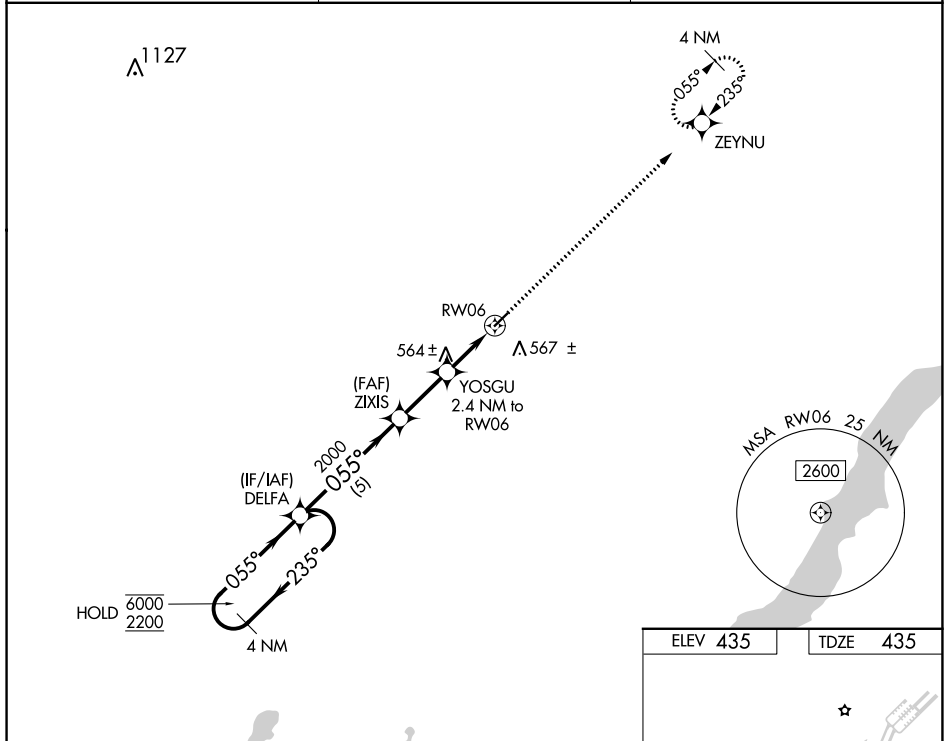
WAAS CH <b>66043</b> <b>W06A</b>	APP CRS <b>055°</b>	Rwy Idg TDZE Apt Elev	<b>3693</b> <b>435</b> <b>435</b>
--	------------------------	-----------------------------	---

# RNAV (GPS) RWY 6

NEW GARDEN (N57)

RNP APCH.	<p><b>V</b> VDP NA when using New Castle altimeter setting. Obtain local altimeter setting on CTAF; when local altimeter setting not received, use New Castle altimeter setting and increase all MDA 80 feet. Increase LP Cat C visibility <math>\frac{3}{8}</math> SM, LNAV Cat C visibility <math>\frac{1}{4}</math> SM and Circling Cat C visibility <math>\frac{1}{4}</math> SM.</p> <p><b>NA</b></p>	MISSED APPROACH: Climb to 2200 direct ZEYNU and hold.
-----------	---	--

PHILADELPHIA APP CON <b>124.35 319.15</b>	CLNC DEL <b>125.6</b>	UNICOM <b>123.05 (CTAF) 0</b>
--	--------------------------	----------------------------------



CATEGORY	A	B	C	D
LP MDA	800-1 365 (400-1)			NA
LNAV MDA	820-1	385 (400-1)	820-1/8 385 (400-1/8)	NA
<b>C</b> CIRCLING	960-1	525 (600-1)	960-1/2 525 (600-1/2)	NA

NE-4, 22 FEB 2024 to 21 MAR 2024

NE-4, 22 FEB 2024 to 21 MAR 2024