

BEAUFORT, SOUTH CAROLINA


RNAV (GPS) RWY 5

WAAS Chan 90095 W05A	APCH CRS 047°	Rwy Idg 12,202 TDZE 37 Arpt Elev 37
--	-------------------------	--

[USN]

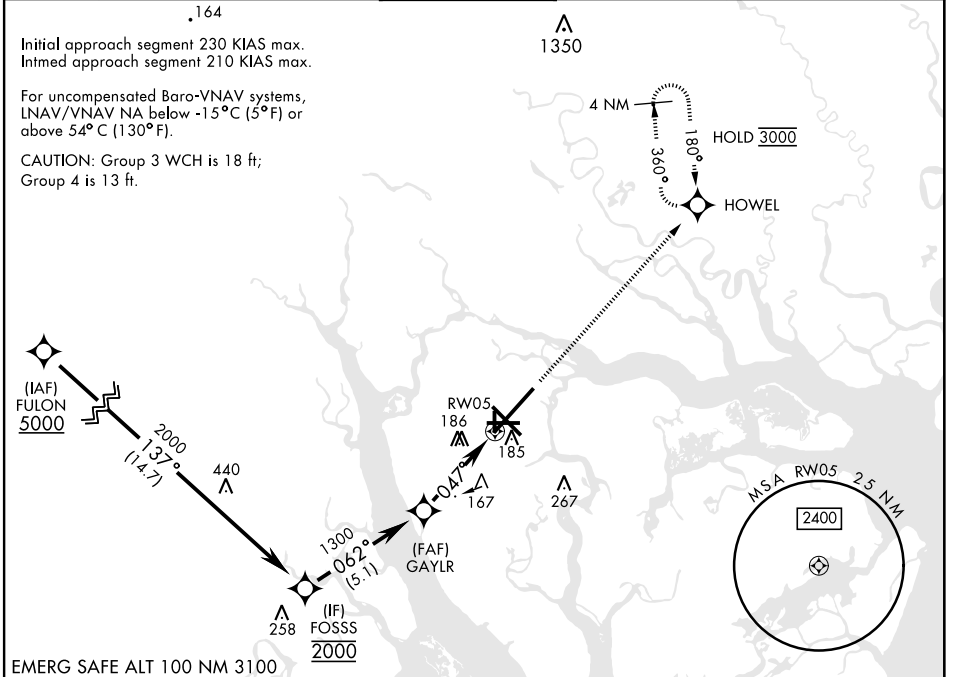
BEAUFORT MCAS (MERRITT FLD) (KNBC)

RNP APCH - DME/DME RNP-0.3 NA
RADAR required
<p>▼ * When ALS inop, increase vis to 1 mile.</p> <p>** When ALS inop, increase CAT AB vis to 1 mile, CAT CD to 1/2 miles.</p>

SALSF 

MISSED APPROACH: Climb to 3000 direct HOWEL and hold, continue climb-in-hold to 3000.

ATIS ★ 279.525	APP CON 125.125 292.125 (ABV 3000) 123.7 269.125 (3000 and BLW)	TOWER★ 119.05 342.875	GND CON 128.15 348.625	CLNC DEL 128.15 254.375	ASR/ PAR
--------------------------	---	---------------------------------	----------------------------------	-----------------------------------	-------------




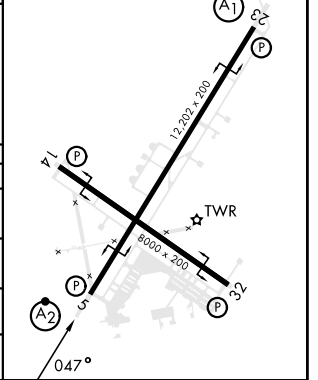
SE-2, 22 FEB 2024 to 21 MAR 2024

SE-2, 22 FEB 2024 to 21 MAR 2024



ELEV 37	TDZE 37
HIRL Rwy 5-23 and 14-32	

CATEGORY	A	B	C	D
LPV DA	237-3/4		200	(200-3/4)
LNAV/ * VNAV DA	409-3/4		372	(400-3/4)
LNAV MDA	420-3/4	383 (400-3/4)	420-7/8	383 (400-7/8)
 CIRCLING	500-1	463 (500-1)	580-1 1/2 543 (600-1 1/2)	600-2 563 (600-2)



BEAUFORT, SOUTH CAROLINA
 Amdt 5 01DEC22

32°29'N-80°43'W

BEAUFORT MCAS (MERRITT FLD) (KNBC)

RNAV (GPS) RWY 5