

WAAS CH <b>42524</b> <b>W10A</b>	APP CRS <b>096°</b>	Rwy Idg TDZE Apt Elev	<b>3013</b> <b>237</b> <b>237</b>
--	------------------------	-----------------------------	---

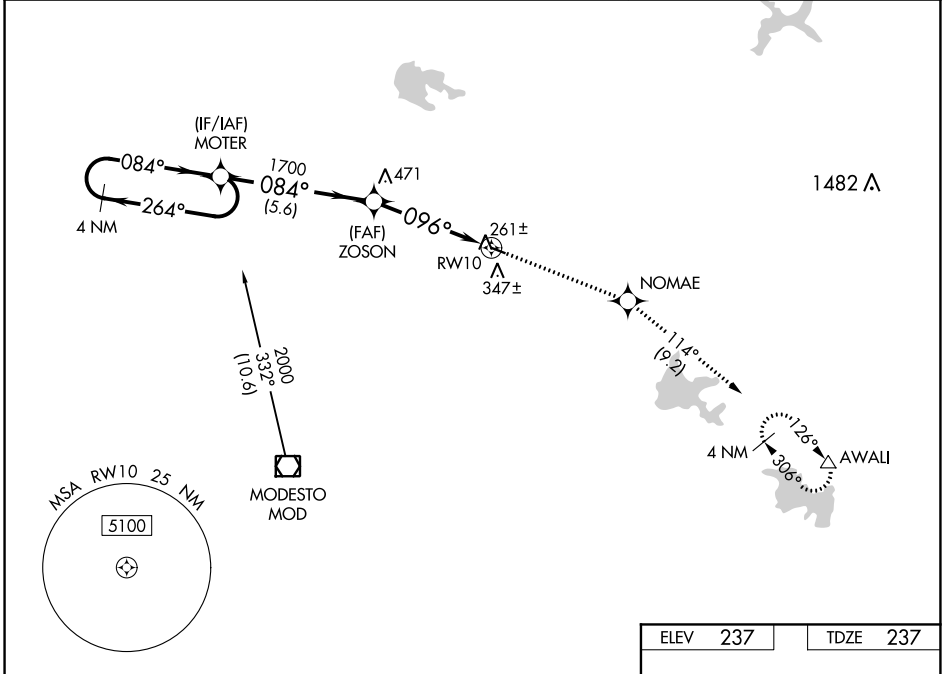
# RNAV (GPS) RWY 10

OAKDALE (O27)

**Baro-VNAV NA. DME/DME RNP-0.3 NA.**  
**NA** Use Modesto altimeter setting; when not received, use Stockton altimeter setting and increase all DA 36 feet and all MDA 40 feet; increase LPV and LNAV/VNAV all Cats and LNAV Cat C visibility 1/8 SM.

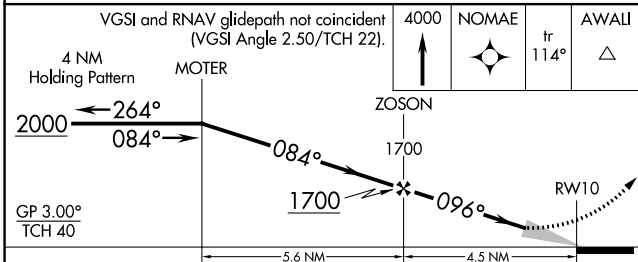
**MISSED APPROACH:** Climb to 4000 direct NOMAE and on track 114° to AWALI and hold, continue climb-in-hold to 4000.

MOD ASOS <b>127.7</b>	NORCAL APP CON <b>125.1 363.2</b>	UNICOM <b>122.8 (CTAF)</b>
--------------------------	--------------------------------------	-------------------------------



SW-2, 03 DEC 2020 to 31 DEC 2020

SW-2, 03 DEC 2020 to 31 DEC 2020



ELEV	237	TDZE	237
------	-----	------	-----

4000	NOMAE	tr 114°	AWALI
------	-------	---------	-------

096° to RW10	0.4% UP	3013 X.75
--------------	---------	-----------

REIL Rwy 10 and 28	MIRL Rwy 10-28
--------------------	----------------

CATEGORY	A	B	C	D
LPV DA	531-1 294 (300-1)			NA
LNAV/VNAV DA	555-1 1/8 318 (400-1 1/8)			NA
LNAV MDA	760-1	523 (600-1)	760-1 1/2 523 (600-1 1/2)	NA
<b>C</b> CIRCLING	760-1 523 (600-1)	820-1 583 (600-1)	920-2 683 (700-2)	NA

WAAS CH <b>70523</b> <b>W28A</b>	APP CRS <b>277°</b>	Rwy Idg <b>3013</b> TDZE <b>237</b> Apt Elev <b>237</b>
--	------------------------	---

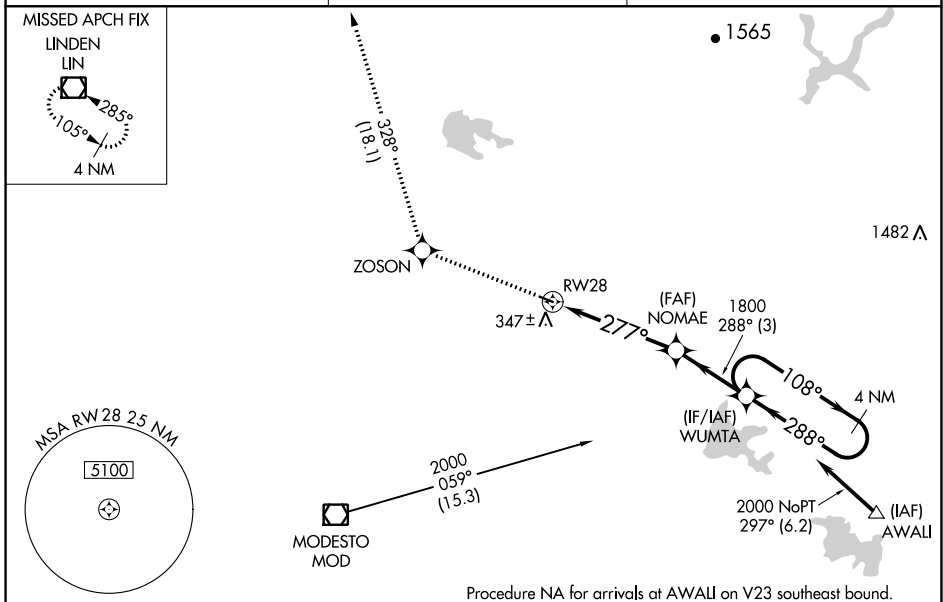
# RNAV (GPS) RWY 28

OAKDALE (O27)

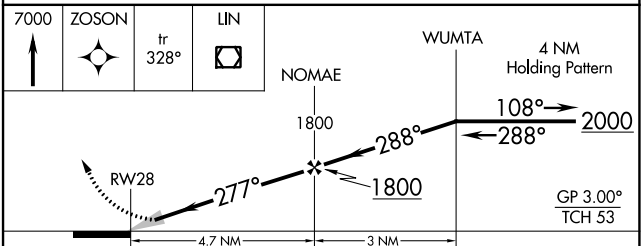
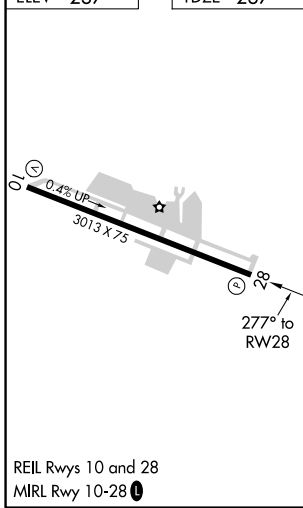
**NA** Baro-VNAV NA. DME/DME RNP-0.3 NA. Use Modesto altimeter setting; when not received, use Stockton altimeter setting and increase LPV DA to 567 feet and all visibilities  $\frac{1}{4}$  SM; increase LNAV/VNAV DA to 570 feet and all visibilities  $\frac{1}{8}$  SM; increase all MDAs 40 feet.

MISSED APPROACH: Climb to 7000 direct ZOSON and on track 328° to LIN VOR/DME and hold, continue climb-in-hold to 7000.

MOD ASOS <b>127.7</b>	NORCAL APP CON <b>125.1 363.2</b>	UNICOM <b>122.8 (CTAF)</b>
--------------------------	--------------------------------------	-------------------------------



ELEV <b>237</b>	TDZE <b>237</b>
-----------------	-----------------



CATEGORY	A	B	C	D
LPV DA	531-7 $\frac{8}{16}$	294 (300-7 $\frac{8}{16}$ )		NA
LNAV/VNAV DA	534-1	297 (300-1)		NA
LNAV MDA	820-1	583 (600-1)	820-1 $\frac{3}{4}$ 583 (600-1 $\frac{3}{4}$ )	NA
<b>C</b> CIRCLING	820-1	583 (600-1)	920-2 683 (700-2)	NA

SW-2, 03 DEC 2020 to 31 DEC 2020

SW-2, 03 DEC 2020 to 31 DEC 2020

VOR/DME MOD <b>114.6</b> Chan <b>93</b>	APP CRS <b>027°</b>	Rwy Idg TDZE Apt Elev	<b>N/A</b> <b>N/A</b> <b>237</b>
---	------------------------	-----------------------------	--

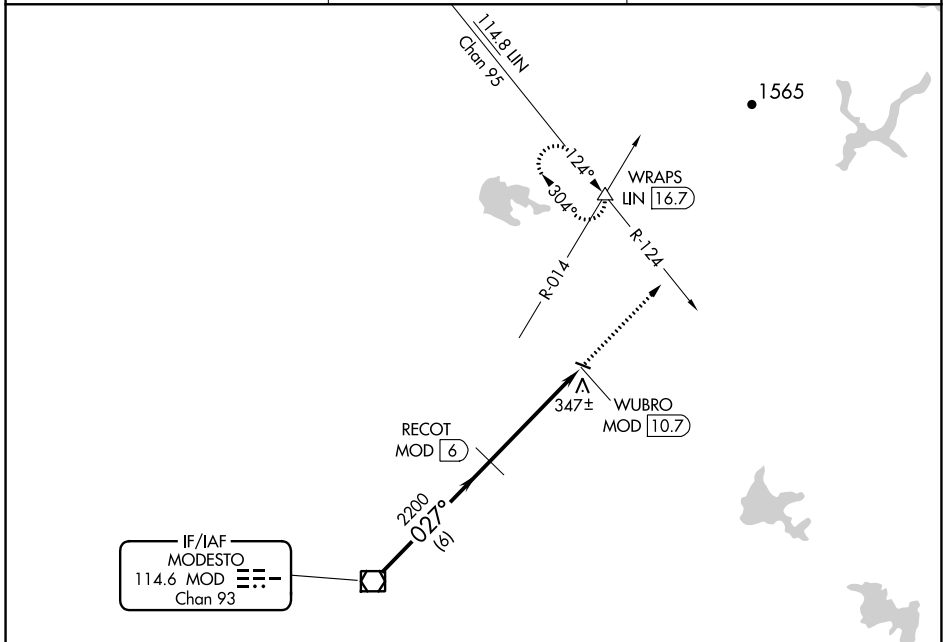
# VOR-A

OAKDALE (O27)

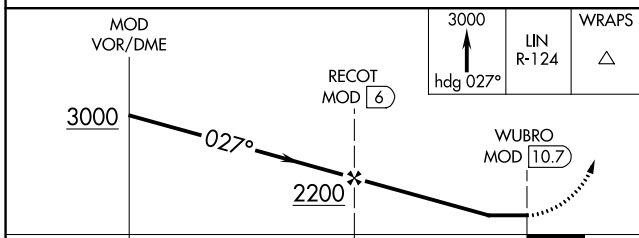
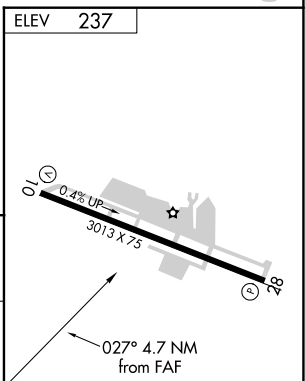
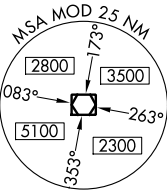
**▼** DME required.  
**▲NA** Use Modesto altimeter setting, when not received, use Stockton altimeter setting and increase all MDA 40 feet.

MISSED APPROACH: Climb to 3000 on heading 027° and LIN R-124 to WRAPS INT/LIN 16.7 DME and hold, continue climb-in-hold to 3000.

MOD ASOS <b>127.7</b>	NORCAL APP CON <b>125.1 363.2</b>	UNICOM <b>122.8 (CTAF) 0</b>
--------------------------	--------------------------------------	---------------------------------



IF/IAF  
 MODESTO  
 114.6 MOD ---  
 Chan 93



CATEGORY	A	B	C	D
<b>C</b> CIRCLING	820-1	583 (600-1)	920-2 683 (700-2)	NA

REIL Rwy 10 and 28  
 MRL Rwy 10-28 0

SW-2, 03 DEC 2020 to 31 DEC 2020

SW-2, 03 DEC 2020 to 31 DEC 2020