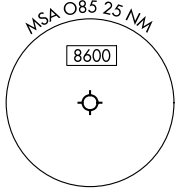
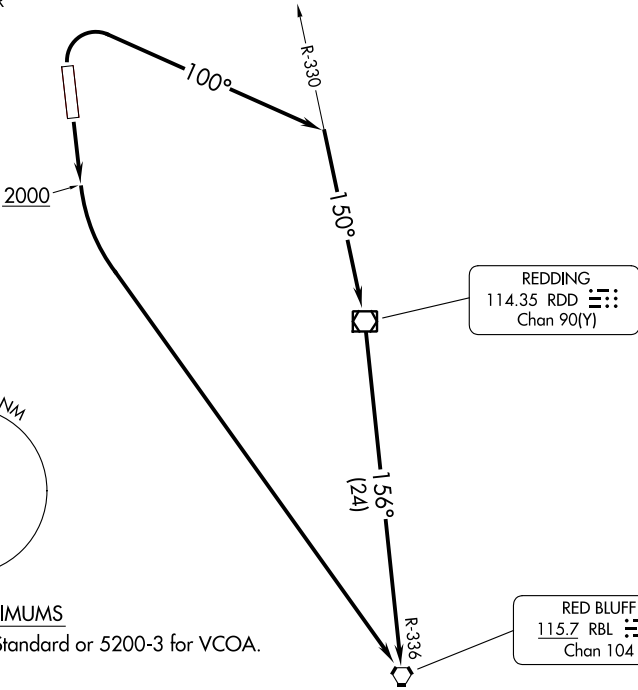


# REDDING ONE DEPARTURE (OBSTACLE)

OAKLAND CENTER  
132.2 350.3  
AWOS-2  
118.675  
CTAF  
122.8



### TAKEOFF MINIMUMS

Rwys 16, 34: Standard or 5200-3 for VCOA.

### TAKEOFF OBSTACLE NOTES

- Rwy 16: Trees beginning 75' from DER, 319' left of centerline, up to 30' AGL/732' MSL.  
 Vehicle on road 273' from DER, 537' right of centerline, 730' MSL.  
 Tree 771' from DER, 613' right of centerline, 747' MSL.  
 Tree 1105' from DER, 324' right of centerline, 755' MSL.  
 Trees beginning 1207' from DER, 162' right of centerline, up to 51' AGL/762' MSL.
- Rwy 34: Building 2' from DER, 455' left of centerline, 724' MSL.  
 Pole, sign beginning 63' from DER, 179' right of centerline, up to 749' MSL.  
 Navaid, trees, pole beginning 84' from DER, 260' left of centerline, up to 748' MSL.  
 Trees, fence, poles beginning 116' from DER, 182' right of centerline, up to 46' AGL/765' MSL.  
 Trees, pole beginning 373' from DER, 224' left of centerline, up to 57' AGL/753' MSL.  
 Trees beginning 623' from DER, 440' right of centerline, up to 775' MSL.  
 Pole, trees beginning 750' from DER, 19' left of centerline, up to 754' MSL.  
 Trees beginning 1766' from DER, 870' left of centerline, up to 779' MSL.      NOTE: Chart not to scale.

### DEPARTURE ROUTE DESCRIPTION

TAKEOFF RUNWAY 16: Climb to 2000, then climbing left turn direct RBL VORTAC.  
TAKEOFF RUNWAY 34: Climbing right turn on heading 100° to intercept RDD VOR/DME R-330 to RDD VOR/DME, then on RDD VOR/DME R-156 to intercept RBL VORTAC R-336 to RBL VORTAC.

VCOA ALL RUNWAYS: Obtain ATC approval for VCOA when requesting IFP clearance.  
 Climb in visual conditions to cross Benton Fld airport at or above 5800 before proceeding on course.

# REDDING ONE DEPARTURE (OBSTACLE)