

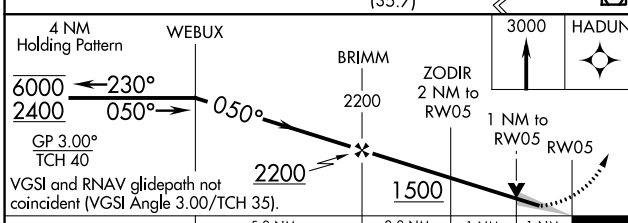
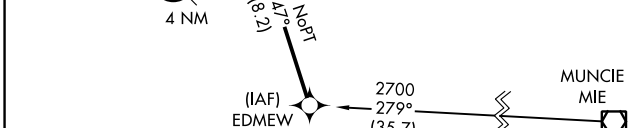
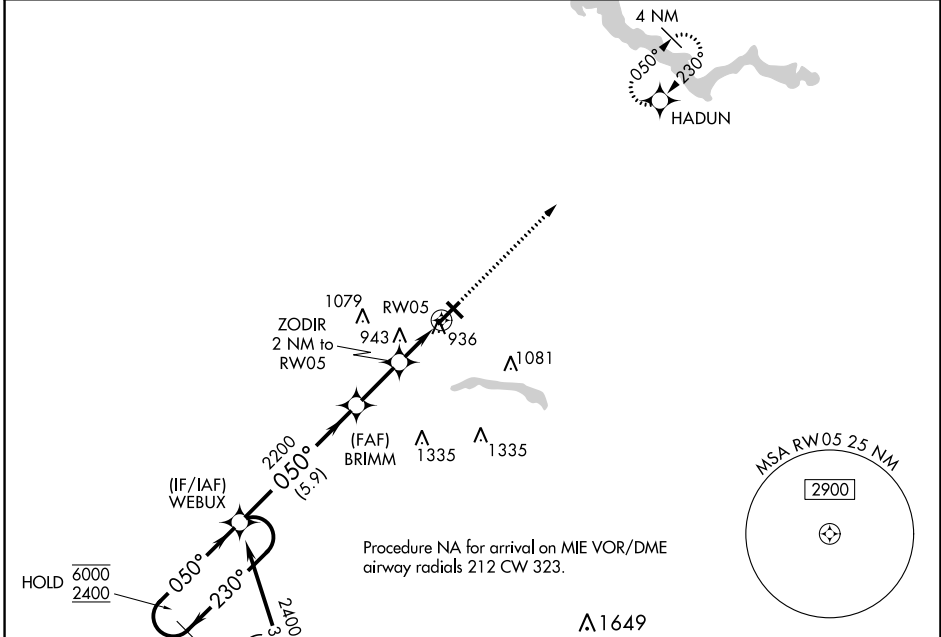
WAAS CH 78139 W05A	APP CRS 050°	Rwy Idg TDZE Apt Elev	6001 832 832
--	------------------------	-----------------------------	---

RNAV (GPS) RWY 5

KOKOMO MUNI (OKK)

RNP APCH - GPS.		MISSED APPROACH: Climb to 3000 direct HADUN and hold.
For uncorrected Baro-VNAV systems, LNAV/VNAV NA below -16°C or above 54°C.		

AWOS-3PT 128.675	GRISSOM APP CON * 121.05 338.275	CLNC DEL 120.0	UNICOM 123.0 (CTAF) 0
----------------------------	--	--------------------------	---------------------------------



ELEV 832	TDZE 832
----------	----------

HADUN

MUNCIE MIE

HIRL Rwy 5-23 0

MIRL Rwy 14-32 0

REIL Rws 5, 14 and 32 0

CATEGORY	A	B	C	D
LPV DA		1082- ³ / ₄	250 (300- ³ / ₄)	
LNAV/VNAV DA		1102- ⁷ / ₈	270 (300- ⁷ / ₈)	
LNAV MDA		1200-1	368 (400-1)	
CIRCLING	1260-1	1300-1	1400-1 ¹ / ₂	1420-2
	428 (500-1)	468 (500-1)	568 (600-1 ¹ / ₂)	588 (600-2)

EC-2, 22 FEB 2024 to 21 MAR 2024

EC-2, 22 FEB 2024 to 21 MAR 2024