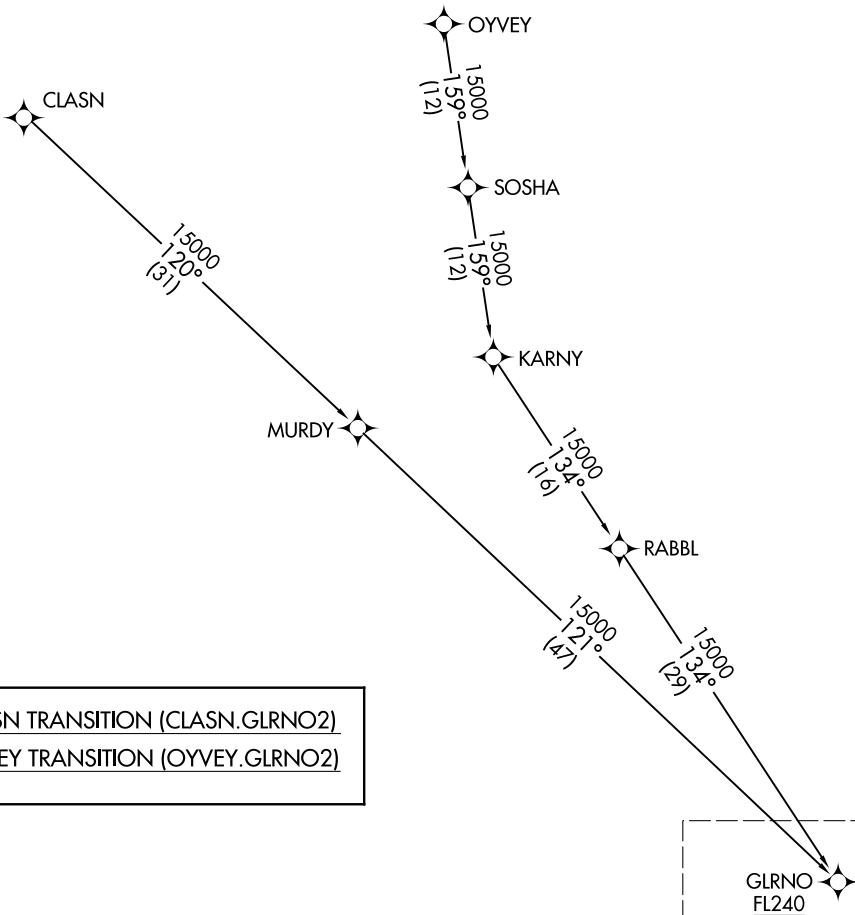


NOTE: RADAR required.
NOTE: RNAV 1.
NOTE: DME/DME/IRU or GPS required.
NOTE: Turbojet and turboprop aircraft only.
NOTE: Expect Rwy 26L unless otherwise assigned by ATC.
NOTE: Expect local area altimeter reaching FL200.

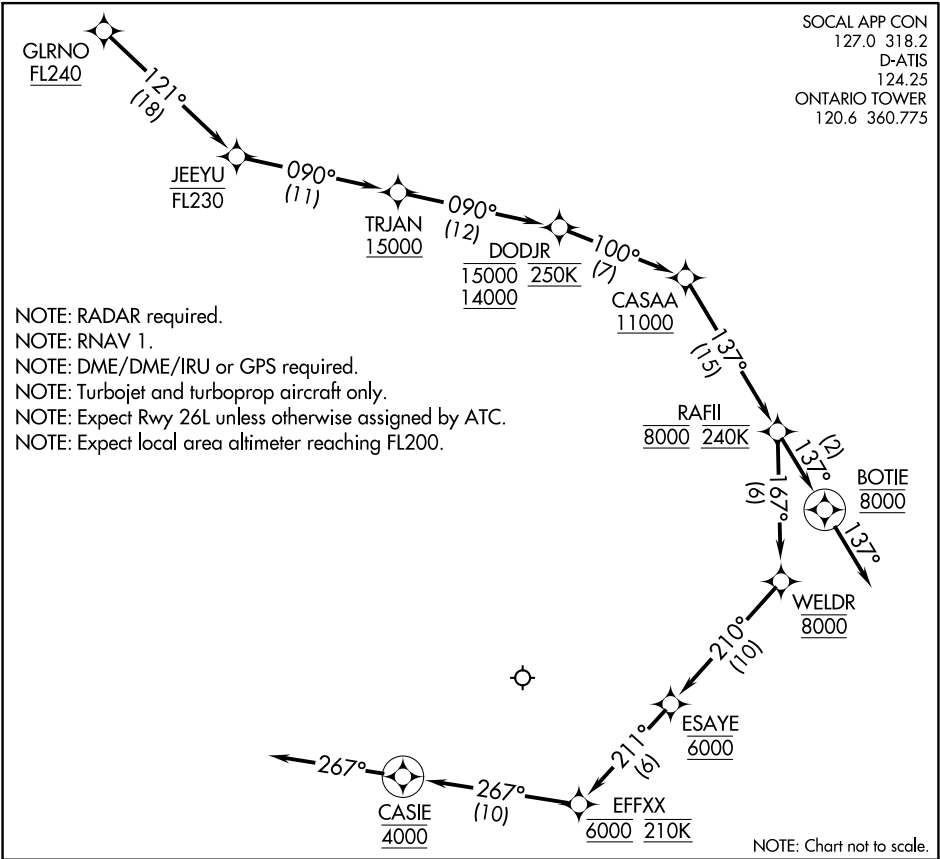
SOCAL APP CON
127.0 318.2
D-ATIS
124.25
ONTARIO TOWER
120.6 360.775



CLASN TRANSITION (CLASN.GLRNO2)
OYVEY TRANSITION (OYVEY.GLRNO2)

NOTE: Chart not to scale. (CONTINUED ON FOLLOWING PAGE)

See following page
for arrival routes.



ARRIVAL ROUTE DESCRIPTION

From GLRNO on track 121° to cross JEEYU at or below FL230, then on track 090° to cross TRJAN at or above 15000, then on track 090° to cross DODJR between 14000 and 15000 and at 250K, then on track 100° to cross CASAA at or above 11000, then on track 137° to cross RAFII at 8000 and at 240K.

LANDING RUNWAYS 8L/R: From RAFII on track 167° to cross WELDR at 8000, then on track 210° to cross ESAYE at 6000, then on track 211° to cross EFFXX at 6000 and at 210K, then on track 267° to cross CASIE at 4000, then on track 267°. Expect RNAV (RNP) Z RWY 8L approach or RADAR vectors to final approach course.

LANDING RUNWAYS 26L/R: From RAFII on track 137° to cross BOTIE at 8000, then on track 137°. Expect RNAV (RNP) Z RWY 26L or RADAR vectors to final approach course.

LOST COMMUNICATIONS

LANDING WEST: Proceed on the RNAV (RNP) Z RWY 26L approach.

LANDING EAST: Proceed on the RNAV (RNP) Z RWY 8L approach.