

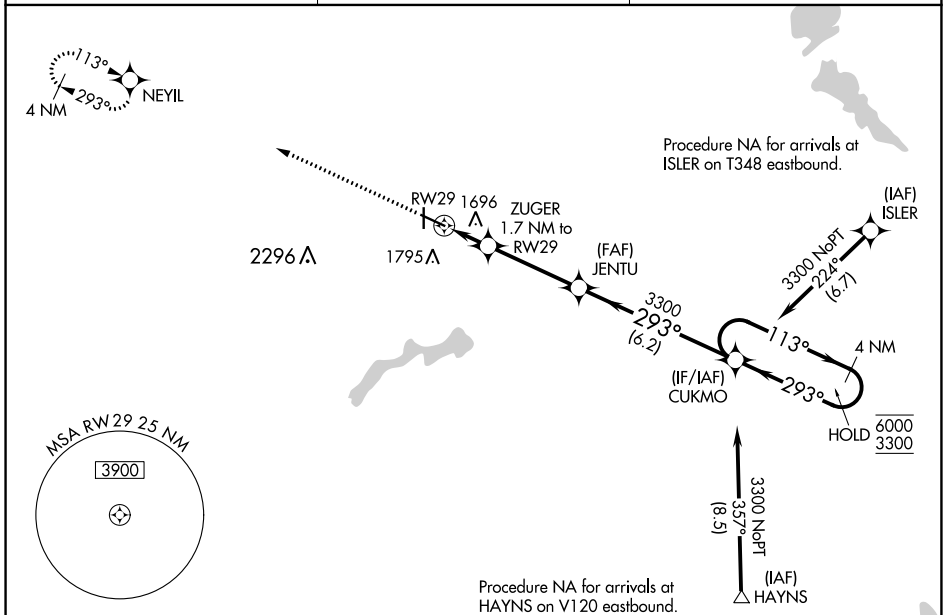
WAAS CH 45930 W29A	APP CRS 293°	Rwy Idg TDZE Apt Elev	5500 1570 1574
--	------------------------	-----------------------------	---

RNAV (GPS) RWY 29

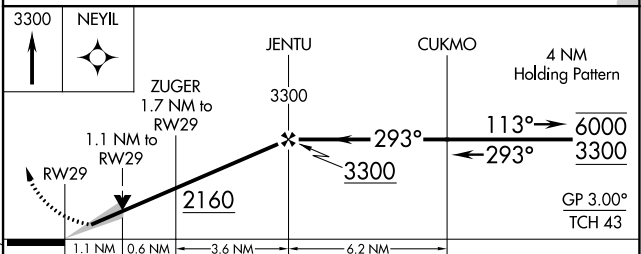
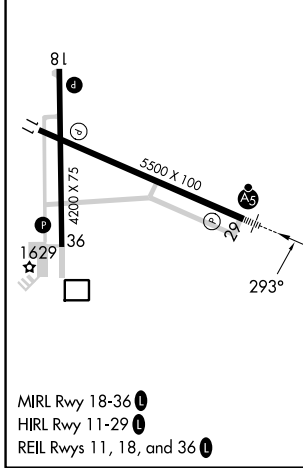
WORTHINGTON MUNI (OTG)

RNP APCH-GPS.	MALSRL 	MISSED APPROACH: Climb to 3300 direct NEYIL and hold.
<p> For uncompensated Baro-VNAV systems, LNAV/VNAV NA below -23°C or above 54°C. For inop ALS, increase LNAV/VNAV all Cats visibility to 7/8 SM.</p>		

AWOS-3PT 121.075	MINNEAPOLIS CENTER 132.05 317.4	UNICOM 122.8 (CTAF) 0
----------------------------	---	---------------------------------



ELEV 1574	TDZE 1570
-----------	-----------



CATEGORY	A	B	C	D
LPV DA		1770-1/2	200 (200-1/2)	
LNAV/VNAV DA		1867-1/2	297 (300-1/2)	
LNAV MDA	1960-1/2	390 (400-1/2)	1960-5/8	390 (400-5/8)
CIRCLING	2100-1	526 (600-1)	2100-1 1/2 526 (600-1 1/2)	2320-2 1/2 746 (800-2 1/2)

NC-1, 22 FEB 2024 to 21 MAR 2024

NC-1, 22 FEB 2024 to 21 MAR 2024