

CAMARILLO SIX DEPARTURE

SW-3, 22 FEB 2024 to 21 MAR 2024

TAKEOFF MINIMUMS
 Rwy 7: 2000-5 or Standard with minimum climb of 320' per NM to 4100.
 Rwy 25: 2100-5 or Standard with a minimum climb of 300' per NM to 4100.

TAKEOFF OBSTACLE NOTES

Rwy 7: Tree 527' from DER, 501' left of centerline, 59' AGL/108' MSL.

NOTE: Aircraft proceeding on FILLMORE TRANSITION- If not at MCA/MEA prior to reaching FIM VORTAC, continue climbing in depicted holding pattern to MCA or assigned altitude.
NOTE: RADAR required.

TOP ALTITUDE:
8000

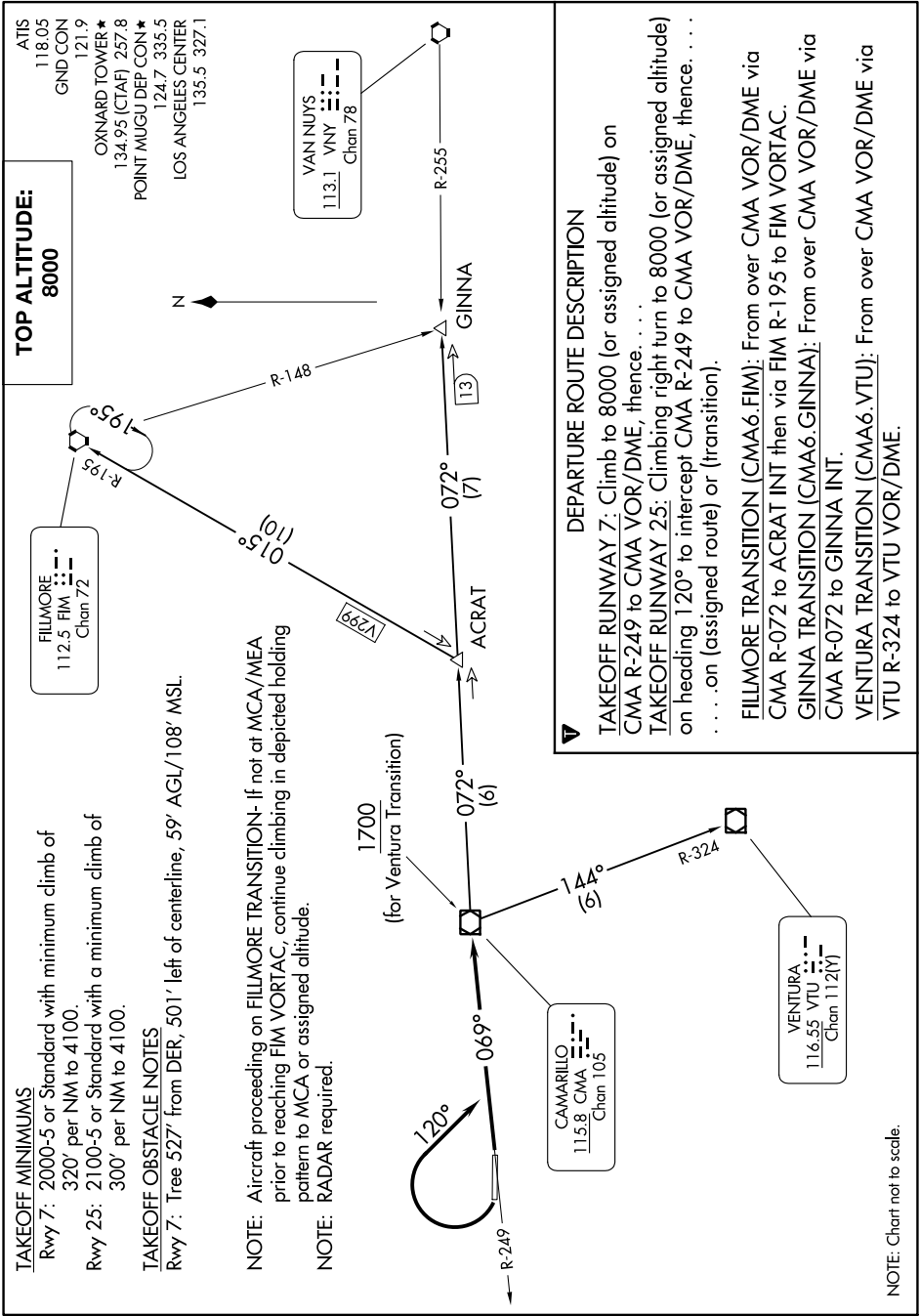
ATIS 118.05
 GND CON 121.9
 OXNARD TOWER ★ 134.95 (CTAF) 257.8
 POINT MUGU DEP CON ★ 124.7 335.5
 LOS ANGELES CENTER 135.5 327.1

VAN NUYS
 113.1 VNY ---
 Chan 78

FILLMORE
 112.5 FIM ---
 Chan 72

CAMARILLO
 115.8 CMA ---
 Chan 105

VENTURA
 116.55 VTU ---
 Chan 112(Y)



DEPARTURE ROUTE DESCRIPTION

TAKEOFF RUNWAY 7: Climb to 8000 (or assigned altitude) on CMA R-249 to CMA VOR/DME, thence. . . .
TAKEOFF RUNWAY 25: Climbing right turn to 8000 (or assigned altitude) on heading 120° to intercept CMA R-249 to CMA VOR/DME, thence. . . . on (assigned route) or (transition).
FILLMORE TRANSITION (CMA6.FIM): From over CMA VOR/DME via CMA R-072 to ACRA INT then via FIM R-195 to FIM VORTAC.
GINNA TRANSITION (CMA6.GINNA): From over CMA VOR/DME via CMA R-072 to GINNA INT.
VENTURA TRANSITION (CMA6.VTU): From over CMA VOR/DME via VTU R-324 to VTU VOR/DME.

NOTE: Chart not to scale.

SW-3, 22 FEB 2024 to 21 MAR 2024

CAMARILLO SIX DEPARTURE