

(CASEL7.CASEL) 18088

CASEL SEVEN DEPARTURE

AL-1195 (FAA)

MERLE K (MUDHOLE) SMITH (CDV)(PACV)

CORDOVA, ALASKA

ANCHORAGE CENTER
119.3 133.6 269.4
JUNEAU RADIO
122.2 123.6 (CTAF)
ASOS 134.8

**TOP ALTITUDE:
ASSIGNED BY ATC**

JOHNSTONE POINT
116.7 JOH
Chan 114

GLACIER RIVER
404 GCR

ORCA BAY
233 ALJ

MIDDLETON ISLAND
115.3 MDO
Chan 100

CASEL
N60°19.87'
W145°17.90'
L-1-3-4, H-1

CORVA
N60°16.94'
W145°14.86'
L-1-3-4

WEVIN
N60°08.50'
W145°06.12'
L-1-3

HUMPY
N60°07.11'
W145°00.24'
H-1

TAKEOFF MINIMUMS
Rwys 16, 34: NA - ATC
Rwys 9, 27: Standard.

NOTE: Do not exceed 210K until established
on 135° bearing from GCR NDB.
NOTE: ADF required.

NOTE: Chart not to scale.



DEPARTURE ROUTE DESCRIPTION

TAKEOFF RUNWAY 9: Climbing right turn to intercept bearing 135° from GCR NDB to CASEL INT, Thence. . . .

TAKEOFF RUNWAY 27: Climbing left turn to intercept bearing 135° from GCR NDB to CASEL INT, Thence. . . .

. . . .on assigned route, maintain ATC assigned altitude.

CASEL SEVEN DEPARTURE

(CASEL7.CASEL) 29MAR18

CORDOVA, ALASKA

MERLE K (MUDHOLE) SMITH (CDV)(PACV)

AK, 05 NOV 2020 to 31 DEC 2020

AK, 05 NOV 2020 to 31 DEC 2020

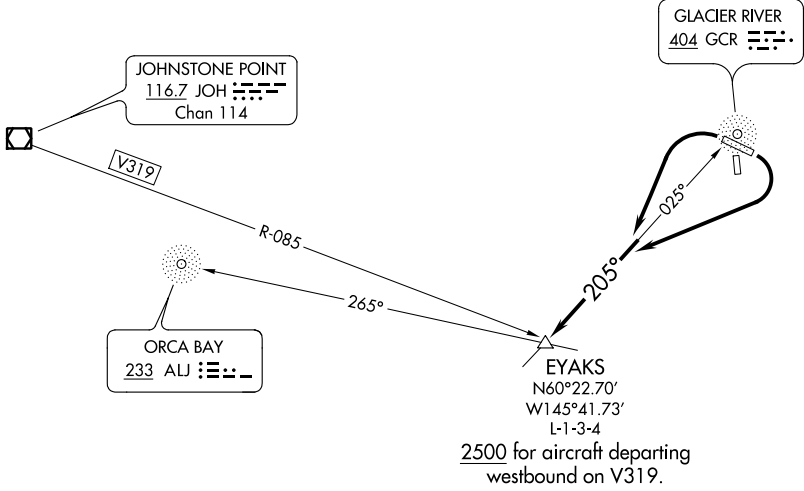
(EYAKS6.EYAKS) 18088

EYAKS SIX DEPARTURE

AL-1195 (FAA) MERLE K (MUDHOLE) SMITH (CDV)(PACV)
CORDOVA, ALASKA

ANCHORAGE CENTER
119.3 133.6 269.4
JUNEAU RADIO
122.2 123.6 (CTAF)
ASOS
134.8

**TOP ALTITUDE:
ASSIGNED BY ATC**



TAKEOFF MINIMUMS
Rwys 16, 34: NA-ATC.
Rwys 9, 27: Standard.

NOTE: Do not exceed 210K until established on 205° bearing from GCR NDB.
NOTE: ADF required.

NOTE: Chart not to scale.

DEPARTURE ROUTE DESCRIPTION

TAKEOFF RUNWAY 9: Climbing right turn to intercept bearing 205° from GCR NDB to EYAKS INT, thence. . . .

TAKEOFF RUNWAY 27: Climbing left turn to intercept bearing 205° from GCR NDB to EYAKS INT, thence. . . .

. . . .on assigned route, maintain ATC assigned altitude.

EYAKS SIX DEPARTURE
(EYAKS6.EYAKS) 29MARI8

CORDOVA, ALASKA
MERLE K (MUDHOLE) SMITH (CDV)(PACV)

AK, 05 NOV 2020 to 31 DEC 2020

AK, 05 NOV 2020 to 31 DEC 2020