

UTOPIA CREEK, ALASKA

NDB Rwy 24

21995

NDB/DME UTO 272 Chan 22 (V)	APCH CRS 252°	Rwy Idg TDZE Appt Elev 4100 1161 1261
---	-------------------------	---

AL-2335 (USAF)

INDIAN MOUNTAIN LRRS (PAIN)

▼ Night operations not authorized.

MISSSED APPROACH: Climb to 5000, then climbing left turn to 6600 direct UTO NDB and hold. Continue climb climb-in-hold to 6600.

ANCHORAGE CENTER APP/DEP CON
124.6 352.0

RCO (FAIRBANKS)
122.6

CIATF
126.2

AWOS-3

CAUTION: Rwy located on a slope of a 341.5' mountain with W end at the base of cliff, APPROACH ONLY FROM THE EAST.

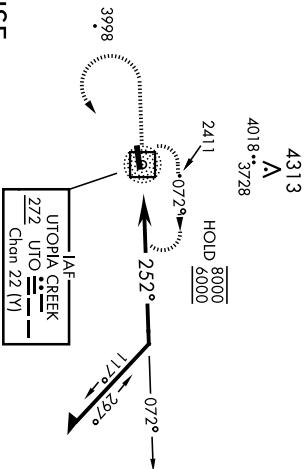
CAUTION: Terrain, 982' MSL, 200' from hld, 872' left of course.

Successful go around improbable if initiated post MAP.

Uncontrolled Airspace below 700' AGL within 4 NM of Indian Mountain airport.

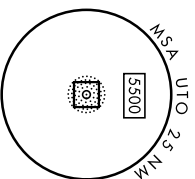
Visibility reduction by helicopters NA.

PAPI Beyond 8° right of RCL unusable.



**MILITARY CERTIFIED
AIRCREWS or AUTHORIZED
CONTRACT AIRCRAFT ONLY**

NOT FOR CIVIL USE

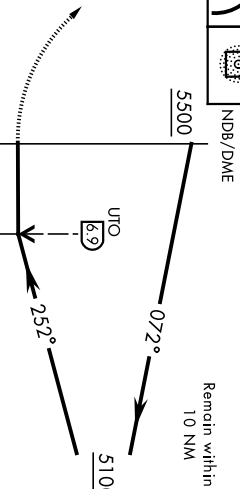


EMERG SAFE ALT 100 NM 10,100

5000	6600	UTO	ELEV 1261	TDZE 1161
------	------	-----	-----------	-----------

Land Rwy 24
Take-off Rwy 6

2.52° to
NDB/DME



CATEGORY	A	B	C	D
S-24	3940-1¼ 2779 (2700-1¼)	3940-1½ 2779 (2700-1½)	3940-3	2779 (2700-3)

☐ CIRCLING NOT AUTHORIZED

REIL Rwy 24

UTOPIA CREEK, ALASKA

66°00'N-153°42'W

INDIAN MOUNTAIN LRRS (PAIN)

Amch 3 14JUL22

NDB Rwy 24

RNAV (GPS) RWY 24

AL-2335 (USAF)

INDIAN MOUNTAIN LRRS (PAIM)

APCH CRS 243°	Rwy Idg TDZE Arprt Elev	4100 1161 1261
-------------------------	-------------------------------	---

⚠ MISSED APPROACH: Climbing left turn to 7000 direct CHAZY and hold. Continue climb in hold to 7000.

ANCHORAGE CENTER 124.6 352.0	CTAF 126.2	FAIRBANKS RADIO 122.6
--	----------------------	---------------------------------

CAUTION: Terrain 960 ft MSL, 200 ft from threshold, 200 ft left of course.
Night operations not authorized.
DME/DME RNP -0.3 NA
Uncontrolled airspace below 700' AGL within 4 NM of Indian Mountain airport.

AWOS-3

NOT FOR CIVIL USE

4313

2003 RW24

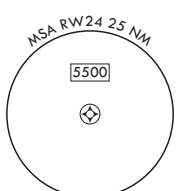
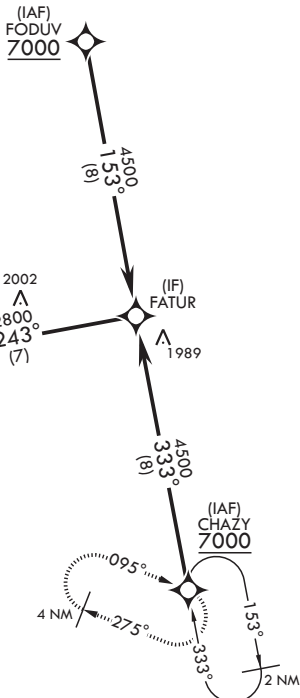
(FAF) DARTN

2002
2800
243°
(7)

(IF) FATUR

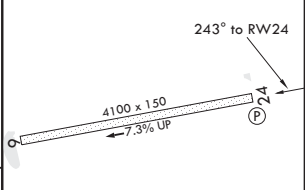
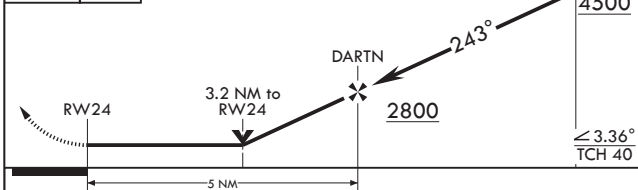
1989

MILITARY CERTIFIED AIRCREWS OR AUTHORIZED CONTRACT AIRCRAFT ONLY



EMERG SAFE ALT 100 NM 10,100

7000 CHAZY	VGSI and descent angles not coincident (VGSI angle 4.00/TCH 40).	PAPI beyond 8° right of RCL unusable.	FATUR	ELEV 1261	TDZE 1161
------------	--	---------------------------------------	-------	-----------	-----------



CAT	A	B	C	D
LNVA MDA	2360-1¼ 1199 (1100-1¼)	2360-1½ 1199 (1100-1½)	NA	NA
CIRCLING	NOT AUTHORIZED			

REIL Rwy 24

RNAV (GPS) RWY 24

AK, 25 JAN 2024 to 21 MAR 2024

AK, 25 JAN 2024 to 21 MAR 2024