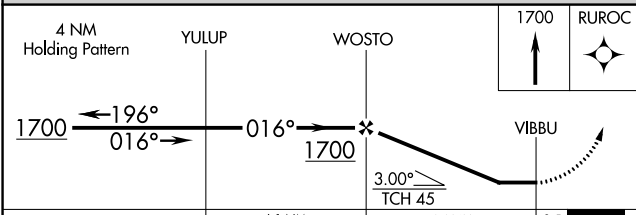
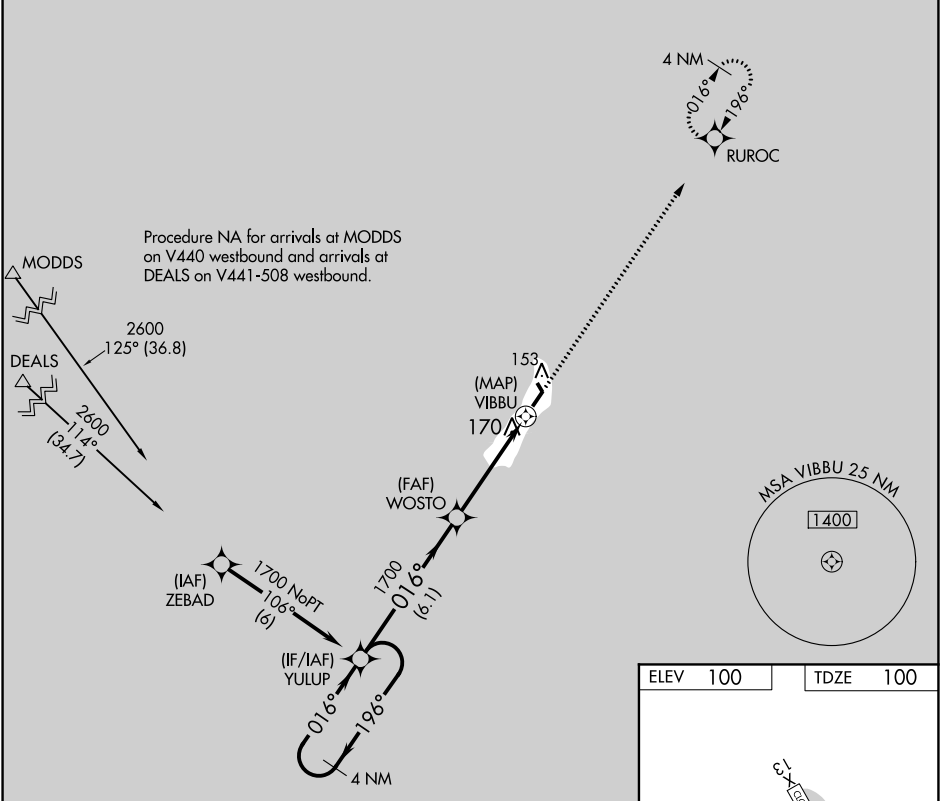


WAAS CH 86427 W02A	APP CRS 016°	Rwy Idg TDZE Apt Elev	3158 100 100
--	------------------------	-----------------------------	---

RNAV (GPS) RWY 2

MIDDLETON ISLAND (MDO) (P.A.M.D)

<p>▼ DME/DME RNP-0.3 NA Procedure NA at night. Helicopter visibility reduction below 1 SM NA.</p>		<p>MISSED APPROACH: Climb to 1700 direct RUROC and hold.</p>	
AWOS-3P 135.725	ANCHORAGE CENTER 133.6 269.4	JUNEAU RADIO 122.05	CTAF 122.9



ELEV 100	TDZE 100
----------	----------

119±

1500 X 125

20

3156 X 115

CATEGORY	A	B	C	D
LP MDA	560-1	460 (500-1)	560-1 ³ / ₈ 460 (500-1 ³ / ₈)	NA
LNAV MDA	580-1	480 (500-1)	580-1 ³ / ₈ 480 (500-1 ³ / ₈)	NA
CIRCLING	600-1	500 (500-1)	600-1 ¹ / ₂ 500 (500-1 ¹ / ₂)	NA

AK, 25 FEB 2021 to 22 APR 2021

AK, 25 FEB 2021 to 22 APR 2021

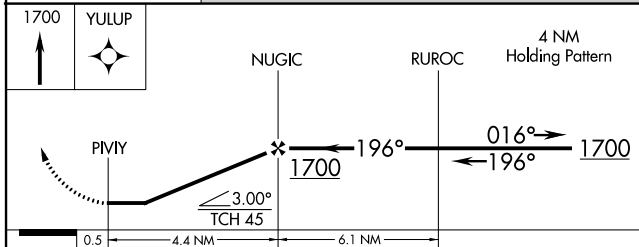
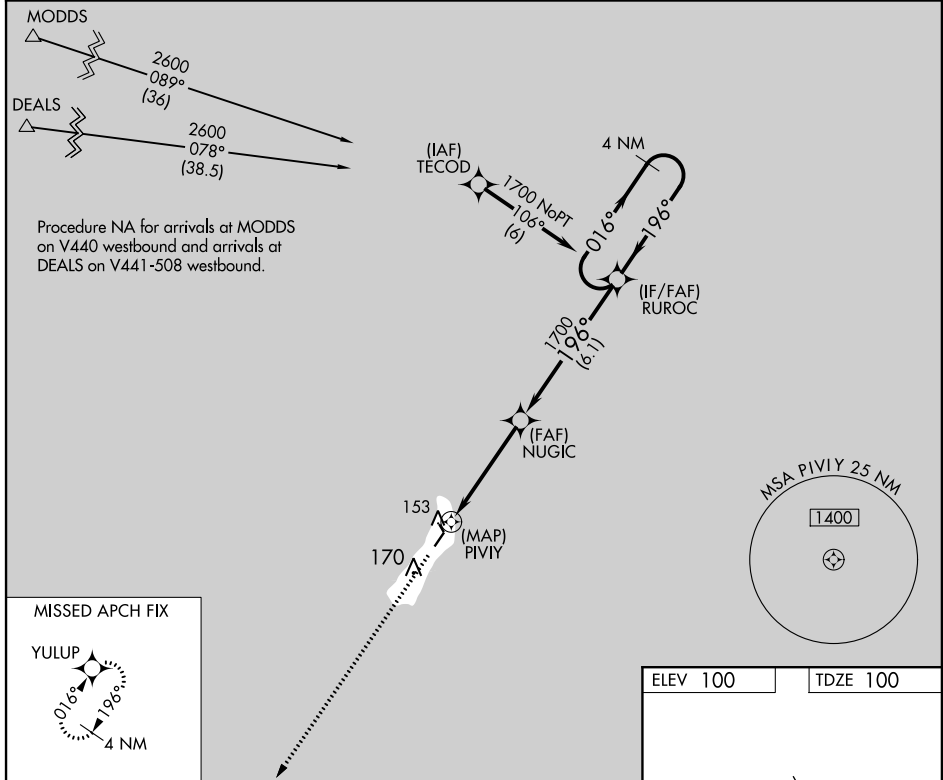
WAAS CH 42627 W20A	APP CRS 196°	Rwy Idg TDZE Apt Elev	3158 100 100
--	------------------------	-----------------------------	---

RNAV (GPS) RWY 20

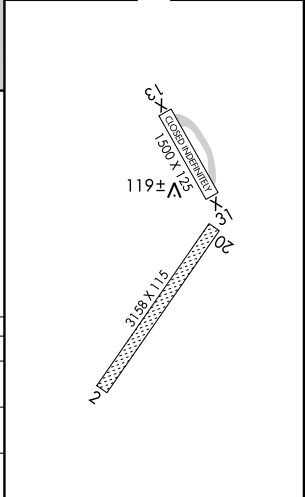
MIDDLETON ISLAND (MDO) (PAMD)

▼ DME/DME RNP-0.3 NA. Procedure NA at night. Helicopter visibility reduction below 1 SM NA. MISSED APPROACH: Climb to 1700 direct YULUP and hold.

AWOS-3P 135.725	ANCHORAGE CENTER 133.6 269.4	JUNEAU RADIO 122.05	CTAF 122.9
---------------------------	--	-------------------------------	----------------------



ELEV 100	TDZE 100
----------	----------



CATEGORY	A	B	C	D
LP MDA	420-1 320 (400-1)			NA
LNAV MDA	660-1	560 (600-1)	660-1½ 560 (600-1½)	NA
CIRCLING	660-1	560 (600-1)	660-1½ 560 (600-1½)	NA

AK, 25 FEB 2021 to 22 APR 2021

AK, 25 FEB 2021 to 22 APR 2021

VOR/DME MDO 115.3 Chan 100	APP CRS 022°	Rwy Idg 3158 TDZE 100 Apt Elev 100
--	------------------------	---

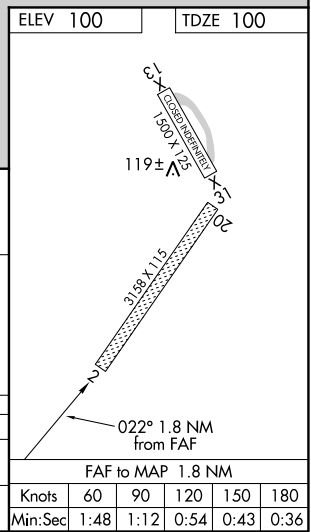
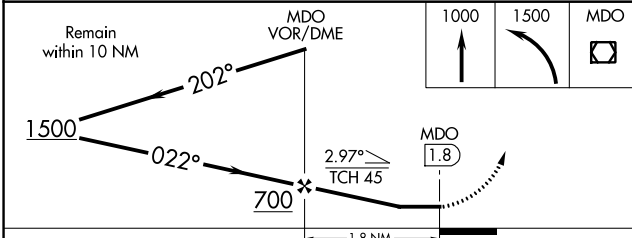
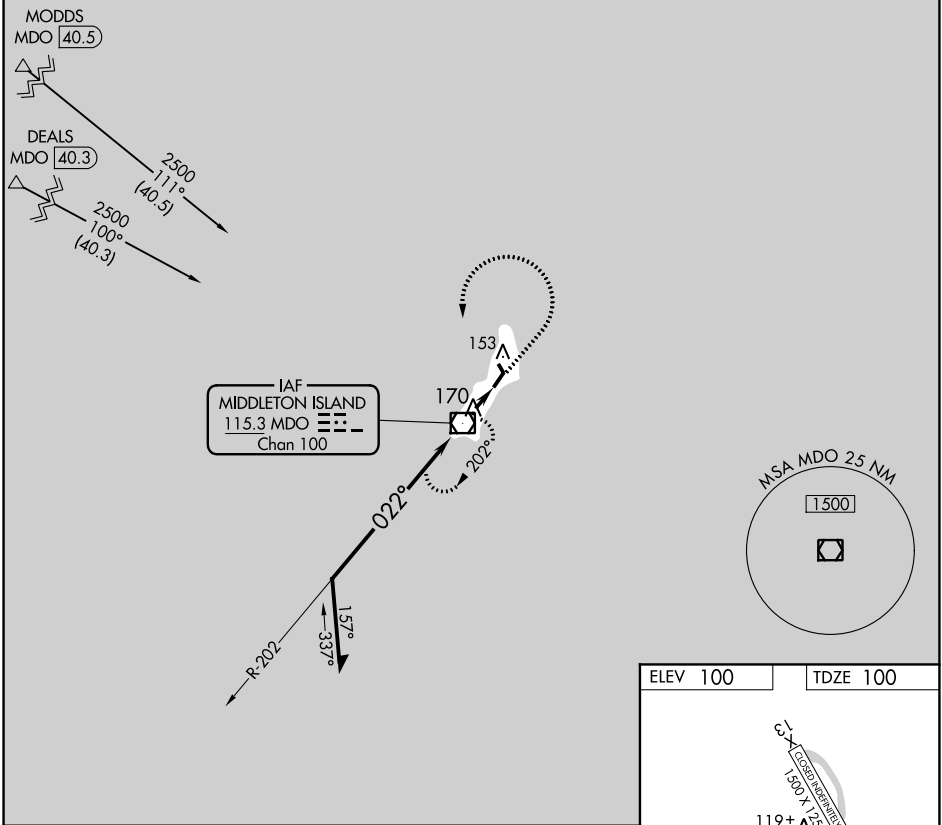
VOR RWY 2

MIDDLETON ISLAND (MDO) (PAMD)

▼ When local altimeter setting not received, procedure NA.
Procedure NA at night.
Helicopter visibility reduction below 1 SM NA.

MISSED APPROACH: Climb to 1000 then climbing left turn to 1500 direct MDO VOR/DME and hold.

AWOS-3P 135.725	ANCHORAGE CENTER 133.6 269.4	JUNEAU RADIO 122.05	CTAF 122.9
---------------------------	--	-------------------------------	----------------------



CATEGORY	A	B	C	D
S-2	560-1	460 (500-1)	560-1 ³ / ₈ 460 (500-1 ³ / ₈)	NA
CIRCLING	600-1	500 (500-1)	600-1 ¹ / ₂ 500 (500-1 ¹ / ₂)	NA

AK, 25 FEB 2021 to 22 APR 2021

AK, 25 FEB 2021 to 22 APR 2021