

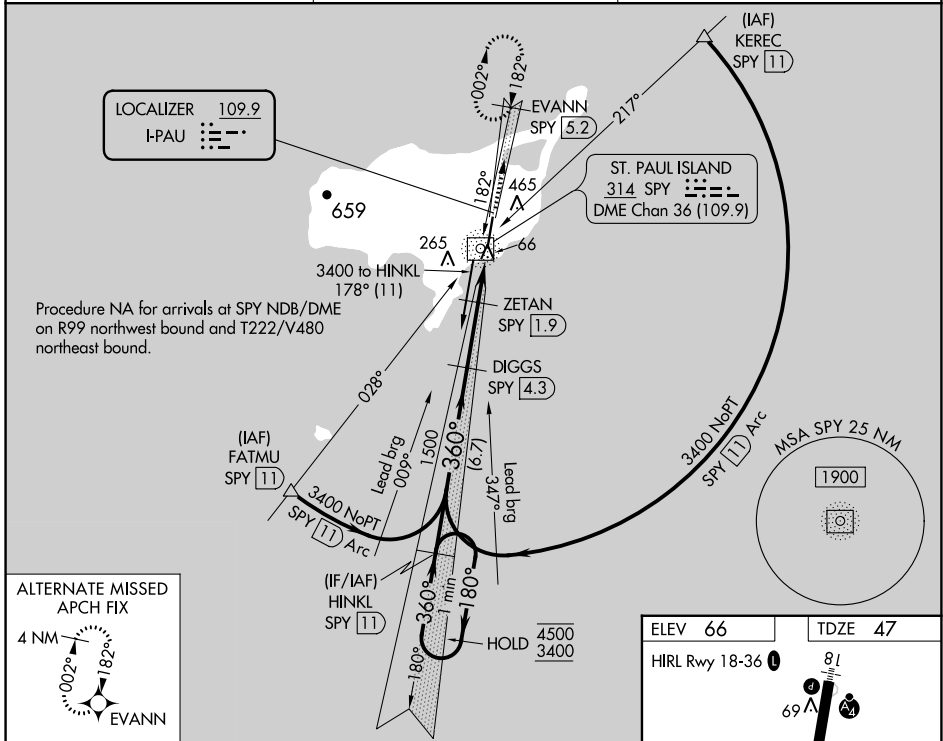
LOC I-PAU 109.9	APP CRS 360°	Rwy Idg TDZE Apt Elev 6500 47 66
---------------------------	------------------------	--

ILS or LOC RWY 36

ST PAUL ISLAND (SNP) (PASN)

ADF and DME required for procedure entry. DME required.		MALSF	MISSED APPROACH: Climb to 2700 on I-PAU north course (360°) to EVANN/SPY 5.2 DME and hold, continue climb-in-hold to 2700.
<p>▼ Circling NA west of Rwy 18-36. Inop table does not apply to S-ILS.</p> <p>▲ When local altimeter setting not received, procedure NA. DME from SPY NDB/DME. Simultaneous reception of I-PAU and SPY DME required.</p>			

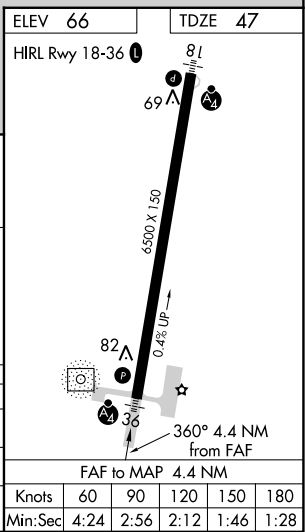
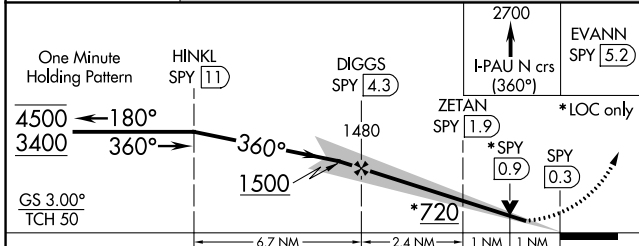
ASOS 135.75	ANCHORAGE CENTER 119.1 339.8	CTAF 122.3
-----------------------	--	----------------------



Procedure NA for arrivals at SPY NDB/DME on R99 northwest bound and T222/V480 northeast bound.

LOCALIZER 109.9
I-PAU

ALTERNATE MISSED APCH FIX
4 NM



CATEGORY	A	B	C	D
S-ILS 36		247- ³ / ₄	200 (200- ³ / ₄)	
S-LOC 36		380- ³ / ₄	333 (400- ³ / ₄)	
C CIRCLING	800-1	734 (800-1)	800-2 734 (800-2)	800-2 ¹ / ₄ 734 (800-2 ¹ / ₄)

LOC I-PAU 109.9	APP CRS 180°	Rwy ldg 6500
		TDZE 66
		Apt Elev 66

LOC/DME BC RWY 18

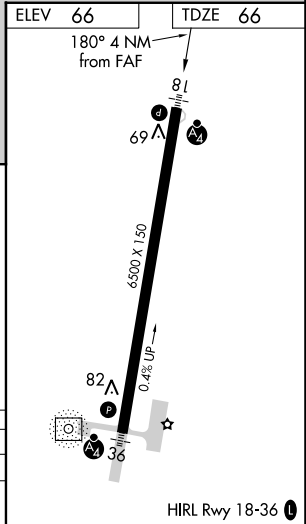
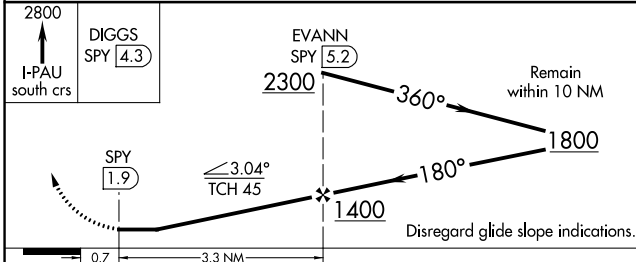
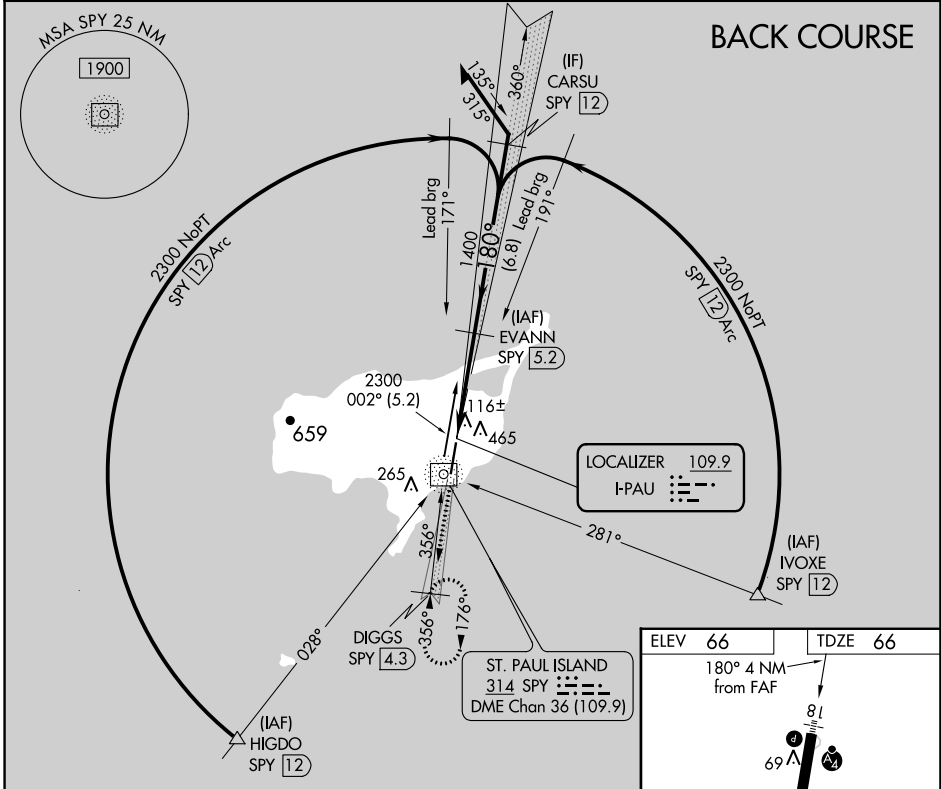
ST PAUL ISLAND (SNP) (PASN)

▼ Inoperative table does not apply. Circling NA west of Rwy 18-36. Rwy 18 helicopter visibility reduction below 1 SM NA. DME from SPY NDB/DME. Simultaneous reception of I-PAU and SPY DME required.



MISSED APPROACH: Climb to 2800 via I-PAU south course to DIGGS/SPY 4.3 DME and hold, continue climb-in-hold to 2800.

ASOS 135.75	ANCHORAGE CENTER 119.1 339.8	CTAF 122.3 0
-----------------------	--	------------------------



CATEGORY	A	B	C	D
S-18	580-1	514 (600-1)	580-1½	514 (600-1½)
CIRCLING	800-1	734 (800-1)	800-2	800-2¼
			734 (800-2)	734 (800-2¼)

AK, 25 JAN 2024 to 21 MAR 2024

AK, 25 JAN 2024 to 21 MAR 2024

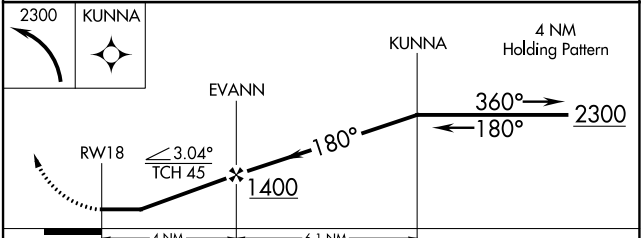
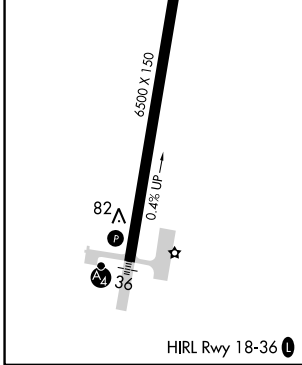
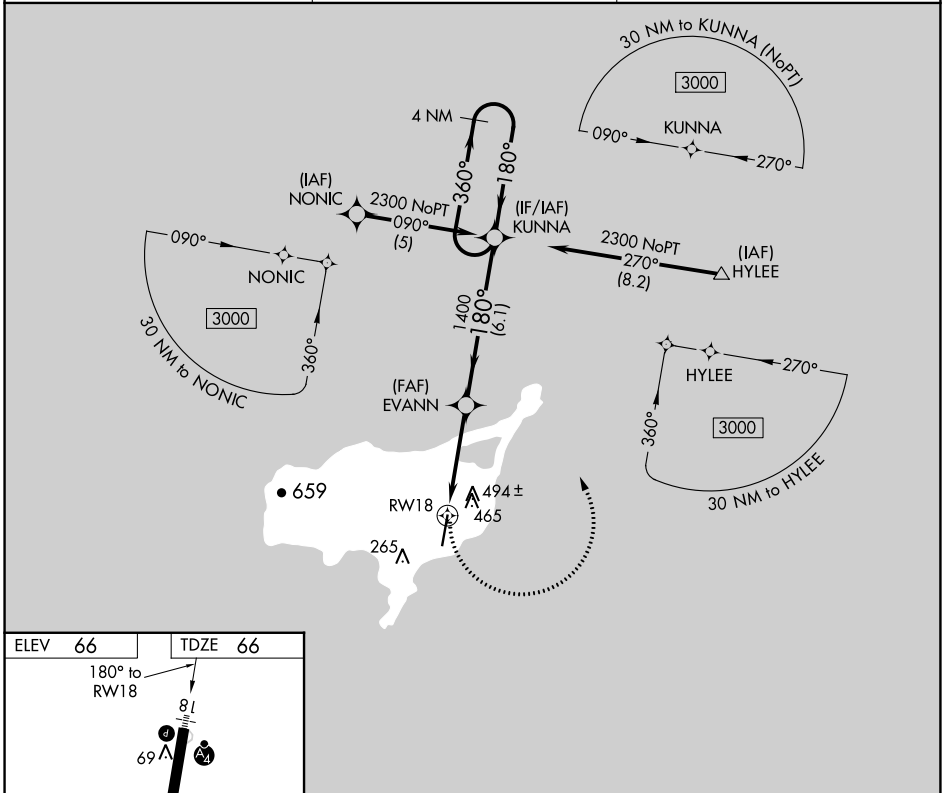
APP CRS	Rwy ldg	6500
180°	TDZE	66
	Apt Elev	66

RNAV (GPS) RWY 18

ST PAUL ISLAND (SNP) (PASN)

RNP APCH.	MALSF	MISSED APPROACH: Climbing left turn to 2300 direct KUNNA and hold.
<p>▼ Inoperative table does not apply.</p> <p>▲ Circling NA west of Rwy 18-36.</p> <p>Rwy 18 helicopter visibility reduction below 1 SM NA.</p>		

ASOS 135.75	ANCHORAGE CENTER 119.1 339.8	CTAF 122.3
-----------------------	--	----------------------



CATEGORY	A	B	C	D
LNAV MDA	740-1	674 (700-1)	740-1¾ 674 (700-1¾)	740-2 674 (700-2)
CIRCLING	800-1	734 (800-1)	800-2 734 (800-2)	800-2¼ 734 (800-2¼)

AK, 25 JAN 2024 to 21 MAR 2024

AK, 25 JAN 2024 to 21 MAR 2024

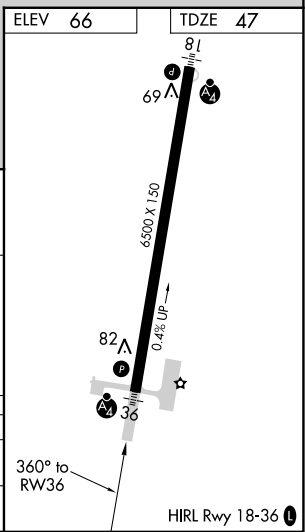
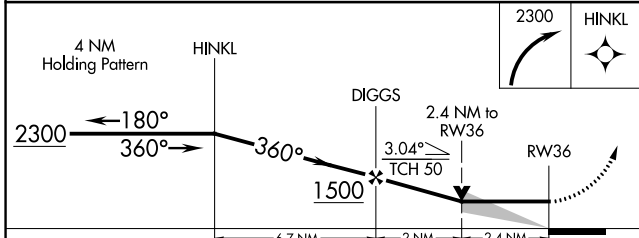
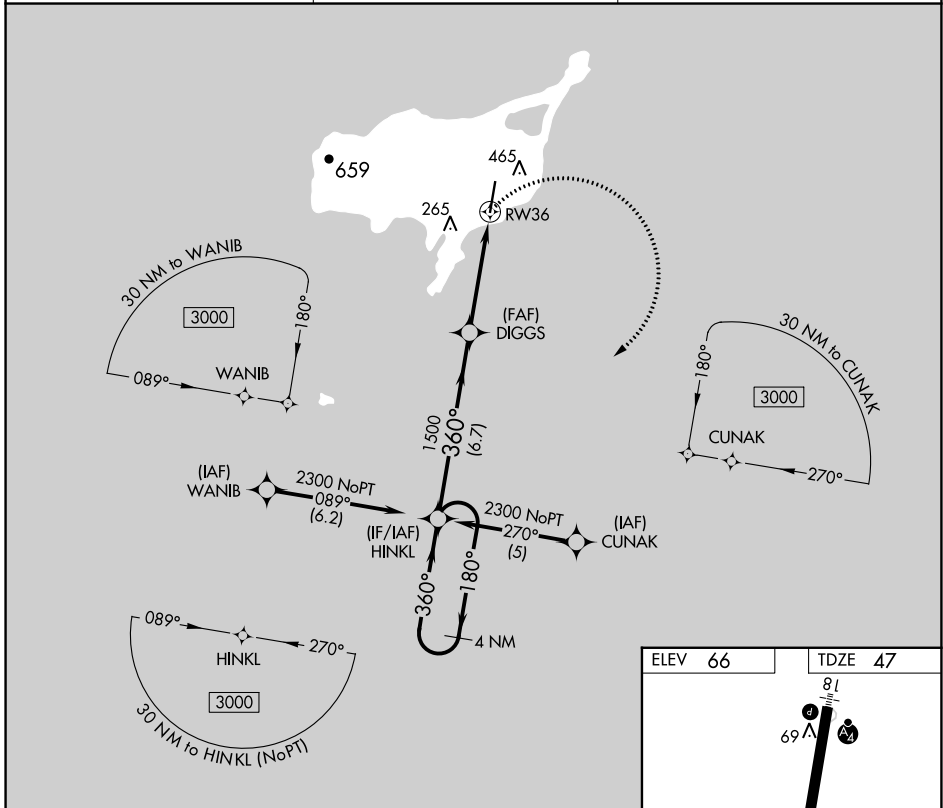
APP CRS 360°	Rwy Idg 6500
	TDZE 47
	Apt Elev 66

RNAV (GPS) RWY 36

ST PAUL ISLAND (SNP) (PASN)

RNP APCH.	MALSF	MISSED APPROACH: Climbing right turn to 2300 direct HINKL and hold.
<p>▼ Inoperative table does not apply.</p> <p>▲ Circling NA west of Rwy 18-36.</p>		

ASOS 135.75	ANCHORAGE CENTER 119.1 339.8	CTAF 122.3
-----------------------	--	----------------------



CATEGORY	A	B	C	D
LNVA MDA	840-1 793 (800-1)	840-1½ 793 (800-1½)	840-2¼ 793 (800-2¼)	840-2½ 793 (800-2½)
CIRCLING	840-1 774 (800-1)	840-1½ 774 (800-1½)	840-2¼ 774 (800-2¼)	840-2½ 774 (800-2½)

AK, 25 JAN 2024 to 21 MAR 2024

AK, 25 JAN 2024 to 21 MAR 2024