

AL-2332 [USAF]

SPARREVOHN (IRRS) (PASV)

NDB CRN <b>281</b>	APCH CRS <b>354°</b>	Rwy Idg TDZE Arpt Elev <b>4200</b> <b>1476</b> <b>1585</b>	AL-2332 [USAF]	MISSED APPROACH: Climb to 4200, then climbing right turn to 5500 direct CRN and hold. Continue climb and hold to 5500.	SPARREVOHN RADIO <b>126.2</b> (CTAF)	AWOS-3
ANCHORAGE CENTER <b>134.3 351.8</b>			KENAL RCO <b>122.5</b>		SPARREVOHN RADIO <b>126.2</b> (CTAF)	

CAUTION: Rwy surrounded by mountains. Rwy located on slope of 3236' mountain. Approach from S only, Land Rwy 34 only.

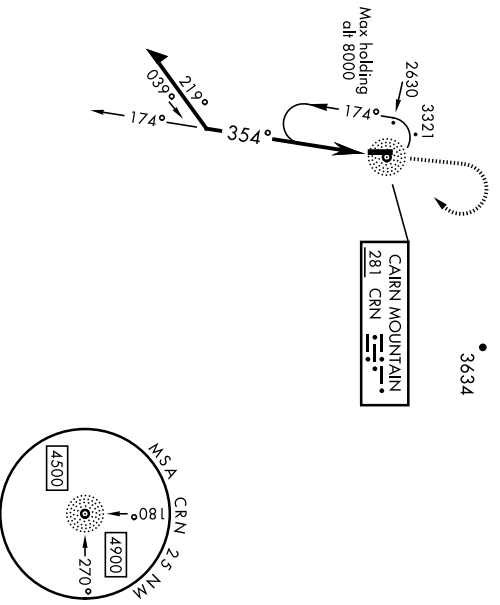
CAUTION: Terrain 1530' MSL, 2773' from thld, 1008' left of course.

Successful go-around improbable if initiated past the MAP

Uncontrolled Airspace below 700' AGL within 3 NM of Sparrevohn airport.

**MILITARY CERTIFIED  
AIRCRAFTS OR AUTHORIZED  
CONTRACT AIRCRAFT ONLY**

**NOT FOR CIVIL USE**

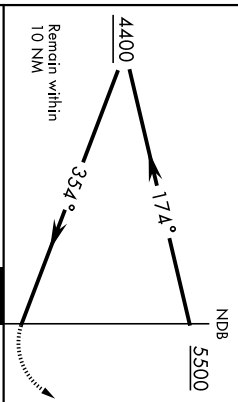


AK, 25 JAN 2024 to 21 MAR 2024

AK, 25 JAN 2024 to 21 MAR 2024

EMERG SAFE ALT 100 NM 13,500

CATEGORY	A	B	C	D	ELEV 1565 91	TDZE 1476	
	S-34	3580-1½ 2104 (2100-1½)	3580-1½ 2104 (2100-1½)	3580-3 2104 (2100-3)			
CIRCLING	NOT AUTHORIZED					REIL Rwy 34 34	Land Rwy 34 Tlof Rwy 16



# RNAV (GPS) RWY 34

AL-2332 [USAF]

SPARREVOHN LRSS (PASV)

<b>APCH CRS</b> <b>345°</b> Rwy Idg <b>TDZE 1476</b> Appr Elev <b>1565</b>	Night operations not authorized. Circling not authorized. DME/DME RNP-0.3 NA		MISSED APPROACH: Climbing right turn to 5500 direct LVMF and hold.	
	ANCHORAGE CENTER <b>134.3 351.8</b>	KENAI RCO <b>122.5</b>	UNICOM <b>126.2 (CTAF)</b>	AWOS-3

Visibility reduction by helicopters NA.

Uncontrolled airspace below  
700 AGL within 3 NM of  
Spartevohn Airport.

Procedure NA when MCA 1782  
(NAKNEK 2 MCA) is active unless  
coordination with Anchorage Center  
is completed.

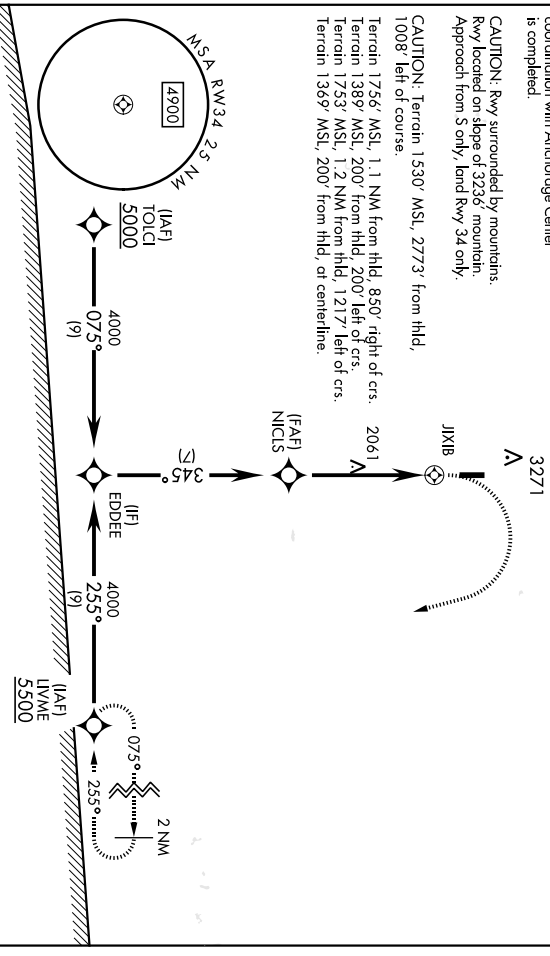
**CAUTION:** Rwy surrounded by mountains.  
Rwy located on slope of 3236' mountain.  
Approach from S only, land Rwy 34 only.

**CAUTION:** Terrain 1530' MSL, 2773' from thld,  
1008' left of course.

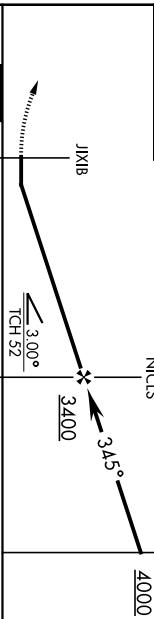
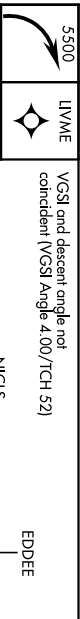
Terrain 1756' MSL, 1.1 NM from thld, 850' right of crs.  
Terrain 1389' MSL, 200' from thld, 200' left of crs.  
Terrain 1753' MSL, 1.2 NM from thld, 1217' left of crs.  
Terrain 1369' MSL, 200' from thld, at centerline.

**MILITARY CERTIFIED AIRCEW OR  
AUTHORIZED CONTRACT AIRCRAFT ONLY**

**NOT FOR CIVIL USE**



**EMERG SAFE ALT 100 NM 13,500 FROM JIXIB**

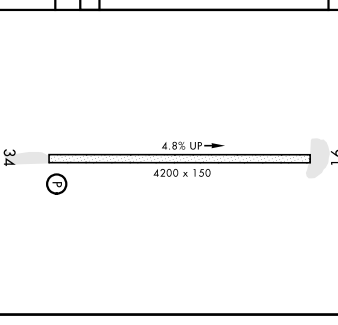


CATEGORY	A	B	C	D
----------	---	---	---	---

LNAV MDA	3080-1½ 1604 (1500-1¼)	3240-1½ 1764 (1700-1¼)	3320-3 1844 (1800-3)	
----------	---------------------------	---------------------------	-------------------------	--

CIRCLING NOT AUTHORIZED

ELEV	1565	TDZE	1476
Land Rwy 34 Thld Rwy 16	91		



# RNAV (GPS) RWY 34