

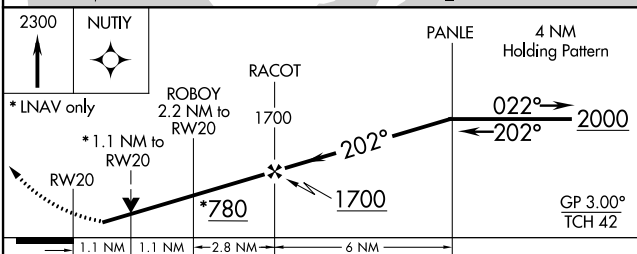
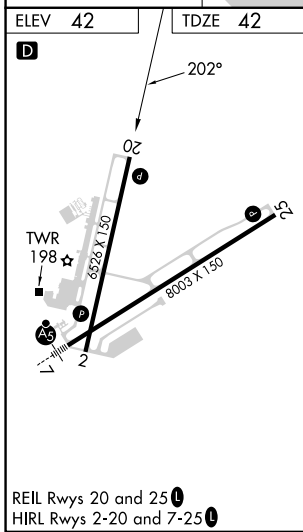
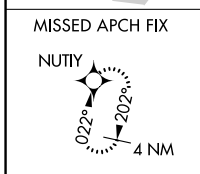
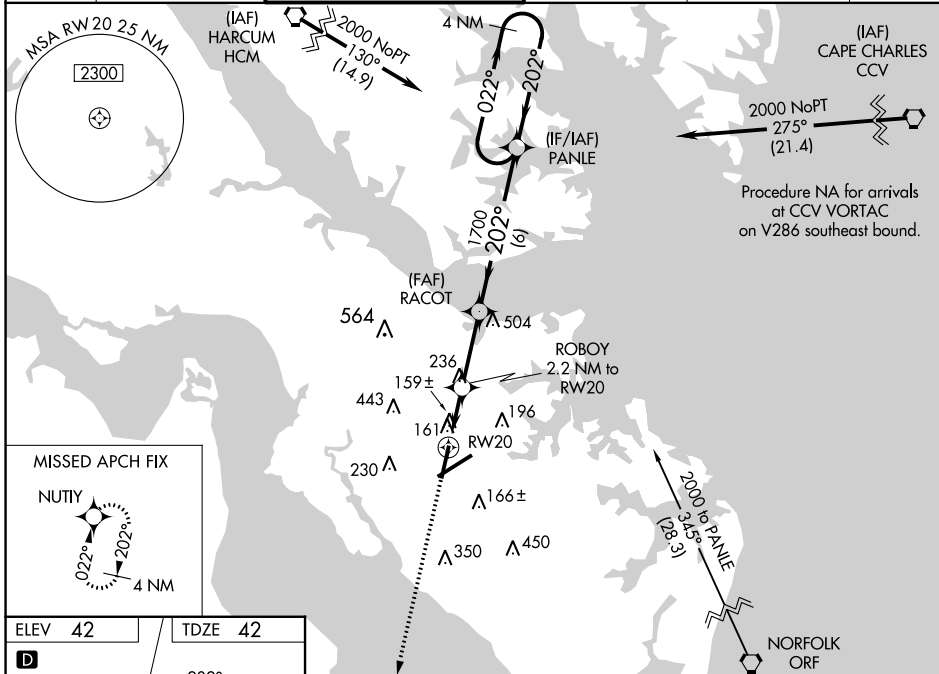
WAAS CH 97420 W20A	APP CRS 202°	Rwy Idg TDZE Apt Elev	6526 42 42
--	------------------------	-----------------------------	---------------------------------------

RNAV (GPS) RWY 20

NEWPORT NEWS/WILLIAMSBURG INTL (PHF)

RNP APCH.		MISSED APPROACH: Climb to 2300 direct NUTY and hold.			
<p>▼ For uncompensated Baro-VNAV systems, LNAV/VNAV NA below -11°C or above 54°C.</p> <p>▲ Rwy 20 helicopter visibility reduction below ¾ SM NA.</p>					

ATIS 128.65	NORFOLK APP CON 125.7 335.625	NEWPORT NEWS TOWER ★ 118.7(CTAF) 0 257.9	GND CON 121.9 348.6	CLNC DEL 121.65 225.4	UNICOM 122.95
-----------------------	---	--	-------------------------------	---------------------------------	-------------------------



CATEGORY	A	B	C	D
LPV DA	379-1⅛ 337 (400-1⅛)			
LNAV/VNAV DA	474-1½ 432 (500-1½)			
LNAV MDA	440-1	398 (400-1)	440-1⅛	398 (400-1⅛)
CIRCLING	520-1 478 (500-1)	540-1 498 (500-1)	760-2 718 (800-2)	780-2¼ 738 (800-2¼)

NE-3, 22 FEB 2024 to 21 MAR 2024

NE-3, 22 FEB 2024 to 21 MAR 2024