

LOC/DME I-LNY 111.1 Chan 48	APP CRS 033°	Rwy Idg TDZE Apt Elev	5000 1307 1308
---	------------------------	-----------------------------	---

ILS or LOC RWY 3

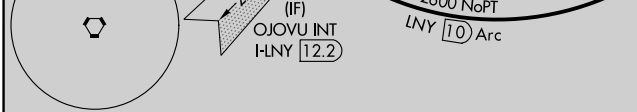
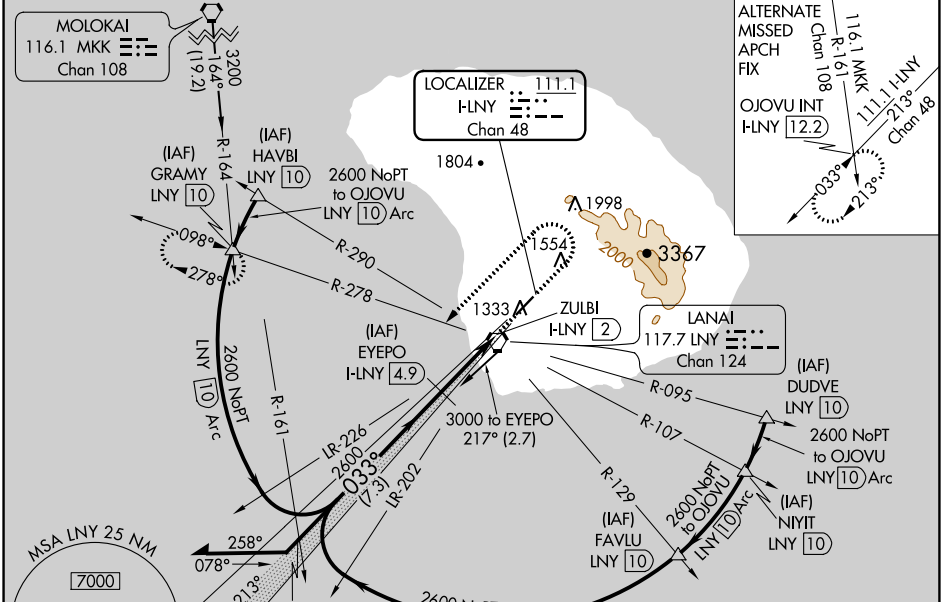
LANAI (LNY)(PHNY)

DME required.

NA Circling Rwy 21 NA at night. Autopilot coupled approach NA below 1505. When local altimeter setting not received, procedure NA, except for operators with approved weather reporting service. Circling NA for Cat C southeast of Rwy 3-21.

MISSED APPROACH: Climb to 1800 then climbing left turn to 3500 on heading 224° and LNY VORTAC R-278 to GRAMY INT/LNY VORTAC 10 DME and hold.

AWOS-3P 118.375	HCF CENTER 119.3 307.1	CTAF 122.9
---------------------------	----------------------------------	----------------------



VGSI and ILS glidepath not coincident EYEPO (VGSI Angle 3.00/TCH 49).

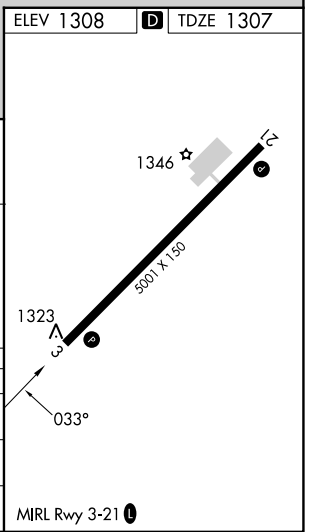
Remain within 10 NM

Use I-LNY DME when on the localizer course.

1800	3500	LNY R-278	GRAMY
↑	hdg 224°	△	

GS 3.00° TCH 52

2.9 NM 1 NM



CATEGORY	A	B	C	D
S-ILS 3		1588-1	281 (300-1)	
S-LOC 3		1580-1¼	273 (300-1¼)	
CIRCLING	1900-1¼ 592 (600-1¼)	1940-1¼ 632 (700-1¼)	2140-2½ 832 (900-2½)	NA

PAC, 25 JAN 2024 to 21 MAR 2024

PAC, 25 JAN 2024 to 21 MAR 2024

APP CRS	Rwy Idg	5000
033°	TDZE	1307
	Apt Elev	1308

RNAV (GPS) RWY 3

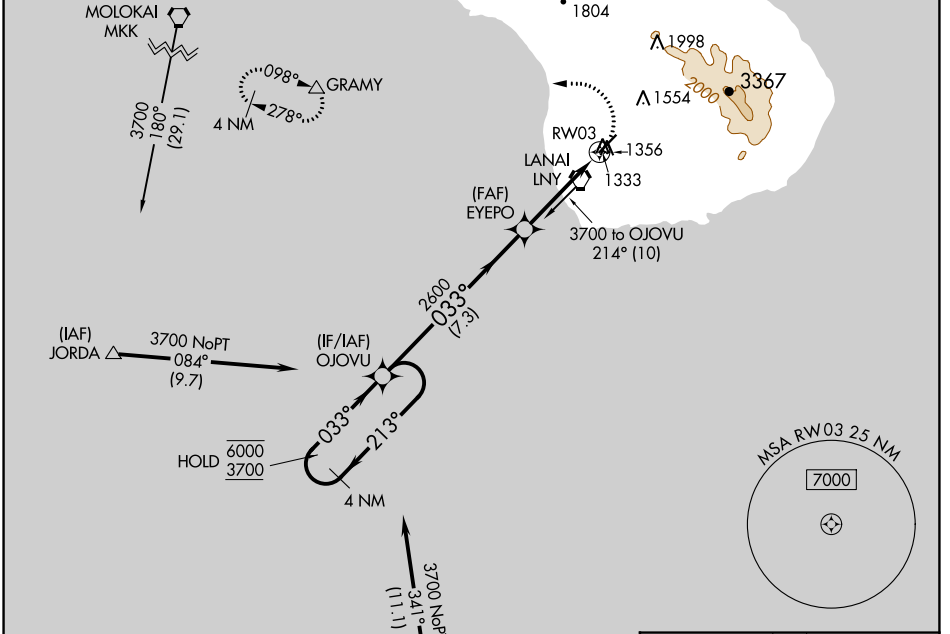
LANAI (LNY)(PHNY)

RNP APCH.

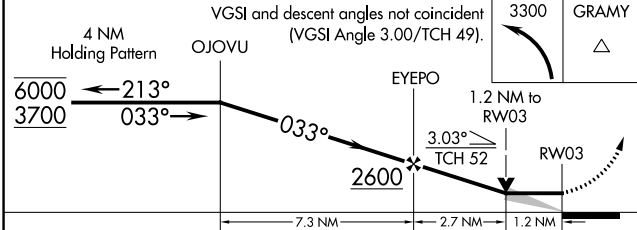
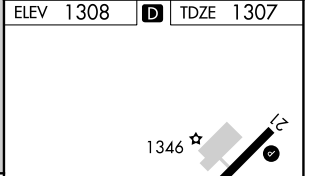
▼ Circling Rwy 21 NA at night. When local altimeter setting not received, procedure NA, except for operators with approved weather reporting service.
▲ Circling NA for Cat C southeast of Rwy 3-21.

MISSED APPROACH: Climbing left turn to 3300 direct GRAMY and hold.

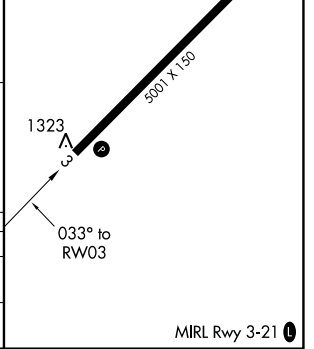
AWOS-3P 118.375	HCF CENTER 119.3 307.1	CTAF 122.9 ①
---------------------------	----------------------------------	-------------------------------



ELEV 1308	D	TDZE 1307
-----------	----------	-----------



CATEGORY	A	B	C	D
RNAV MDA	1720-1	413 (500-1)	1720-1¼	413 (500-1¼)
CIRCLING	1840-1 532 (600-1)	1900-1 592 (600-1)	2140-2½ 832 (900-2½)	NA



VORTAC LNY 117.7 Chan 124	APP CRS 025°	Rwy Idg TDZE Apt Elev	5000 1307 1308
---	------------------------	-----------------------------	---

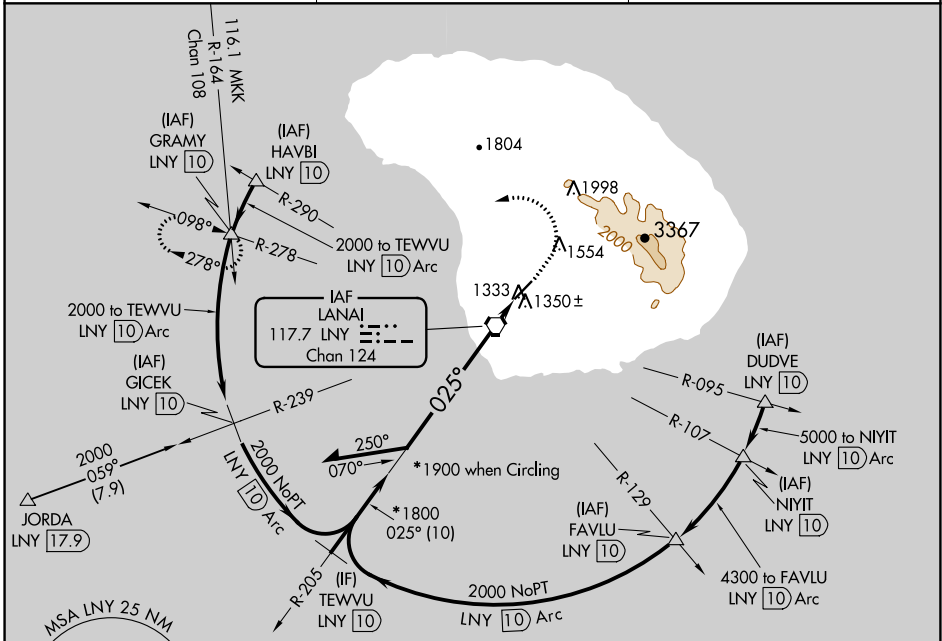
VOR or TACAN RWY 3

LANAI (LNY)(PHNY)

▼ Circling Rwy 21 NA at night.

MISSED APPROACH: Climb to 1720 then climbing left turn to 3300 via heading 240° and LNY VORTAC R-278 to GRAMY INT/LNY 10 DME and hold.

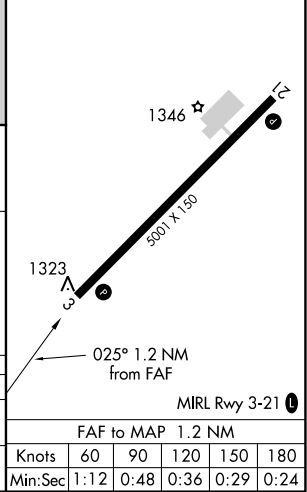
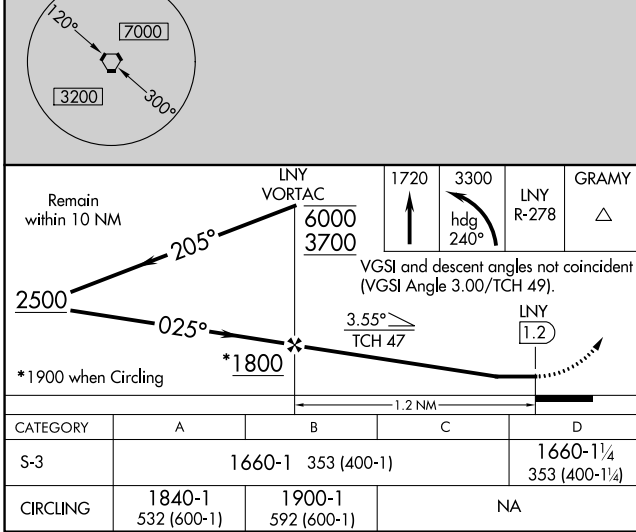
AWOS-3P 118.375	HCF CENTER 119.3 307.1	CTAF 122.9
---------------------------	----------------------------------	----------------------



PAC, 25 JAN 2024 to 21 MAR 2024

PAC, 25 JAN 2024 to 21 MAR 2024

ELEV 1308	D TDZE 1307
-----------	--------------------



LANAI CITY, HAWAII Amdt 7C 12AUG21	20°47'N-156°57'W	LANAI (LNY)(PHNY) VOR or TACAN RWY 3
---------------------------------------	------------------	--

FAF to MAP 1.2 NM					
Knots	60	90	120	150	180
Min:Sec	1:12	0:48	0:36	0:29	0:24

VORTAC LNY 117.7 Chan 124	APP CRS 098°	Rwy ldg TDZE Apt Elev	N/A N/A 1308
---	------------------------	-----------------------------	---

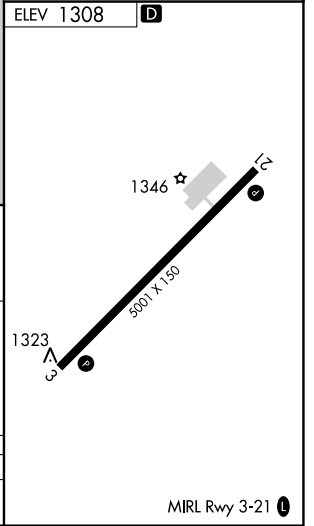
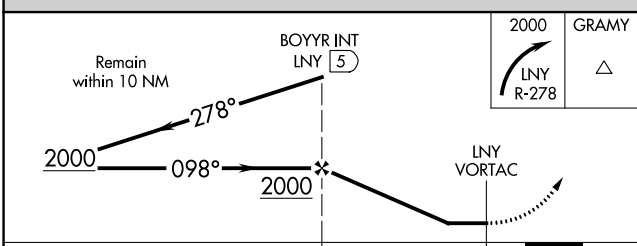
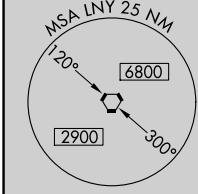
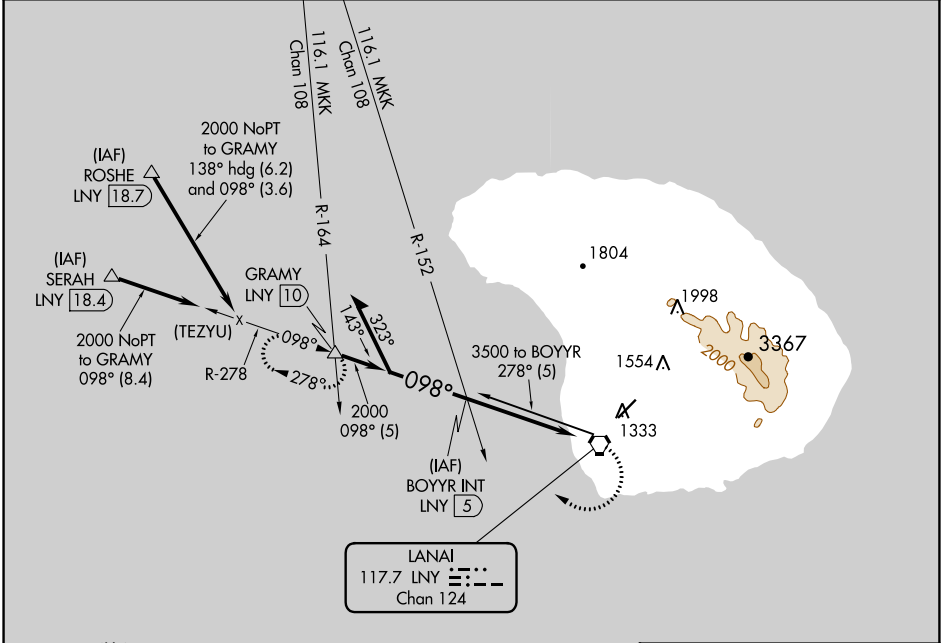
VOR or TACAN or GPS-A

LANAI (LNY)(PHNY)

⚠ When local altimeter not received, procedure not authorized, except for operators with approved weather reporting service. Circling Rwy 21 NA at night.

⚠ MISSED APPROACH: Climbing right turn to 2000 via LNY R-278 to GRAMY INT/LNY 10 DME and hold.

AWOS-3P 118.375	HCF CENTER 119.3 307.1	CTAF 122.9 ①
---------------------------	----------------------------------	-------------------------------



CATEGORY	A	B	C	D
CIRCLING	1840-1½ 532 (600-1½)	1900-1½ 592 (600-1½)	NA	

PAC, 25 JAN 2024 to 21 MAR 2024

PAC, 25 JAN 2024 to 21 MAR 2024