

| | | |
|-------------|----------|-------------|
| APP CRS | Rwy Idg | 5005 |
| 357° | TDZE | 415 |
| | Apt Elev | 423 |

RNAV (GPS) RWY 36

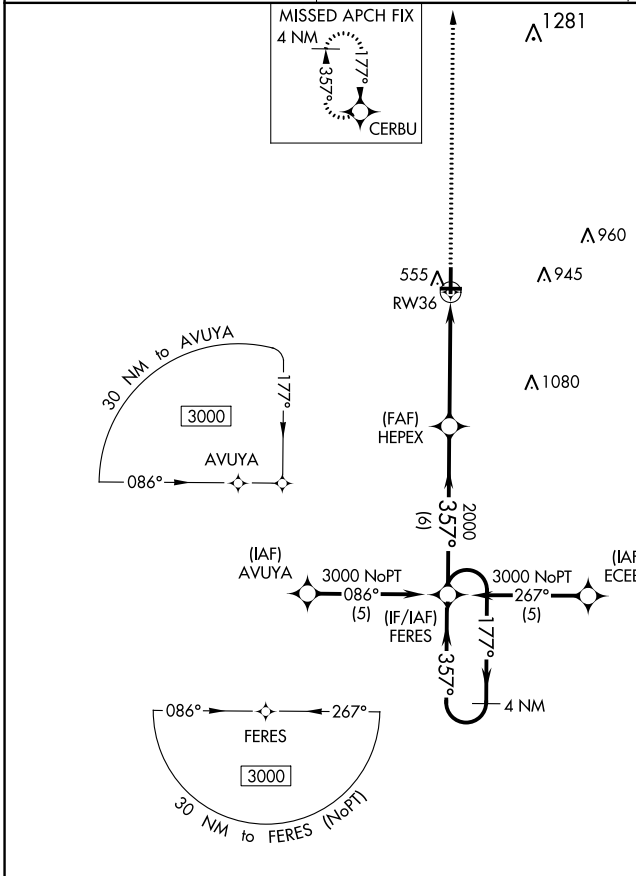
PALESTINE MUNI (PSN)

RNP APCH-GPS

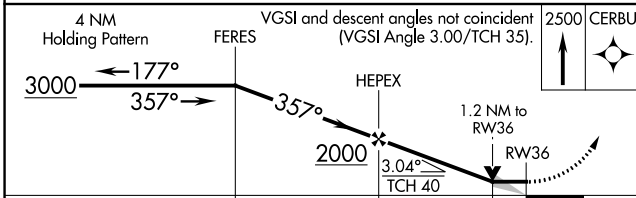
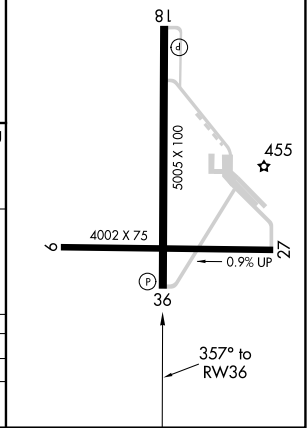
▼ VDP NA with C David Campbell Fld-Corsicana Muni altimeter setting. When local altimeter setting not received, use Corsicana altimeter setting and increase all MDAs 100 feet and visibility LNAV Cat C/D ½ SM and Circling Cat C ¼ SM. Circling Rwy 9, 27 NA at night.

MISSED APPROACH: Climb to 2500 direct CERBU WP and hold.

| | | |
|----------------------------|--|---------------------------------|
| AWOS-3PT 118.025 | FORT WORTH CENTER 135.25 265.1 | UNICOM 122.7 (CTAF) 0 |
|----------------------------|--|---------------------------------|



| | |
|-------------------------|----------|
| ELEV 423 | TDZE 415 |
| MIRL Rwy 18-36 and 9-27 | |
| REIL Rwy 36 | |



| CATEGORY | A | B | C | D |
|----------|-------------|-------------|---------------|--------------|
| LNAV MDA | 820-1 | 405 (400-1) | 820-1¼ | 405 (400-1¼) |
| CIRCLING | 960-1 | 1040-1 | 1360-2¾ | 1360-3 |
| | 537 (600-1) | 617 (700-1) | 937 (1000-2¾) | 937 (1000-3) |

SC-5, 22 FEB 2024 to 21 MAR 2024

SC-5, 22 FEB 2024 to 21 MAR 2024