

WAAS CH 49232 W02A	APP CRS 017°	Rwy Idg TDZE Apt Elev	6000 444 444
--	------------------------	-----------------------------	---

RNAV (GPS) RWY 2

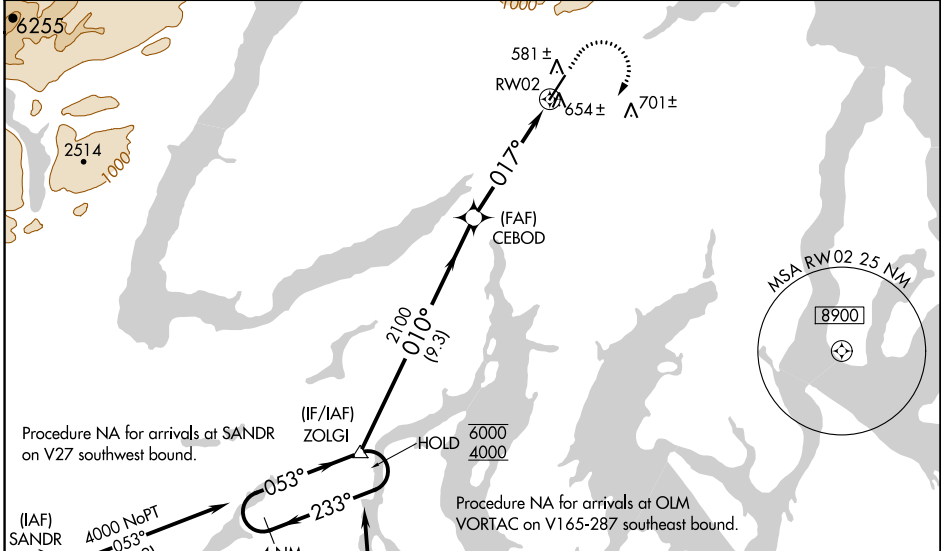
BREMERTON NTL (PWT)

RNP APCH - GPS.

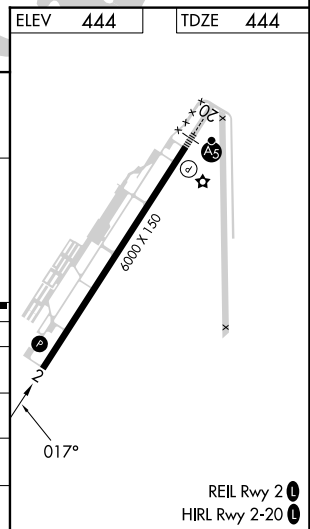
⚠ Circling NA for Cats C and D west of Rwy 2-20.
Rwy 2 helicopter visibility reduction below 3/4 SM NA.
For uncompensated BARO-VNAV systems, LNAV/VNAV NA below -15°C above 54°C.

MISSED APPROACH: Climb to 1200 then climbing right turn to 4000 direct ZOLGI and hold, continue climb-in-hold to 4000.

AWOS-3PT 121.2	SEATTLE APP CON 120.1 254.4 269.125	UNICOM 123.05 (CTAF) 0
--------------------------	---	----------------------------------



4 NM Holding Pattern		VGSIs and RNAV glidepath not coincident (VGSi Angle 3.00/TCH 43).		ELEV 444	TDZE 444
ZOLGI		CEBOD		ZOLGI	
6000	4000	2100	2100	* LNAV only	
GP 3.00° TCH 56		* 2.1 NM to RWY 2		RWY 2	
9.3 NM		2.9 NM		2.1 NM	
CATEGORY	A	B	C	D	
LPV DA	772-1		328 (400-1)		
LNAV/VNAV DA	913-1½		469 (500-1½)		
LNAV MDA	1160-1	716 (800-1)	1160-2	716 (800-2)	
C CIRCLING	1160-1	716 (800-1)	1160-2	1240-2½	796 (800-2½)



NW-1, 22 FEB 2024 to 21 MAR 2024

NW-1, 22 FEB 2024 to 21 MAR 2024