

APP CRS	Rwy Idg	11901
344°	TDZE	372
	Apf Elev	432


RNAV (RNP) Z RWY 34R

SEATTLE-TACOMA INTL (SEA)

RNP AR APCH.

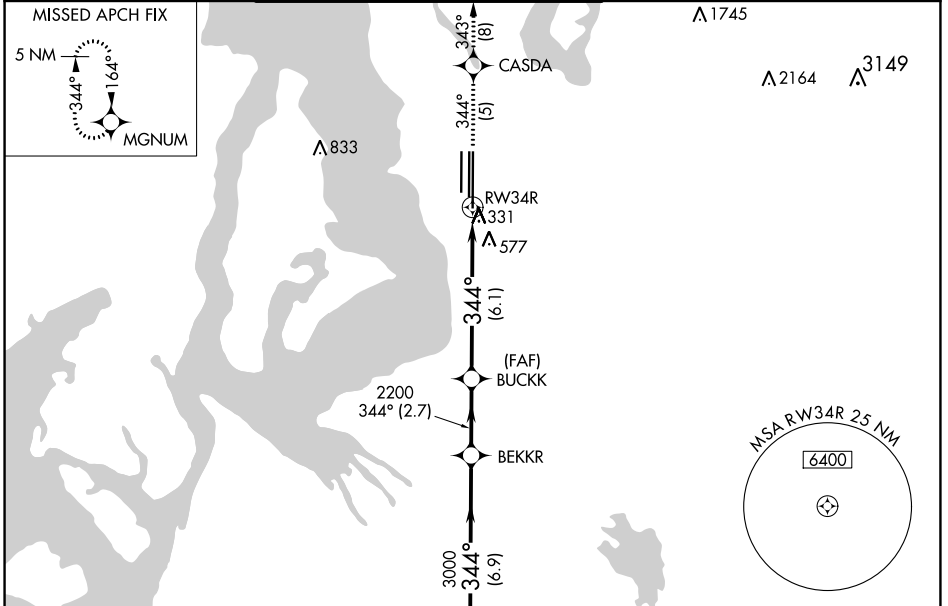
▼ Simultaneous approach authorized. For uncompensated Baro-VNAV systems, procedure NA below -6°C or above 54°C. Use of FD or AP required during simultaneous operations. For inop ALS, increase RNP 0.28 all Cats visibility to 1½ SM. Inop table does not apply to RNP 0.30.

MALSR



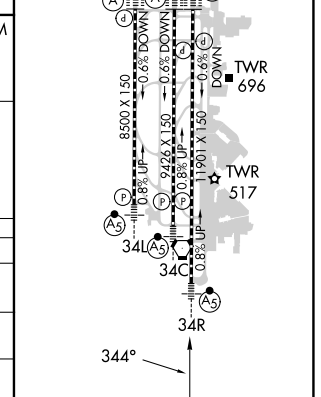
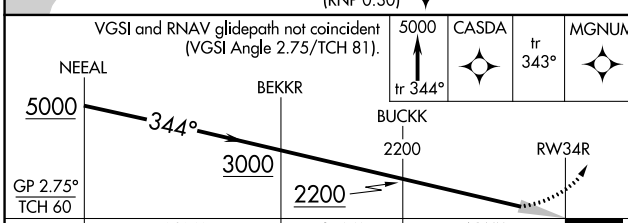
MISSED APPROACH: Climb to 5000 on track 344° to CASDA and on track 343° to MGNUM and hold, continue climb-in-hold to 5000.

D-ATIS	SEATTLE APP CON	SEATTLE TOWER	GND CON	CLNC DEL	CPDLC
118.0	133.65 273.45	119.9 239.3 (Rwys 16L, 16C, 34C, 34R) 120.95 239.3 (Rwys 16R, 34L)	121.7	128.0	



ELEV	432	TDZE	372
------	-----	------	-----

HIRL all Rwys
TDZ/CL Rwys 16L, 16C, 16R and 34R



CATEGORY	A	B	C	D
RNP 0.28 DA		867/50	495 (500-1)	
RNP 0.30 DA		880-1½	508 (500-1½)	

AUTHORIZATION REQUIRED

NW-1, 22 FEB 2024 to 21 MAR 2024

NW-1, 22 FEB 2024 to 21 MAR 2024