

WAAS CH 65824 W04A	APP CRS 040°	Rwy Idg TDZE Apt Elev	5007 66 70
--	------------------------	-----------------------------	---------------------------------------

RNAV (GPS) RWY 4

SUFFOLK EXEC (SF'Q)

RNP APCH.

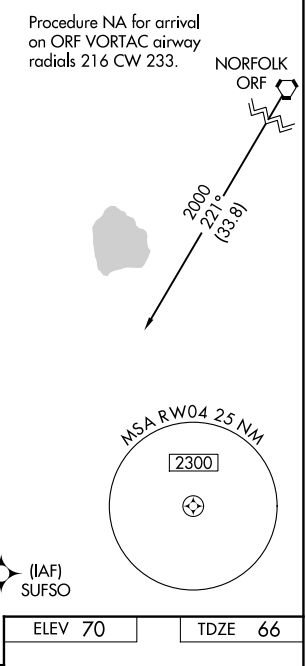
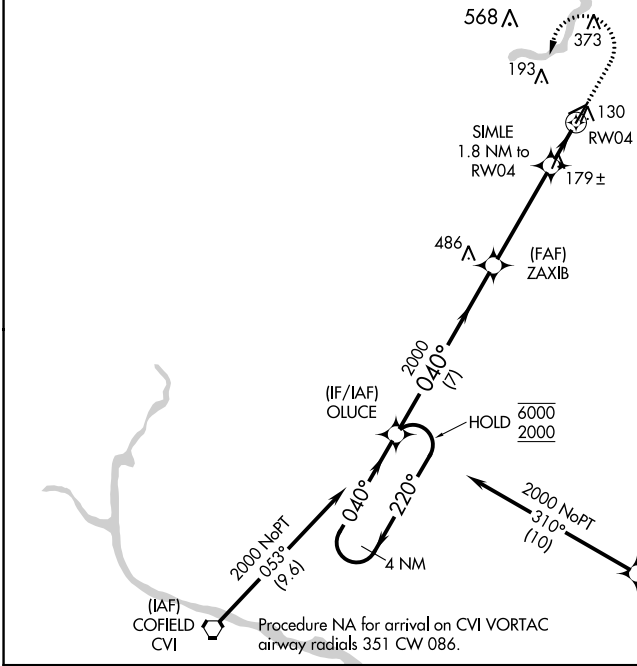
▼ For uncompensated Baro-VNAV systems, LNAV/VNAV NA below -15°C or above 54°C.

MISSED APPROACH:
Climb to 600 then climbing left turn to 2000 direct OLUCE and hold.

AWOS-3
119.375

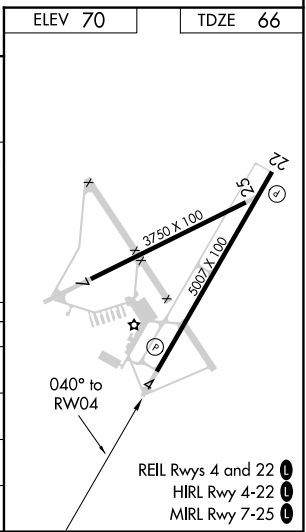
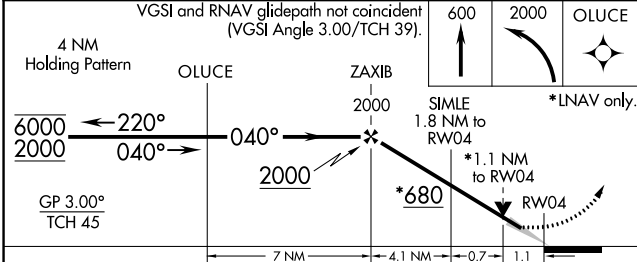
NORFOLK APP CON
127.9 269.425

UNICOM
122.7 (CTAF)



NE-3, 22 FEB 2024 to 21 MAR 2024

NE-3, 22 FEB 2024 to 21 MAR 2024



CATEGORY	A	B	C	D
LPV DA		322-7/8	256 (300-7/8)	
LNAV/VNAV DA		474-1 3/8	408 (500-1 3/8)	
LNAV MDA		440-1	374 (400-1)	
CIRCLING	500-1 430 (500-1)	560-1 490 (500-1)	680-1 3/4 610 (700-1 3/4)	680-2 610 (700-2)