


WAAS CH <b>77927</b> <b>W12A</b>	APP CRS <b>121°</b>	Rwy Idg TDZE Apt Elev	<b>8004</b> <b>230</b> <b>261</b>
--	------------------------	-----------------------------	---

# RNAV (GPS) RWY 12

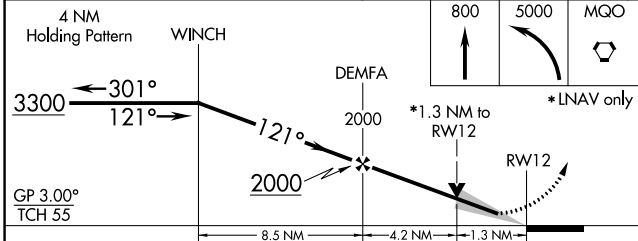
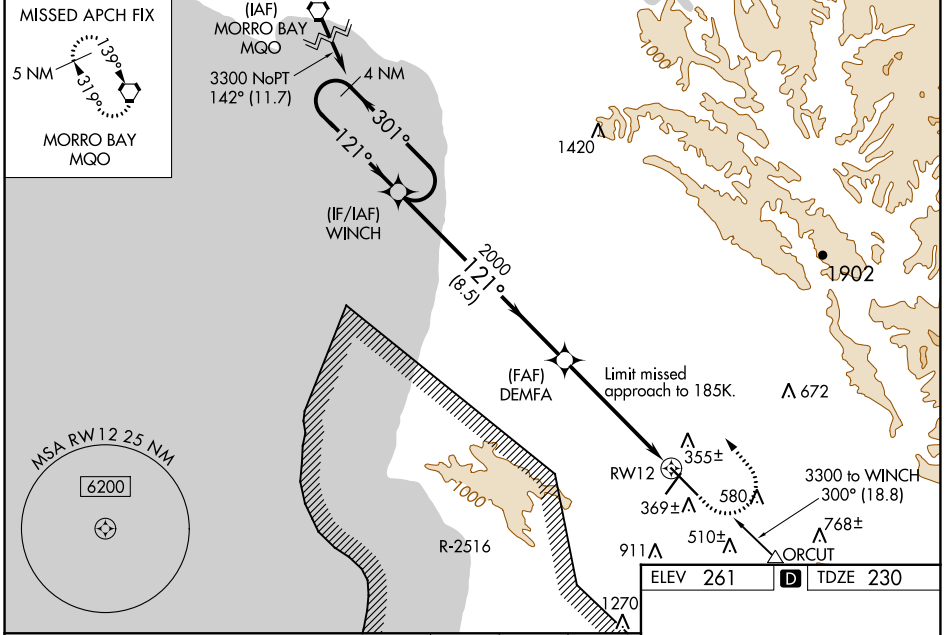
SANTA MARIA PUB/CAPT G ALLAN HANCOCK FLD (SMX)

**⚠** Circling Rwy 2 NA at night. Baro-VNAV and VDP NA when using San Luis Obispo altimeter setting. For uncompensated Baro-VNAV systems, LNAV/VNAV NA below -15°C (5°F) or above 42°C (107°F). DME/DME RNP-0.3 NA. When local altimeter setting not received, use San Luis Obispo altimeter setting and increase LPV DA to 489 feet; increase LNAV/VNAV DA to 622 feet and all visibilities to RVR 3500; increase all MDAs 60 feet and LNAV visibility Cat C/D to RVR 5500. For inop MALSR, increase LNAV Cat C/D visibility to 1 3/8 mile. # RVR 1800 authorized with use of FD or AP or HUD to DA, NA when using Vandenberg altimeter setting.

**MALSR**  


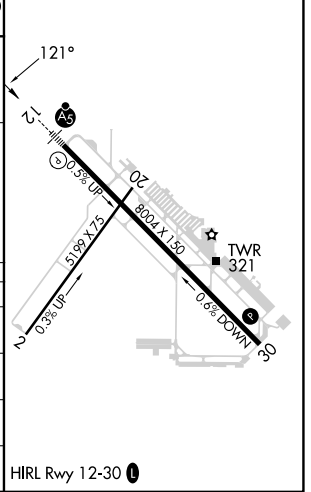
**MISSED APPROACH:**  
 Climb to 800 then climbing left turn to 5000 direct MQO VORTAC and hold.

ATIS <b>121.15</b>	SANTA BARBARA APP CON* <b>124.15 327.8</b>	SANTA MARIA TOWER* <b>118.3 (CTAF) 0 239.25</b>	GND CON <b>121.9</b>	UNICOM <b>122.95</b>
-----------------------	---	--	-------------------------	-------------------------



ELEV 261	<b>D</b> TDZE 230
----------	-------------------

CATEGORY	A	B	C	D
LPV DA#		430/24	200 (200-1/2)	
LNAV/VNAV DA		563/32	333 (400-5/8)	
LNAV MDA	680/24	450 (500-1/2)	680/50	450 (500-1)
CIRCLING	860-1 599 (600-1)	1000-1 739 (800-1)	1420-3 1159 (1200-3)	1540-3 1279 (1300-3)



# RNAV (GPS) RWY 12

SW-3, 22 FEB 2024 to 21 MAR 2024

SW-3, 22 FEB 2024 to 21 MAR 2024