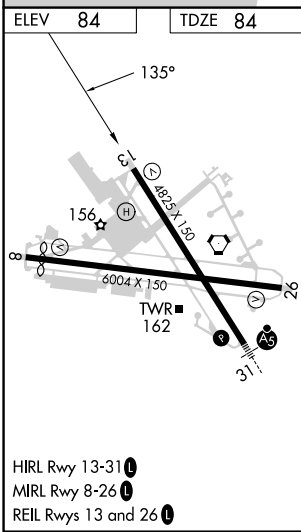
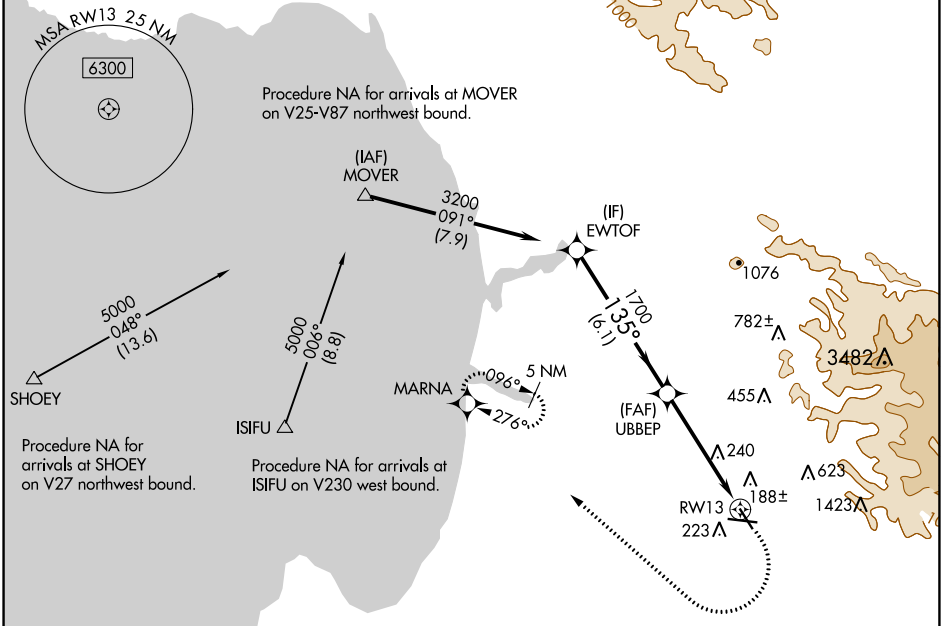


WAAS CH 57944 W13A	APP CRS 135°	Rwy Idg 4825 TDZE 84 Apt Elev 84
--	------------------------	---

RNAV (GPS) RWY 13

SALINAS MUNI (SNS)

RNP APCH-GPS.		MISSED APPROACH: (Do not exceed 185K until MARNNA). Climb to 600 then climbing right turn to 4800 direct MARNNA and hold, continue climb-in-hold to 4800.	
⚠ Rwy 13 helicopter visibility reduction below 3/4 SM NA. For uncompensated Baro-VNAV systems, LNAV/VNAV NA below -1°C or above 54°C. ⚠ Circling NA for Cats C and D northeast of Rwy 13 and north of Rwy 26.			
ATIS 124.85	NORCAL APP CON 133.0 251.15	SALINAS TOWER ★ 119.525 (CTAF) 239.3	UNICOM 123.0



EWTOF 3200 GP 3.00° TCH 50	1700 UBBERP	1700	600 4800 MARNNA	1.4 NM to RWY 13	RWY 13
CATEGORY	A	B	C	D	
LPV DA	334-3/4 250 (300-3/4)				
LNAV/VNAV DA	447-1 363 (400-1)				
LNAV MDA	580-1	496 (500-1)	580-1 3/8	496 (500-1 3/8)	
CIRCLING	580-1	496 (500-1)	780-2 696 (700-2)	1620-3 1536 (1600-3)	

SW-2, 22 FEB 2024 to 21 MAR 2024

SW-2, 22 FEB 2024 to 21 MAR 2024