

WICHITA FALLS, TEXAS

RNAV (GPS) RWY 15R

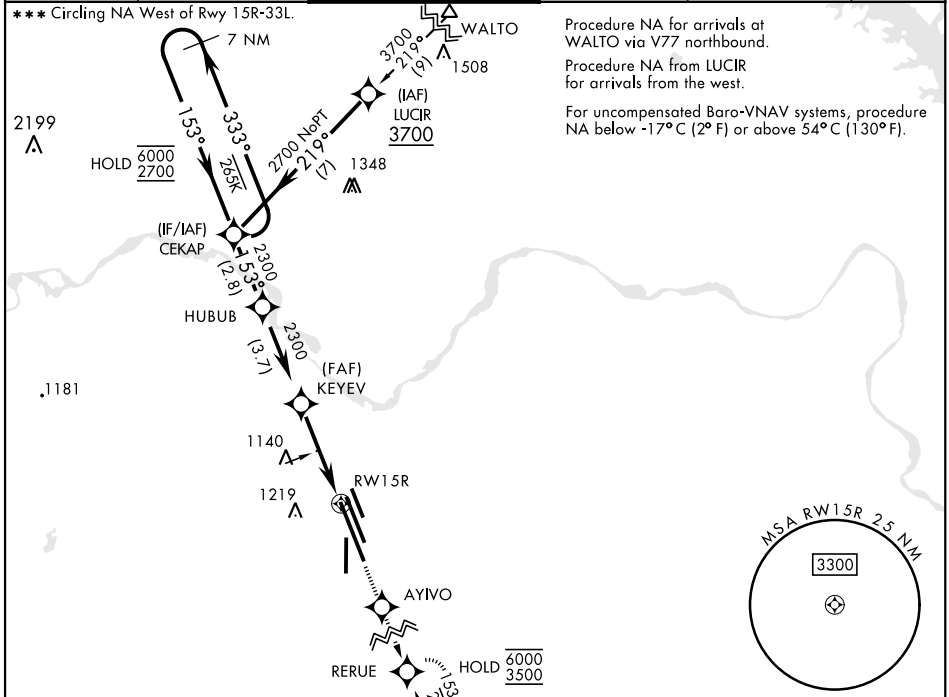
APCH CRS 153°	Rwy ldg 13,101 TDZE 998 Arprt Elev 1019
-------------------------	--

AL-454 [USAF]

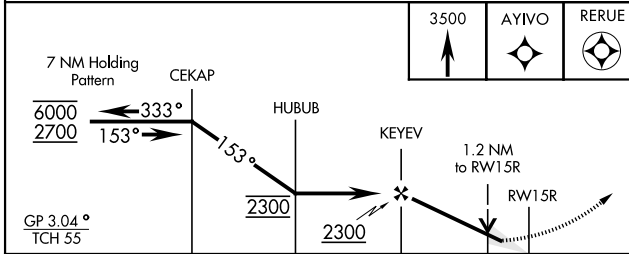
SHEPPARD AFB/WICHITA FALLS MUNI (KSPS)

RNP APCH.	MALSR	MISSED APPROACH: Climb to 3500 direct AYIVO and via 153° track to RERUE and hold.
<p>▼ * When ALS inop, increase CAT AB vis to 3/4 mile; CAT CDE vis to 7/8 mile. ** When ALS inop, increase CAT AB vis to 1 mile; CAT CDE vis to 1 1/4 miles.</p>		

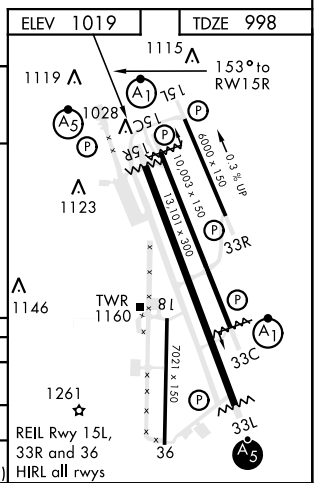
ATIS ★ 132.05 269.9	APP CON 118.2 269.025	TOWER ★ 119.75 0 279.525 (CTAF)	GND CON 125.5 289.4	CLNC DEL 121.2 282.225	ASR
-------------------------------	---------------------------------	---	-------------------------------	----------------------------------	-----



EMERG SAFE ALT FROM RWY15R 100 NM 4600



CATEGORY	A	B	C	D	E
LNAV/VNAV DA*	1249-1/2 251 (300-1/2)	1252-1/2 254 (300-1/2)	1260-1/2 262 (300-1/2)	1271-1/2 273 (300-1/2)	
LNAV MDA**	1420-1/2 401 (500-1)	1480-1 461 (500-1)	1420-3/4 461 (500-1/2)	1420-3 1001 (1100-3)	422 (500-3/4) 2080-3 1061 (1100-3)
*** CIRCLING	1420-1 401 (500-1)	1480-1 461 (500-1)	1480-1 1/2 461 (500-1/2)	2020-3 1001 (1100-3)	2080-3 1061 (1100-3)



SC-2, 22 FEB 2024 to 21 MAR 2024

SC-2, 22 FEB 2024 to 21 MAR 2024

WICHITA FALLS, TEXAS

33°59'N-98°30'W

SHEPPARD AFB/WICHITA FALLS MUNI (KSPS)

Amdt 5 14JUL22

RNAV (GPS) RWY 15R