

SUMTER, SOUTH CAROLINA

# ILS or LOC Y RWY 22R

LOC I-JWU <b>108.7</b>	APCH CRS <b>223°</b>	Rwy Ldg 10,014	22R 8014
		TDZE 240	22L 235
		Arprt Elev 241	241

AL-409 [USAF]

SHAW AFB (KSSC)

RADAR or DME Required.		ALSIF-1 	MISSED APPROACH: Climbing to 2000, intercept SSC TACAN R-223 to PINIE and hold.
<p>▼* When ALS inop, increase RVR to 40 and vis to 3/4 mile. ** When ALS inop, increase CAT AB RVR to 55 and vis to 1 mile, CAT CDE vis to 1 1/4 miles.</p>			

ATIS ★ <b>132.125 270.1</b>	SHAW APP CON <b>125.4 318.1</b>	SHAW TOWER ★ <b>126.65 254.25</b>	GND CON <b>126.1 275.8</b>	CLNC DEL <b>126.1 275.8</b>
--------------------------------	------------------------------------	--------------------------------------	-------------------------------	--------------------------------

Sidestep Rwy 22L: Terrain 239' MSL, 200' prior to threshold, 200' right of course.

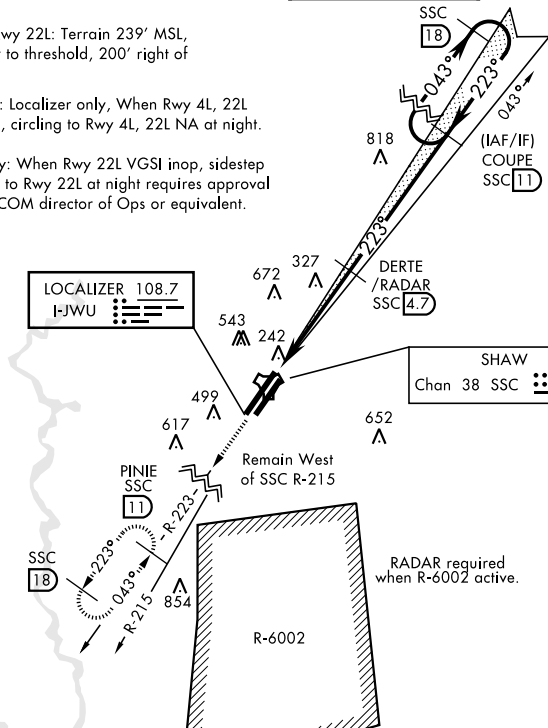
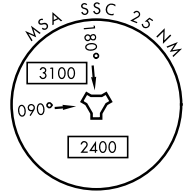
CAUTION: Localizer only, When Rwy 4L, 22L VGSi inop, circling to Rwy 4L, 22L NA at night.

USAF Only: When Rwy 22L VGSi inop, sidestep or circling to Rwy 22L at night requires approval from MAJCOM director of Ops or equivalent.

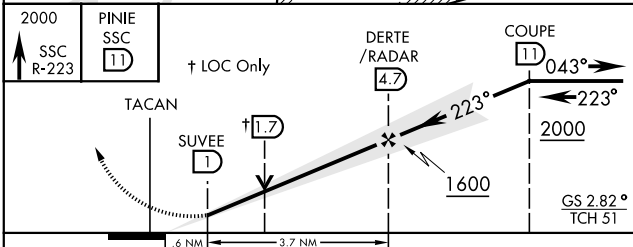
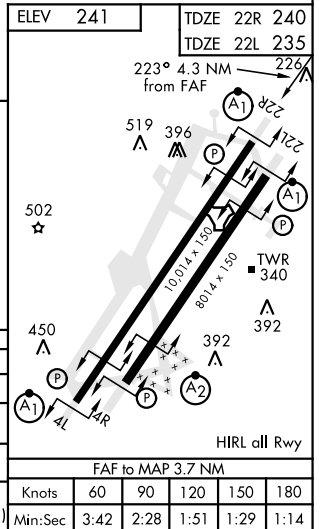
▲  
1573

LOCALIZER 108.7  
I-JWU

SHAW  
Chan 38 SSC



EMERG SAFE ALT 100 NM 3800



CATEGORY	A	B	C	D	E
S-ILS 22R*	440/24		200	(200-1/2)	
S-LOC 22R**	660/24	420 (500-1/2)	660/40	420 (500-3/4)	
SIDESTEP ** 22L	660-1	425 (500-1)	660-1 1/4	425 (500-1 1/4)	
CIRCLING	820-1 579 (600-1)	880-1 639 (700-1)	1000-2 1/4 759 (800-2 1/4)	1000-2 1/2 759 (800-2 1/2)	1000-2 3/4 759 (800-2 3/4)

SUMTER, SOUTH CAROLINA  
Amdt 1 10OCT19

33° 58' N-80° 28' W

SHAW AFB (KSSC)

# ILS or LOC Y RWY 22R

SE-2, 22 FEB 2024 to 21 MAR 2024

SE-2, 22 FEB 2024 to 21 MAR 2024