

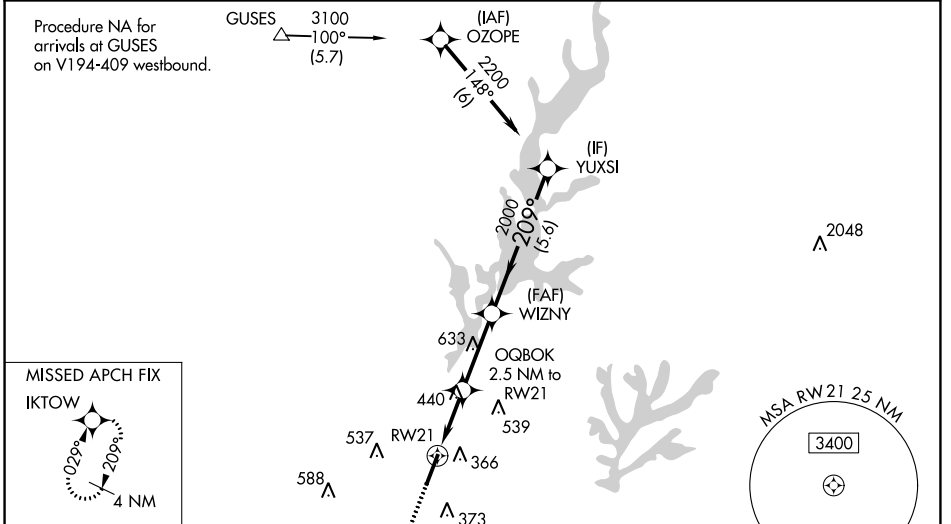
| | | | |
|--|------------------------|-----------------------------|---|
| WAAS CH 86522 W21A | APP CRS 209° | Rwy Idg TDZE Apt Elev | 6501 230 247 |
|--|------------------------|-----------------------------|---|

RNAV (GPS) RWY 21

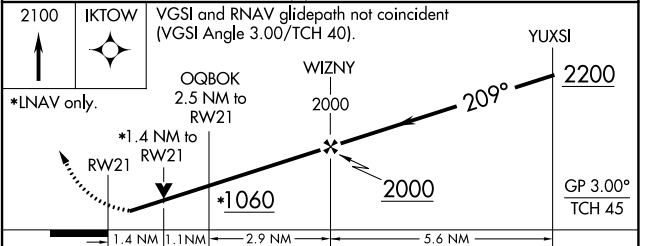
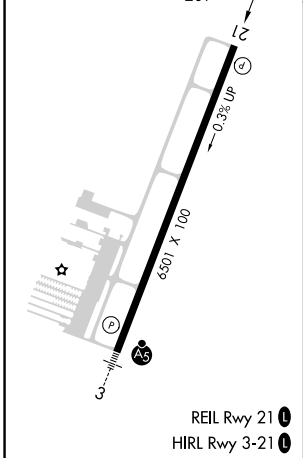
RALEIGH EXEC JETPORT AT SANFORD-LEE COUNTY (TTA)

| | | |
|-----------|--|---|
| RNP APCH. | Baro-VNAV NA when using Raleigh/Durham altimeter setting. For uncompensated Baro-VNAV systems, LNAV/VNAV NA below -15°C or above 54°C. When local altimeter setting not received, use Raleigh/Durham altimeter setting and increase all DA 81 feet and all MDA 100 feet. Increase LPV all Cts visibility to 1¼ SM, LNAV/VNAV all Cts visibility to 1½ SM, LNAV Cts C and D visibility to 1½ SM, and Circling Cat C visibility to 2 SM and Cat D visibility to 2¾ SM. Rwy 21 helicopter visibility reduction below ¾ SM NA. VDP NA when using Raleigh/Durham altimeter setting. | MISSED APPROACH: Climb to 2100 direct IKTOW and hold. |
|-----------|--|---|

| | | | |
|--------------------------|---|-----------------------------------|-----------------------|
| AWOS-3 120.625 | RALEIGH APP CON 125.3 353.675 | UNICOM 123.075 (CTAF) 0 | GCO 135.075 |
|--------------------------|---|-----------------------------------|-----------------------|



| | |
|-----------------|-----------------|
| ELEV 247 | TDZE 230 |
|-----------------|-----------------|



| CATEGORY | A | B | C | D |
|-------------------|----------------------|----------------------|------------------------|------------------------|
| LPV DA | | 530-1 | 300 (300-1) | |
| LNAV/VNAV DA | | 518-7/8 | 288 (300-7/8) | |
| LNAV MDA | 700-1 | 470 (500-1) | 700-1¾ | 470 (500-1¾) |
| C CIRCLING | 760-1 513 (600-1) | 820-1 573 (600-1) | 840-1½ 593 (600-1½) | 960-2¼ 713 (800-2¼) |

SE-2, 22 FEB 2024 to 21 MAR 2024

SE-2, 22 FEB 2024 to 21 MAR 2024