

(MIGGY2.MIGGY) 19227

# MIGGY TWO DEPARTURE (RNAV)

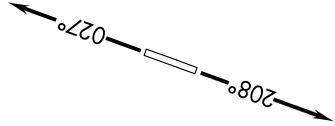
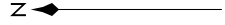
AL-5642 (FAA)

CUSTER (TTF)  
MONROE, MICHIGAN

AWOS-3  
119.075  
CTAF  
122.7  
DETROIT DEP CON  
134.3 284.0

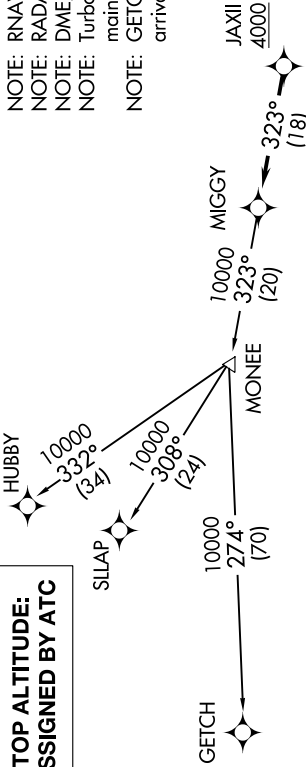
- NOTE: RNAV 1.
- NOTE: RADAR required.
- NOTE: DME/DME/IRU or GPS required.
- NOTE: Turbojet departures at/above 10000, maintain 280K until advised by ATC.
- NOTE: GETCH TRANSITION: For use by KMIKE area arrivals only, or as assigned by ATC.

TAKEOFF MINIMUMS:  
Standard.



NOTE: Chart not to scale.

EC-1, 22 FEB 2024 to 21 MAR 2024



**TOP ALTITUDE:  
ASSIGNED BY ATC**

## DEPARTURE ROUTE DESCRIPTION

**TAKEOFF RUNWAY 3:** Climb on heading 027° or as assigned for RADAR vectors to cross JAXII at or above 4000, thence...

**TAKEOFF RUNWAY 21:** Climb on heading 208° or as assigned for RADAR vectors to cross JAXII at or above 4000, thence...

....on track 323° to MIGGY, then on (transition). Maintain ATC assigned altitude, expect filed altitude 10 minutes after departure.

- GETCH TRANSITION (MIGGY2.GETCH):
- HUBBY TRANSITION (MIGGY2.HUBBY):
- SILAP TRANSITION (MIGGY2.SILAP):

EC-1, 22 FEB 2024 to 21 MAR 2024

# MIGGY TWO DEPARTURE (RNAV)

(MIGGY2.MIGGY) 15AUG19

MONROE, MICHIGAN  
CUSTER (TTF)