

WAAS CH 82418 W18A	APP CRS 186°	Rwy Idg TDZE Apt Elev	5700 6763 6763
----------------------------------------	------------------------	-----------------------------	-------------------------------------------

RNAV (GPS) RWY 18

PANGUITCH MUNI (U55)

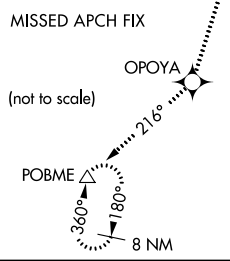
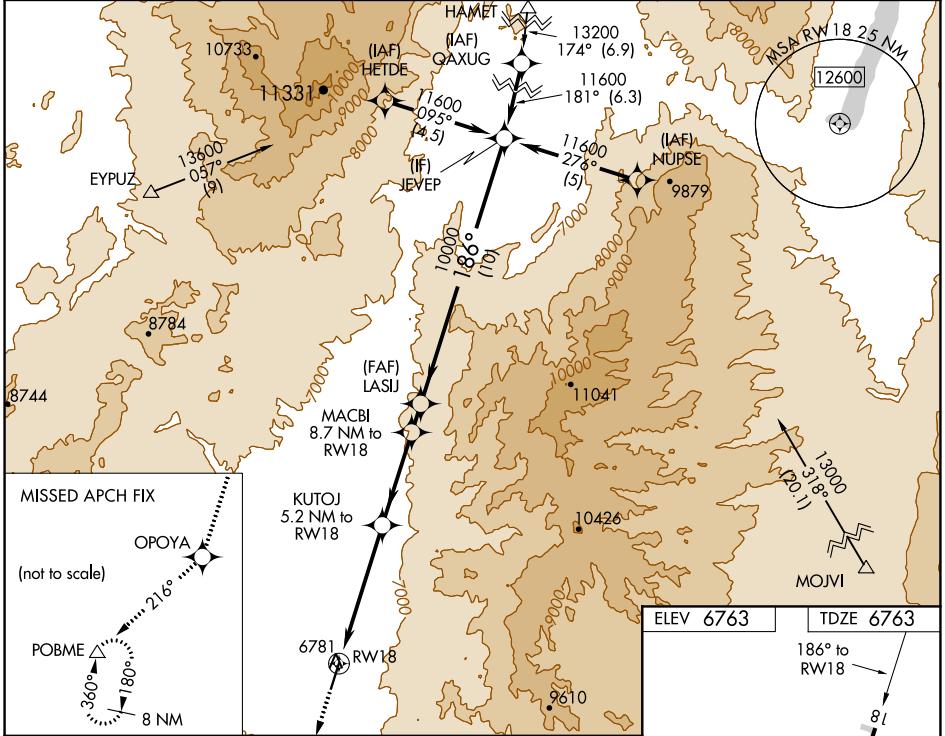
For uncompensated Baro-VNAV systems, LNAV/VNAV NA below -28°C (-18°F) or above 54°C (130°F). DME/DME RNP-0.3 NA. When local altimeter setting not received use Bryce Canyon altimeter setting and increase all DA 149 feet and all MDA 160 feet, increase LPV visibility 1/4 mile and increase LNAV visibility and Circling Cat B visibility 1/4 mile. Baro-VNAV and VDP NA with Bryce Canyon altimeter setting.

MISSED APPROACH: Climb to 12500 direct OPOYA and on track 216° to POBME and hold, continue climb-in-hold 12500.

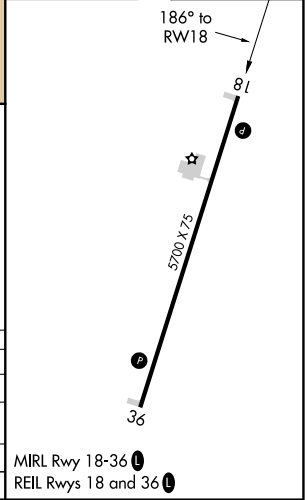
AWOS-3
133.125

SALT LAKE CENTER
133.6 269.25

CTAF
122.9



ELEV 6763	TDZE 6763
-----------	-----------



12500	OPOYA	tr 216°	POBME	JEVEP
*LNAV only.				Procedure Turn NA
	RW18	*2.1 NM to RW18	KUTOJ 5.2 NM to RW18	GP 3.00° TCH 40
	2.1 NM	3.1 NM	3.5 NM	1.1 NM
CATEGORY	A	B	C	D
LPV DA	6963-1	200 (200-1)		NA
LNAV/VNAV DA	7331-2	568 (600-2)		NA
LNAV MDA	7460-1	697 (700-1)		NA
CIRCLING	7460-1	697 (700-1)		NA

SW-4, 22 FEB 2024 to 21 MAR 2024

SW-4, 22 FEB 2024 to 21 MAR 2024

APP CRS	Rwy Idg	5700
005°	TDZE	6757
	Apt Elev	6763

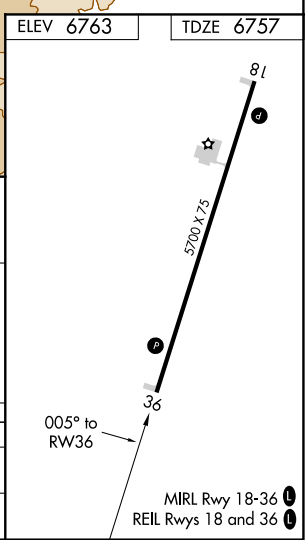
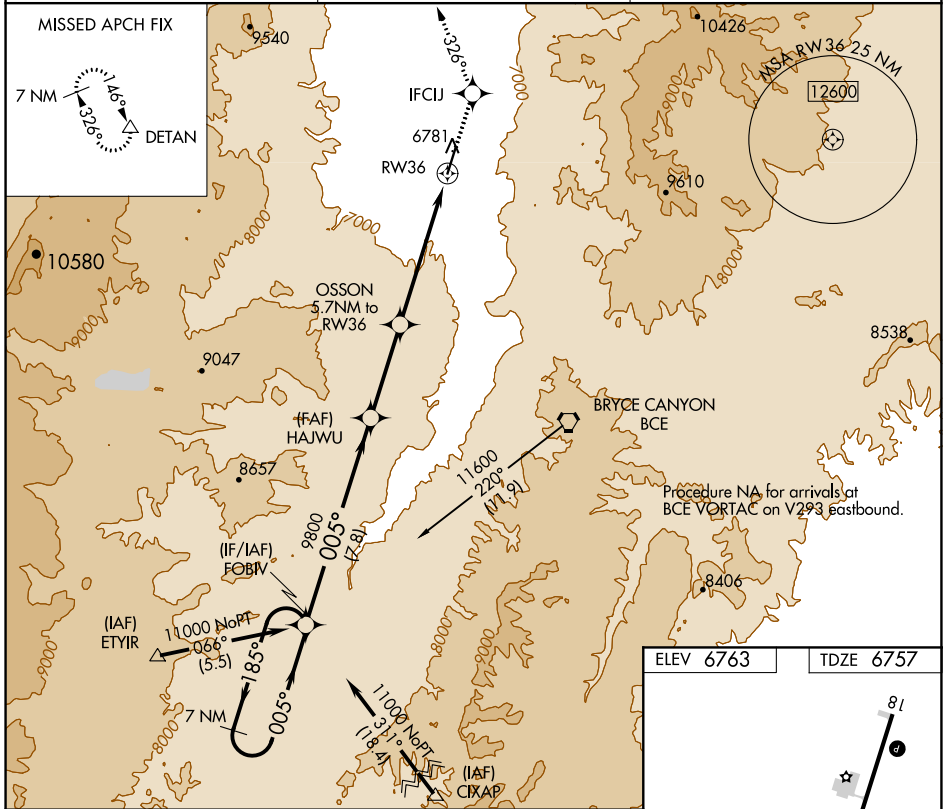
RNAV (GPS) RWY 36

PANGUITCH MUNI (U55)

⚠ DME/DME RNP-0.3 NA. When local altimeter setting not received use Bryce Canyon altimeter setting and increase all MDA 160 feet.
⚠ -28°C VDP NA with Bryce Canyon altimeter setting.

MISSED APPROACH: Climb to 12000 direct IFCU and on track 326° to DETAN and hold.

AWOS-3 133.125	SALT LAKE CENTER 133.6 269.25	CTAF 122.9
--------------------------	-----------------------------------------	----------------------



VGSI and descent angles not coincident (VGSI Angle 3.00/TCH 40).

7 NM Holding Pattern	FOBIV	HAJWU	OSSON 5.7 NM to RW36	IFCUJ 3.5 NM to RW36	DETAN
11000	9800	8640			
185°	005°	005°	3.06° TCH 40	326°	
7.8 NM	3.5 NM	2.2 NM	3.5 NM		

CATEGORY	A	B	C	D
LNVA MDA	7900-1¼ 1143 (1200-1¼)	7900-1½ 1143 (1200-1½)		NA
CIRCLING	7900-1¼ 1137 (1200-1¼)	7900-1½ 1137 (1200-1½)		NA

SW-4, 22 FEB 2024 to 21 MAR 2024

SW-4, 22 FEB 2024 to 21 MAR 2024