

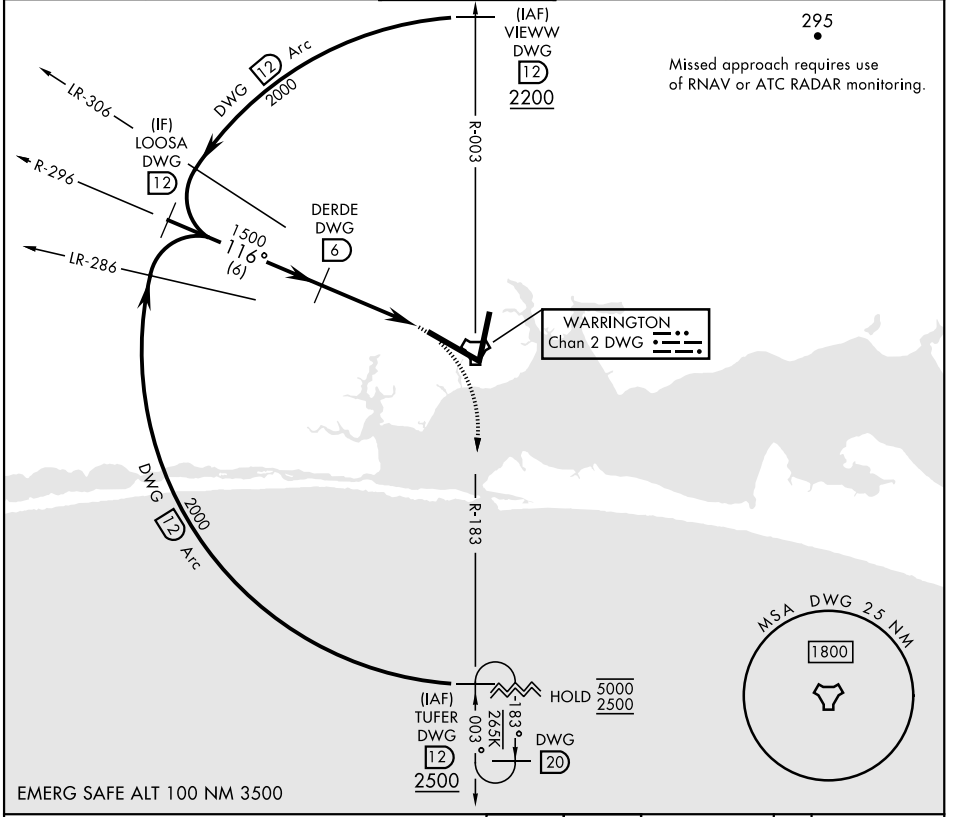
TACAN Z RWY 12

TACAN DWG Chan 2	APCH CRS 116°	Rwy Ldg 11,987 TDZE 84 Arprt Elev 84
---------------------	------------------	---

AL-436 [USAF] EGLIN AFB/DESTIN-FT WALTON BEACH (KVPS)

MISSED APPROACH: Climbing right turn to 2200 on DWG R-183 to 12 DME (TUFER) and hold.

ATIS ★ 134.625 273.5	APP CON 125.1 281.45 271°-089° 132.1 360.6 090°-270°	TOWER 118.2 353.65	GND CON 121.8 335.8	CLNC DEL 127.7 377.2
-------------------------	--	-----------------------	------------------------	-------------------------



EMERG SAFE ALT 100 NM 3500

	2200 TUFER DWG R-183		ELEV 84 TDZE 84		
	LOOSA 2000		DERDE 1500		
	3.02° TCH 50		LEDKE 2.2		
	3.8 NM		0.5 NM		
CATEGORY	A	B	C	D	E
S-12	540/55	456 (500-1)	540-1½	456	(500-1½)
CIRCLING	580-1	496 (500-1)	680-1½ 596 (600-1½)	680-2	596 (600-2)

HIRL all rwys
† Rwy 20 apch lgt 1500' nonstandard.

TACAN Z RWY 12

SE-3, 22 FEB 2024 to 21 MAR 2024

SE-3, 22 FEB 2024 to 21 MAR 2024