

WAAS CH 56639 W11A	APP CRS 114°	Rwy ldg 2713 TDZE 15 Apt Elev 15
--	------------------------	---

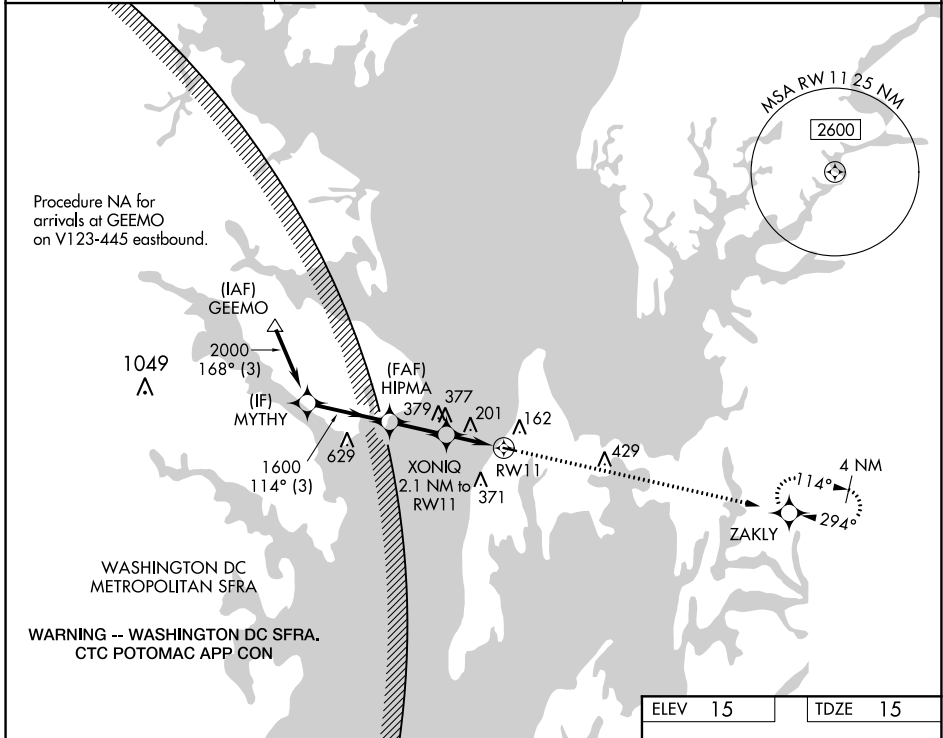
RNAV (GPS) RWY 11

BAY BRIDGE (W29)

RNP APCH. MISSED APPROACH: Climb to 2100 direct ZAKLY and hold.

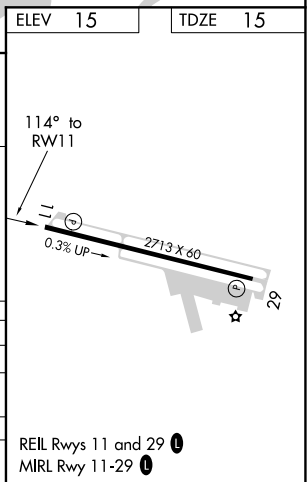
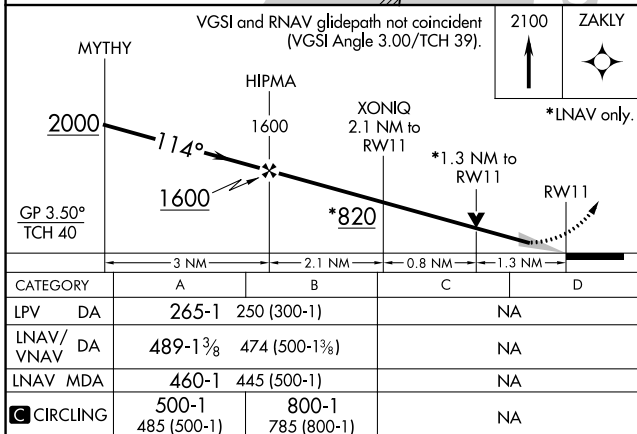
For uncompensated Baro-VNAV systems, LNAV/VNAV NA below -15°C or above 54°C.

AWOS-3 120.575	POTOMAC APP CON 119.0 282.275	UNICOM 122.725 (CTAF) 0
--------------------------	---	--



NE-3, 09 SEP 2021 to 07 OCT 2021

NE-3, 09 SEP 2021 to 07 OCT 2021



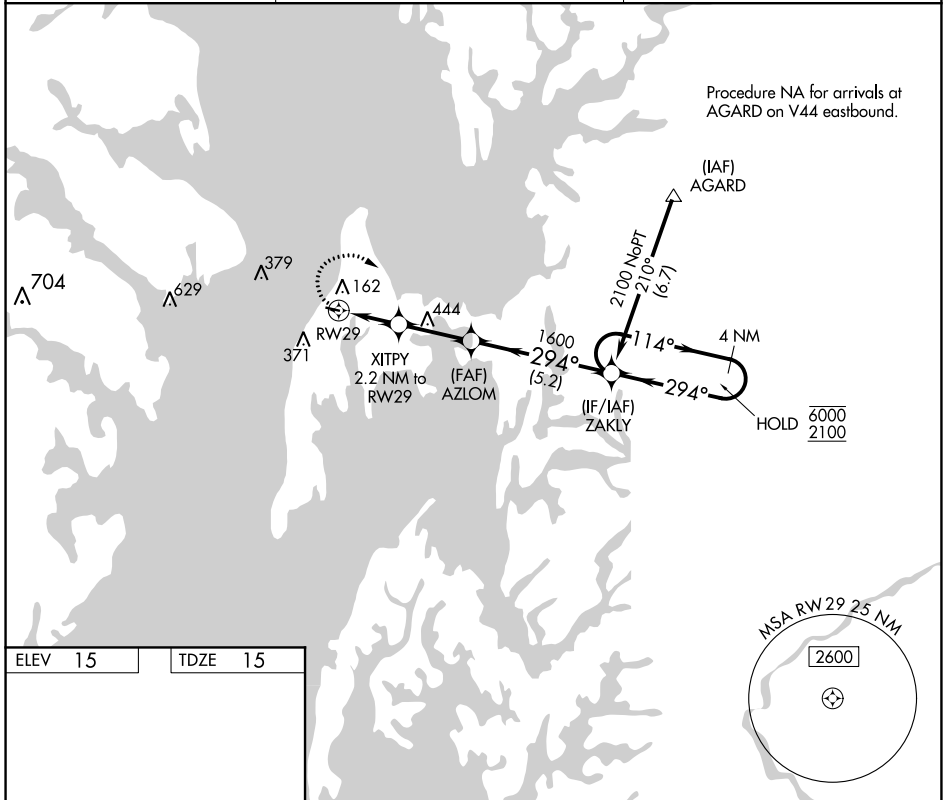
APP CRS	Rwy Idg	2713
294°	TDZE	15
	Apt Elev	15

RNAV (GPS) RWY 29

BAY BRIDGE (W29)

RNP APCH.	MISSED APPROACH: Climbing right turn to 2100 direct ZAKLY and hold.
⚠ Rwy 29 helicopter visibility reduction below 1 SM NA.	

AWOS-3 120.575	POTOMAC APP CON 119.0 282.275	UNICOM 122.725 (CTAF) 0
--------------------------	---	-----------------------------------



ELEV 15	TDZE 15
---------	---------

REIL Rws 11 and 29 **0**
MIRL Rwy 11-29 **0**

2100	ZAKLY	Visual Segment - Obstacles.	ZAKLY	4 NM Holding Pattern
CATEGORY	A	B	C	D
LNAV MDA	480-1	465 (500-1)	NA	
C CIRCLING	500-1 485 (500-1)	800-1 785 (800-1)	NA	

NE-3, 09 SEP 2021 to 07 OCT 2021

NE-3, 09 SEP 2021 to 07 OCT 2021