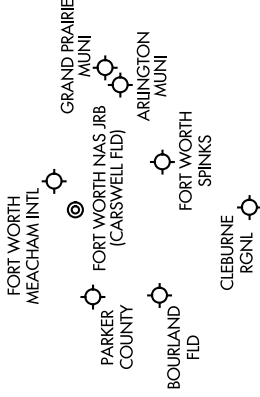
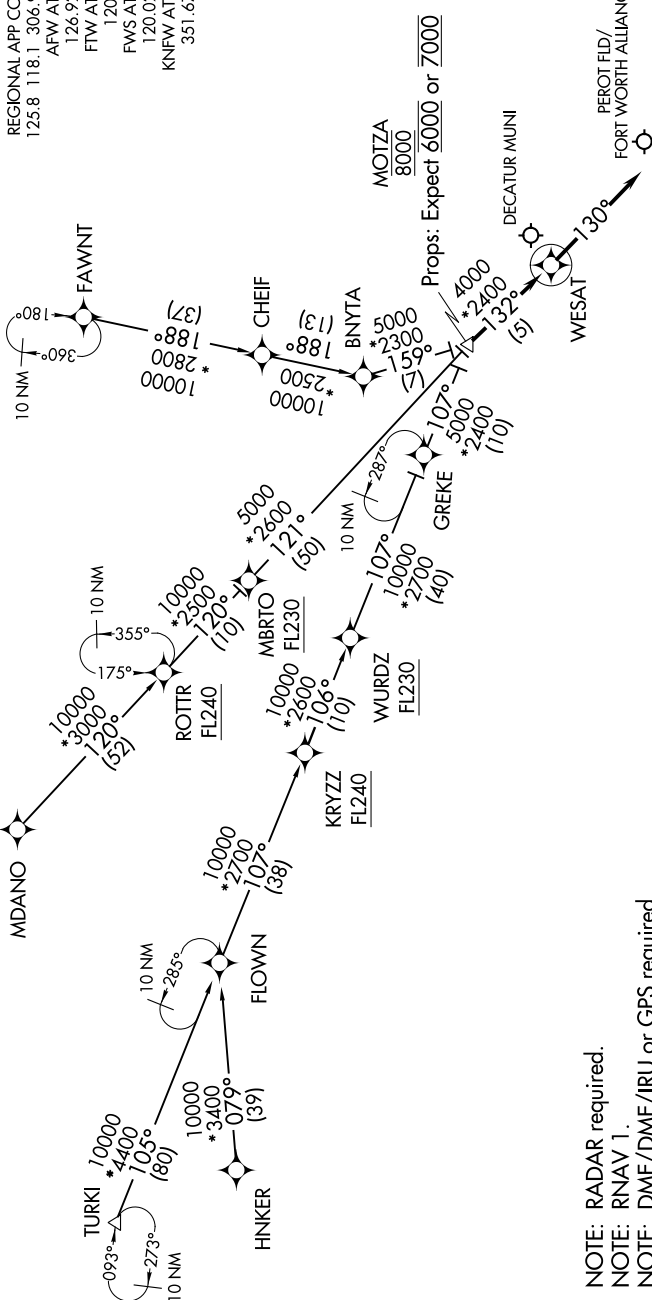


# WESAT TWO ARRIVAL (RNAV)

DALLAS-FORT WORTH, TEXAS

REGIONAL APP CON  
125.8 118.1 306.95  
AFW ATIS  
126.925  
FTW ATIS  
120.7  
FWS ATIS  
120.025  
KNFW ATIS \*  
351.675



NOTE: RADAR required.  
NOTE: RNAV 1.  
NOTE: DME/DME/IRU or GPS required.

**ARRIVAL ROUTE DESCRIPTION**

FAWNT TRANSITION (FAWNT.WESAT2)  
HNKER TRANSITION (HNKER.WESAT2)  
MDANO TRANSITION (MDANO.WESAT2)  
TURKI TRANSITION (TURKI.WESAT2)

From MOTZA on track 132° to WESAT, then on track 130°. Expect RADAR vectors to final approach course.

NOTE: Chart not to scale.

SC-2, 22 FEB 2024 to 21 MAR 2024

SC-2, 22 FEB 2024 to 21 MAR 2024

# WESAT TWO ARRIVAL (RNAV)

(MOTZA.WESAT2) 25JUN15

DALLAS-FORT WORTH, TEXAS