

(KZLOV1.WINNZ) 22195

KZLOV ONE DEPARTURE (RNAV)

AL-467 (FAA)

WILLOW RUN (YIP)

DETROIT, MICHIGAN

EC-1, 22 FEB 2024 to 21 MAR 2024

**TOP ALTITUDE:
ASSIGNED BY ATC**

RNAV 1 - DME/DME/IRU or GPS.

RADAR required.

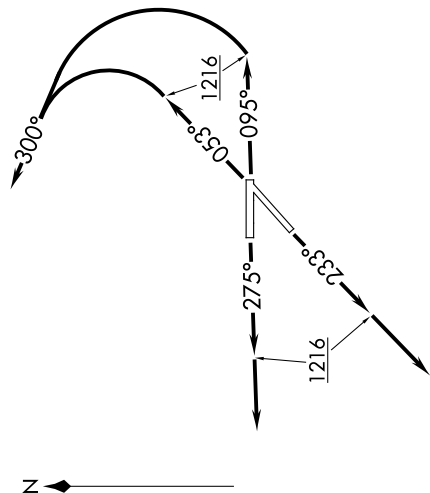
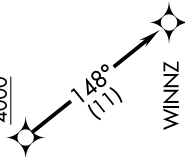
ATIS 127.425
 GND CON 119.975
 WILLOW RUN TOWER 125.275 256.9
 DETROIT DEP CON 118.95 284.0

NOTE: Turbojet departures at/above 10000, maintain 280K until advised by ATC.
 NOTE: If unable initial 500' per NM climb rate, advise clearance delivery on initial contact.
 NOTE: For use by Cleveland terminal arrivals only.

TAKEOFF MINIMUMS:

Rwy 5L/R, 9, 23L/R, 27: Standard with minimum climb of 500' per NM to 1216.

KZLOV
 10000
 4000



NOTE: Chart not to scale.

DEPARTURE ROUTE DESCRIPTION

TAKEOFF RUNWAYS 5: Climb on heading 053° to 1216, then on heading 300° or as assigned for RADAR vectors to cross KZLOV at or above 4000 and at or below 10000, thence....
TAKEOFF RUNWAY 9: Climb on heading 095° to 1216, then on heading 300° or as assigned for RADAR vectors to cross KZLOV at or above 4000 and at or below 10000, thence....
TAKEOFF RUNWAYS 23: Climb on heading 233° to 1216, then on heading 233° or as assigned for RADAR vectors to cross KZLOV at or above 4000 and at or below 10000, thence....
TAKEOFF RUNWAY 27: Climb on heading 275° to 1216, then on heading 275° or as assigned for RADAR vectors to cross KZLOV at or above 4000 and at or below 10000, thence....

....on track 148° to WINNZ. Maintain assigned altitude, expect filed altitude ten minutes after departure.

KZLOV ONE DEPARTURE (RNAV)

(KZLOV1.WINNZ) 14JUL22

DETROIT, MICHIGAN

WILLOW RUN (YIP)

EC-1, 22 FEB 2024 to 21 MAR 2024